



4'x8' Firewood Shed Plan

Compare our Free vs. Premium plan

This perfectly designed plan will guide you through the entire process of building your very own shed for any backyard or garden.



Check out the benefits you would get with our **premium edition**:

Features	Free plan	Premium edition
Steps count	10	16
Illustrations for Each Step	✓	✓
Print Ready	✓	✓
Step By Step Instructions	✓	✓
Full Materials and Cuttings List	✗	✓
Additional Illustrations	✗	✓
Additional Blueprints	✗	✓
Tools List	✗	✓
Fastening Elements List	✗	✓
Technical Support	✗	✓

BUY NOW

4'x8' firewood shed materials list

Bottom Frame

- Pressure-Treated Lumber
- Plywood

Wall Frames

- Pressure-Treated Lumber

Shed's Roof

- Pressure-Treated Lumber
- Pressure-Treated Board
- Plywood
- Building paper
- Asphalt shingles
- Metal drip edge

Walls Exterior Siding

- Pressure-Treated Lumber
- Wood siding boards

Top Frame

- Pressure-Treated Lumber

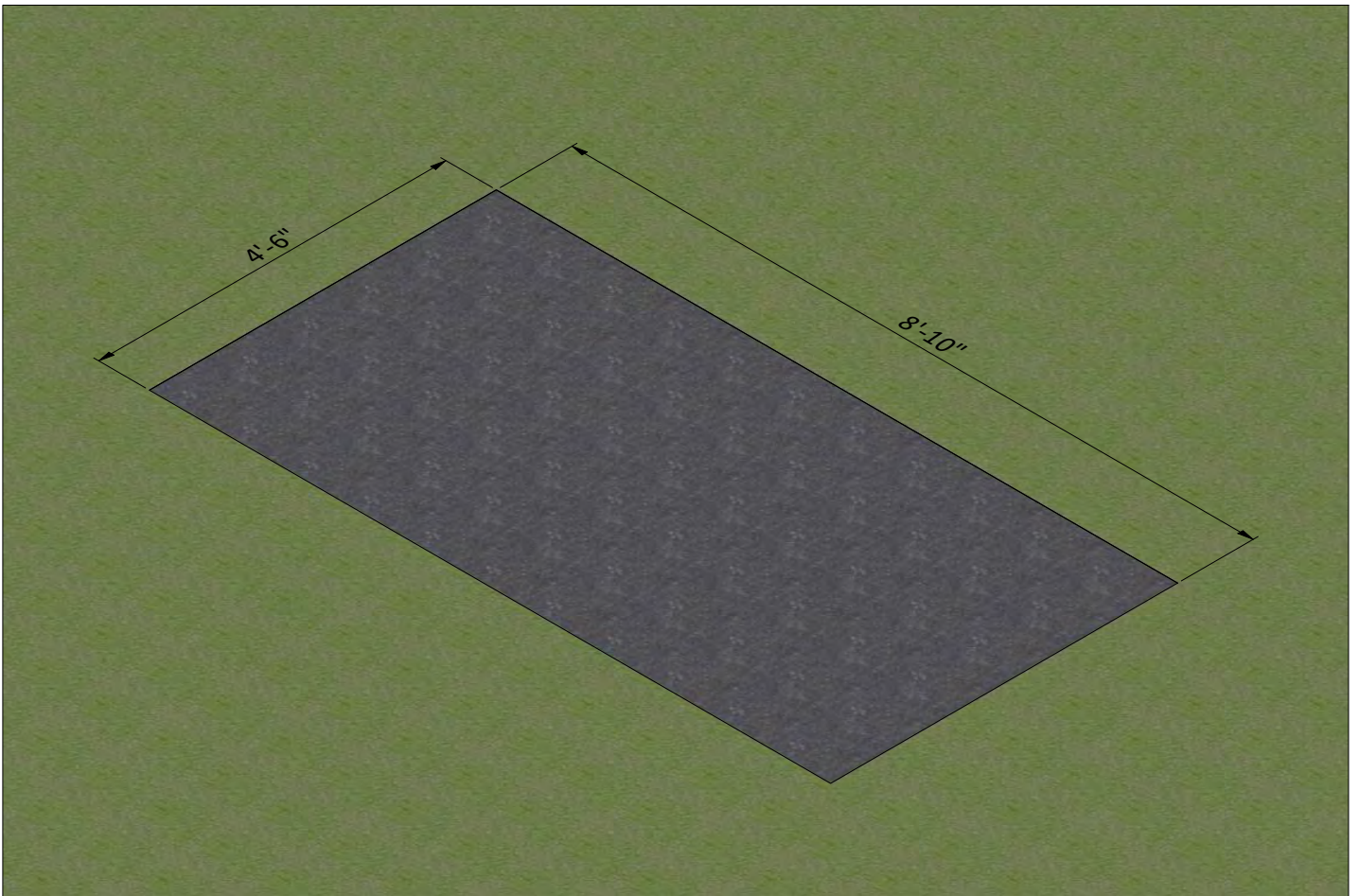
Fasteners & Hardware

- Galvanized nails
- Wood screws

STEP 1

Ground Works

1.1 Clear the area where you want to build the shed and layout for the foundation. Use the below illustration as a guide.



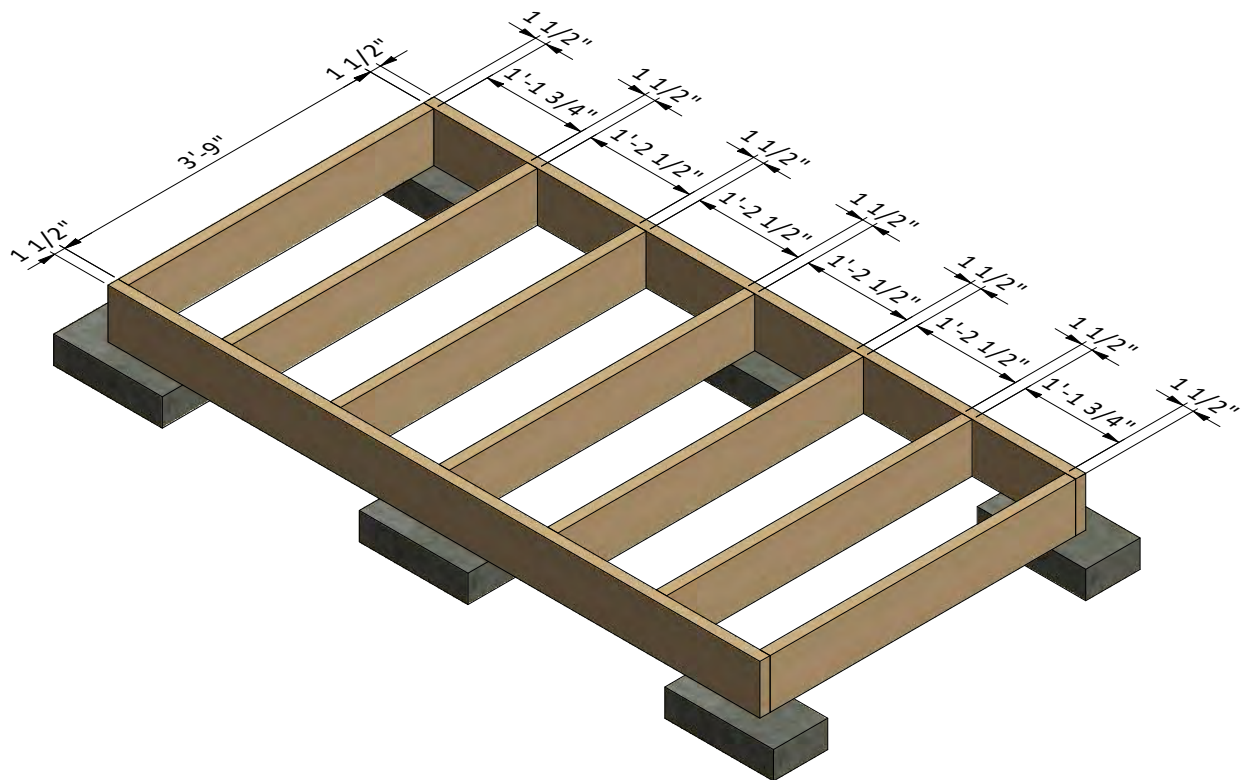
STEP 2

Framing the Floor

2.1 Assemble the frame using $1\frac{1}{2}$ " x $7\frac{1}{4}$ " pressure-treated lumber. You will need five boards cut to 3'-9" that will be the joist.

2.2 Secure the beams with 8x5" wood screws.

2.3 Using a speed square or carpenter's square, check the corners to make sure they are 90°.



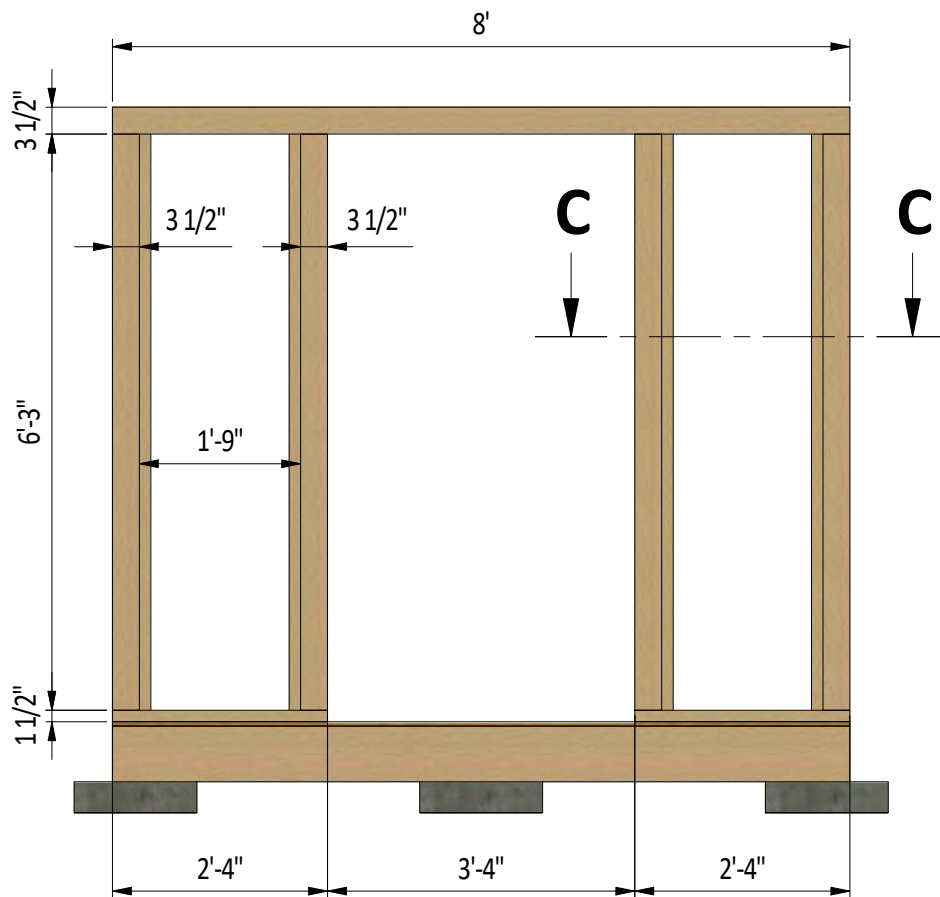
STEP 3

Assemble Front Wall Frame

3.1 Using 1 1/2" x 1 1/2", 1 1/2" x 3 1/2" and 3 1/2" x 3 1/2" pressure-treated lumber, construct front wall frame using the drawing below as a reference. You will need eight boards cut to 6'-3" that will be studs, two boards cut to 2'-4" that will be the bottom beam, one board cut to 8' that will be the top beam.

3.2 Connect the beams with 2x3" and 2x5" wood screws.

3.3 Using a speed square or carpenter's square, check the corners to make sure they are 90°.



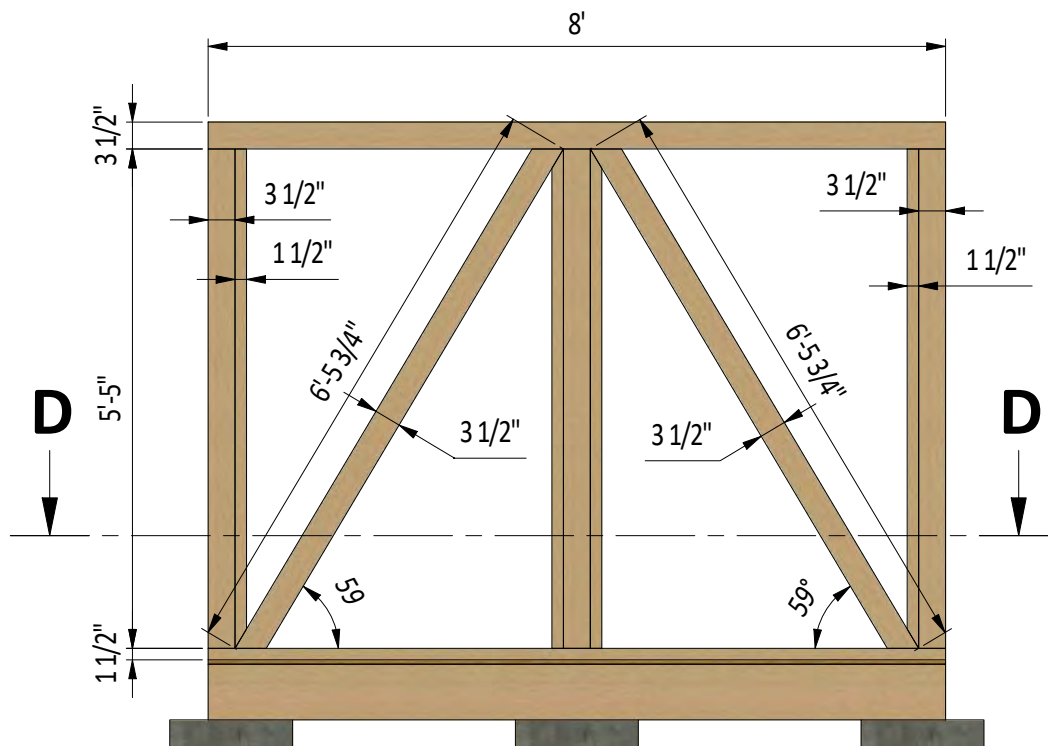
STEP 4

Assemble Back Wall Frame

4.1 Using 1 1/2" x 1 1/2", 1 1/2" x 3 1/2" and 3 1/2" x 3 1/2" pressure-treated lumber, construct back wall frame using the drawing below as a reference. You will need seven boards cut to 5'-5" that will be the studs, two boards cut to 8' that will be the top and bottom plates and two boards cut to 6'-5 3/4" that will be diagonal braces.

4.2 Connect the beams with 2x3" and 2x5" wood screws.

4.3 Using a speed square or carpenter's square, check the corners to make sure they are 90°.



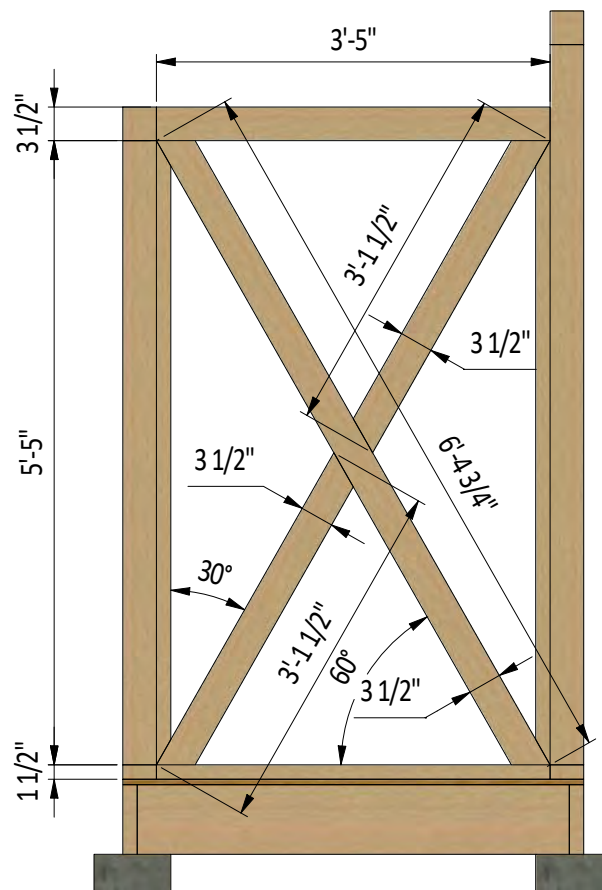
STEP 5

Assemble Side Wall Frame

5.1 Using $1\frac{1}{2}" \times 1\frac{1}{2}"$, $1\frac{1}{2}" \times 3\frac{1}{2}"$ and $3\frac{1}{2}" \times 3\frac{1}{2}"$ pressure-treated lumber, construct side wall frame using the drawing below as a reference. You will need two boards cut to 5'-5" that will be the studs, two boards cut to 3'-5" that will be the top and bottom plates, one board cut to 6'-4 $\frac{3}{4}"$ and two boards cut to 3'-1 $\frac{1}{2}"$ that will be diagonal braces.

5.2 Connect the beams with 2x3" and 2x5" wood screws.

5.3 Using a speed square or carpenter's square, check the corners to make sure they are 90°.

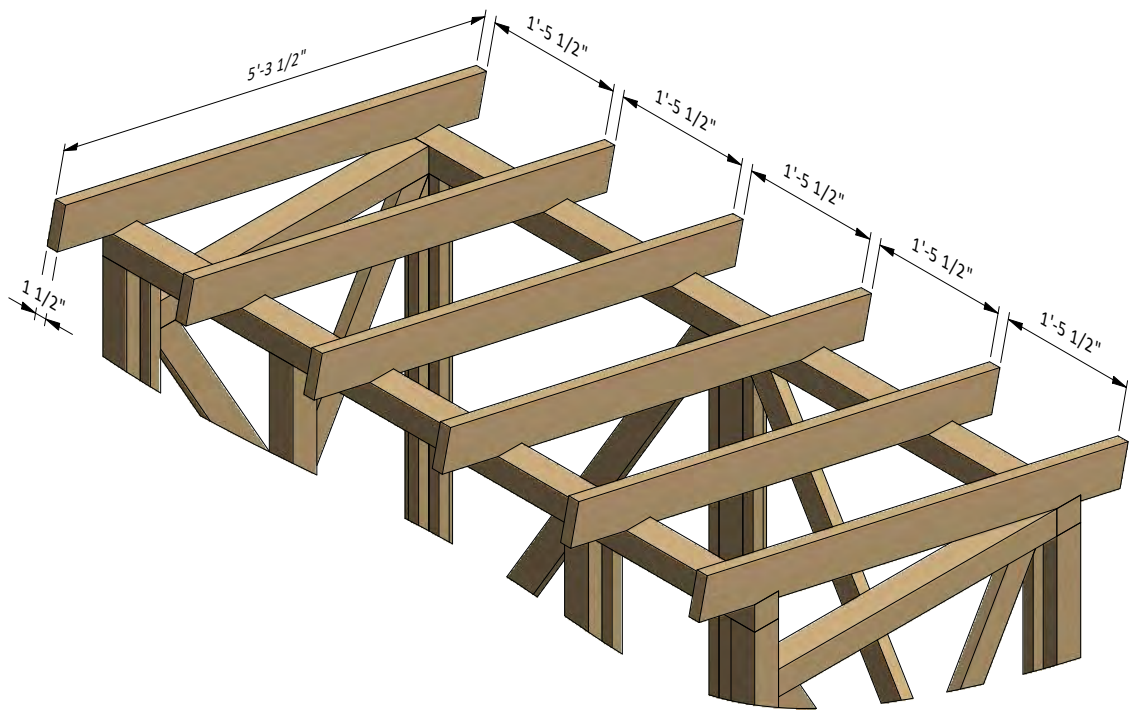


STEP 6

Assemble The Roof Frame

6.1 Using 1 1/2" x 5 1/2" pressure-treated lumber, cut six rafters 5'-3 1/2" long according to the dimensions in drawing below. Cut the recesses in each beam for splicing connection with wall frames.

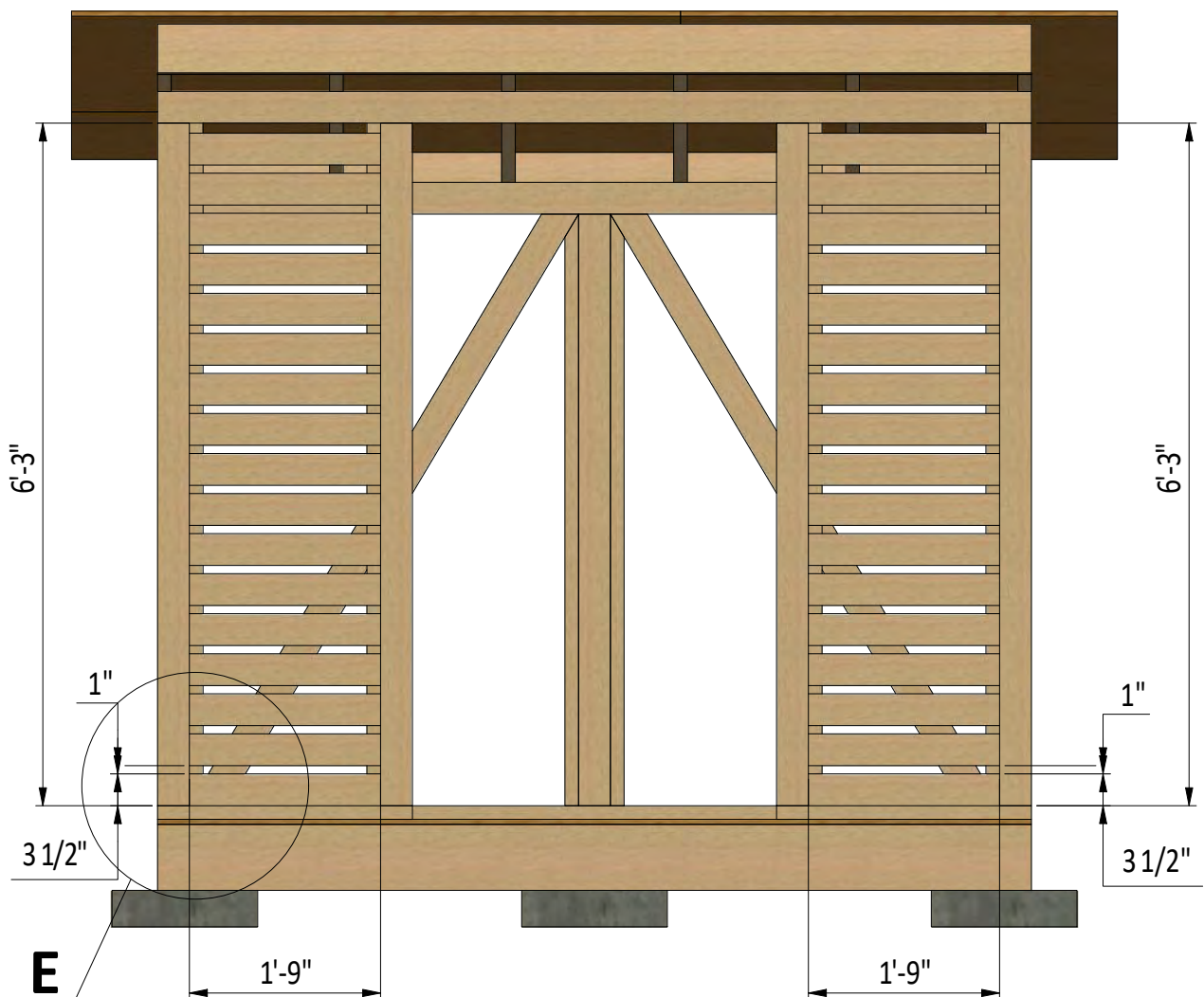
6.2 Connect the beams with a top frame with the help of 5" wood screws.



STEP 7

Installing the Exterior Siding to the Front Wall

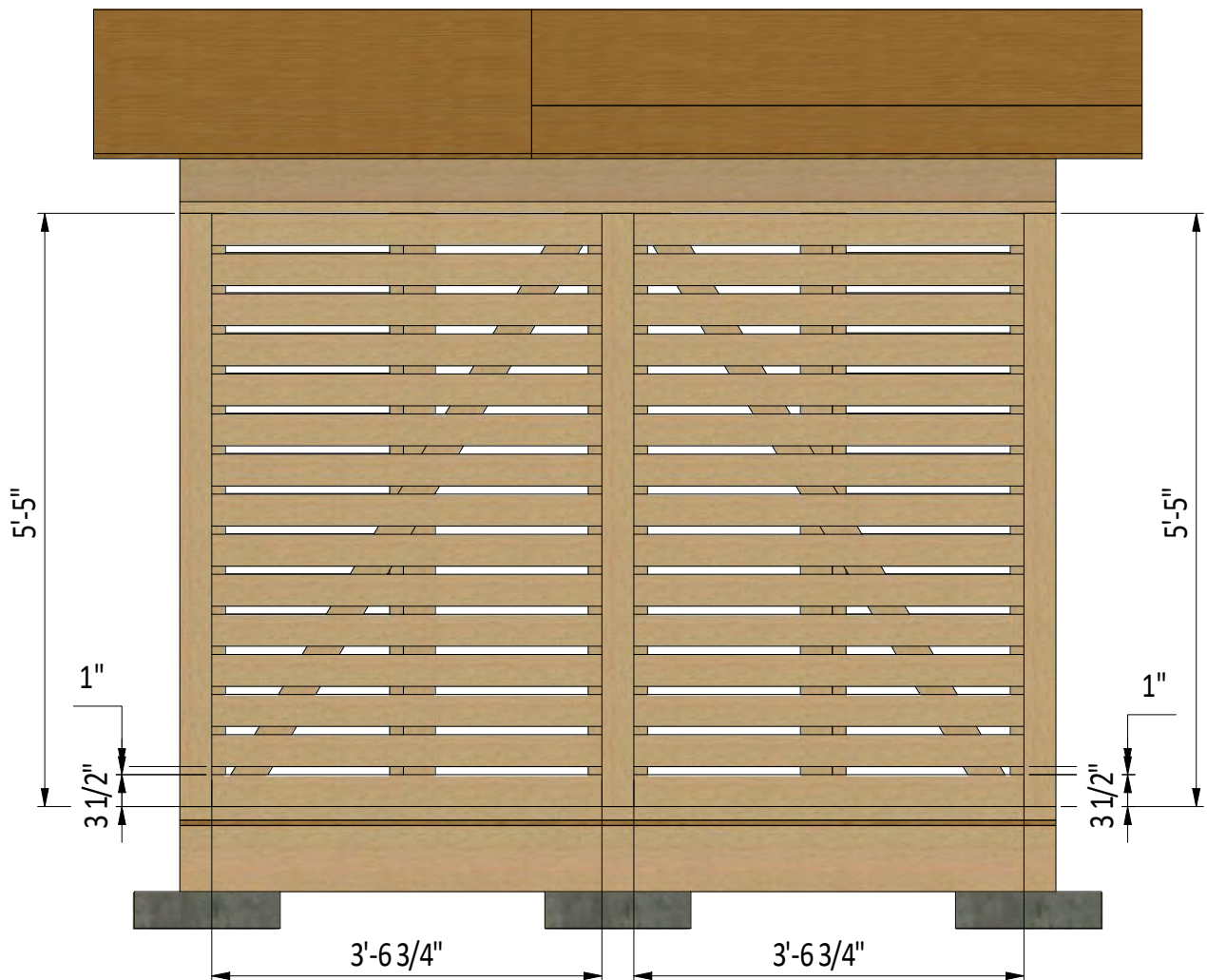
7.1 Use 3/4" x 3 1/2" pressure-treated lumber to cut and install the wall siding. Use the illustration below as a reference. You will need to cut thirty four boards to 1'-9" and install them in increments of 1 inch from both sides.



STEP 8

Installing the Exterior Siding to the Back Wall

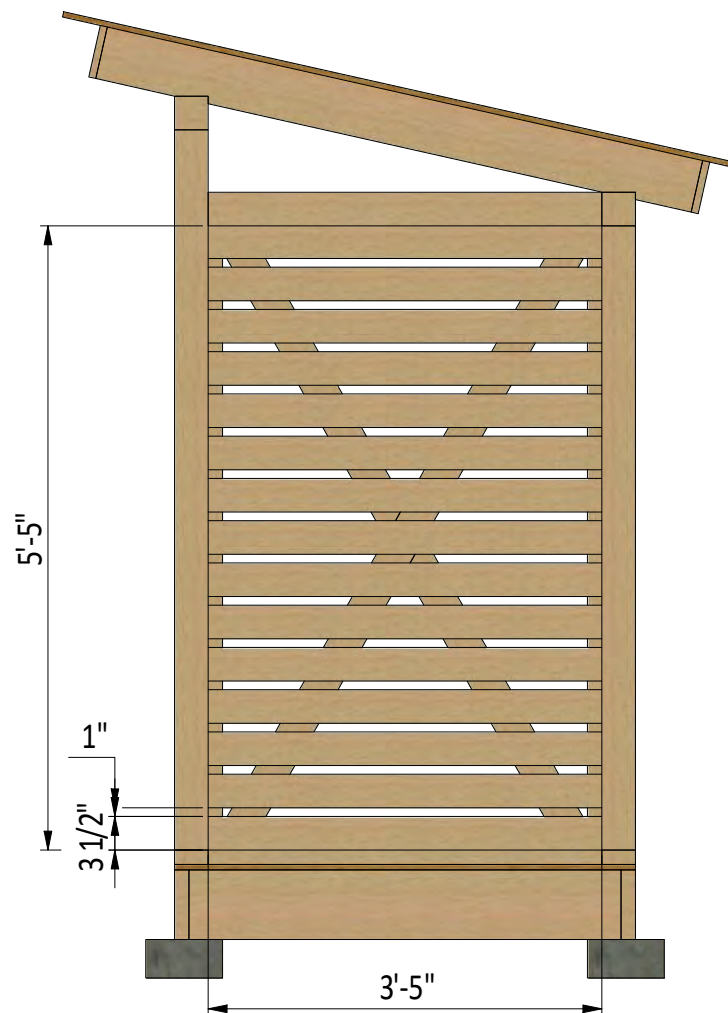
8.1 Use 3/4" x 3 1/2" pressure-treated lumber to cut and install the wall siding. Use the illustration below as a reference. You will need to cut thirty boards to 3'-6 3/4" and install them from both sides in increments of 1 inch.



STEP 9

Installing the Exterior Siding to the Side Walls

9.1 Use 3/4" x 3 1/2" pressure-treated lumber to cut and install the wall siding. Use the illustration below as a reference. You will need to cut fifteen boards to 3'-5" and install them in increments of 1 inch.



STEP 10

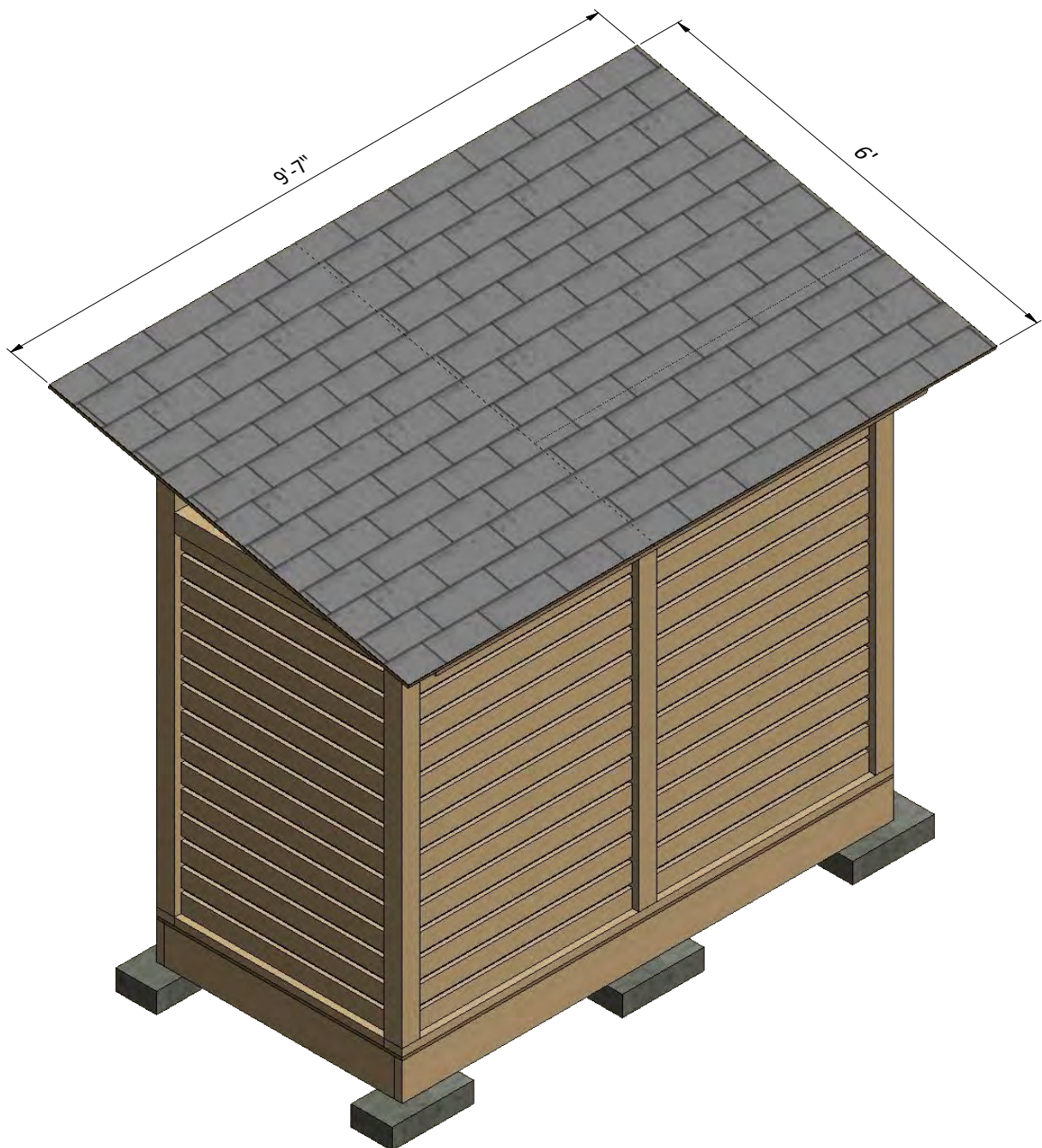
Roof Sheathing Installation

10.1 You will need 60 Sq Ft of asphalt shingle roofing.

10.2 Add the metal drip edge to the fascias.

10.3 Cover the plywood with building paper.

10.4 Install asphalt shingle roofing using an industrial stapler.



Compare our Free vs. Premium plan

This perfectly designed plan will guide you through the entire process of building your very own shed for any backyard or garden.



Check out the benefits you would get with our **premium edition**:

Features	Free plan	Premium edition
Steps count	10	16
Illustrations for Each Step	✓	✓
Print Ready	✓	✓
Step By Step Instructions	✓	✓
Full Materials and Cuttings List	✗	✓
Additional Illustrations	✗	✓
Additional Blueprints	✗	✓
Tools List	✗	✓
Fastening Elements List	✗	✓
Technical Support	✗	✓

BUY NOW



For more great **HOW-TO** plans please visit: <https://shedplans.org>

Copyright

The text and illustrations that appear here are the exclusive property of shedplans.org and are protected by federal copyright laws. The duplication, sale or distribution of any portion of these plans without prior written consent from the original designer will be subject to the appropriate penalties for copyright infringement. Sharing this plan on the web is only permitted with an indicated original source: <https://shedplans.org>