



Free 24'x24' Garage Plan



Compare our Free vs. Premium plan

This perfectly designed plan will guide you through the entire process of building your very own shed for any backyard or garden.



Check out the benefits you would get with our **premium edition**:

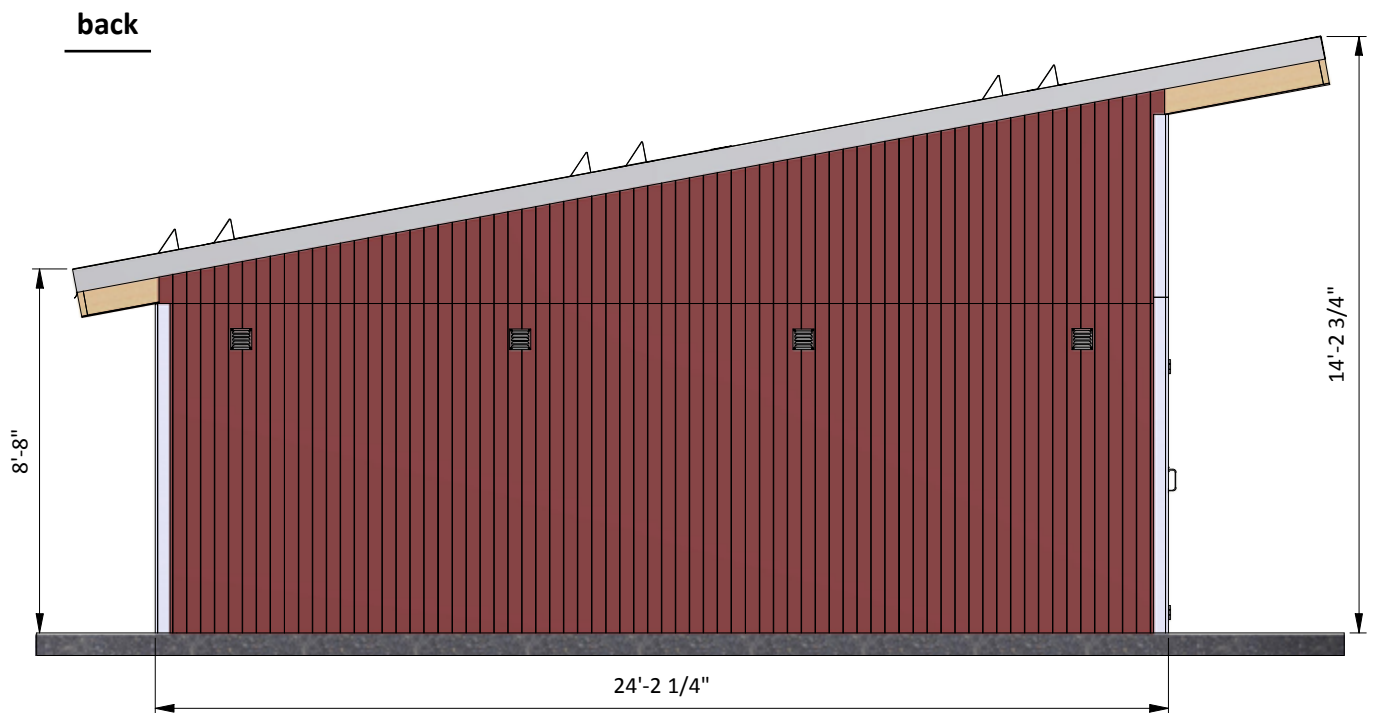
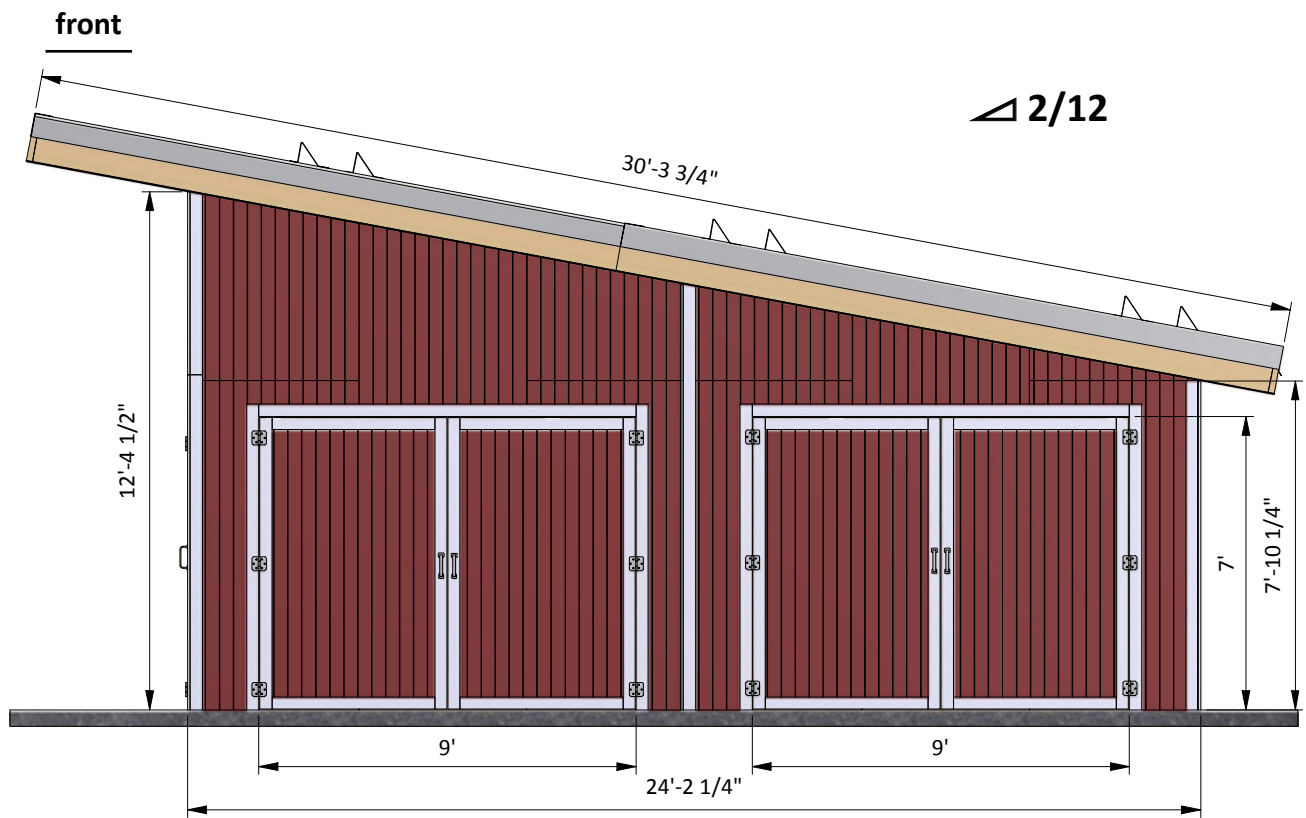
Features	Free plan	Premium edition
Steps count	11	17
Illustrations for Each Step	✓	✓
Print Ready	✓	✓
Step By Step Instructions	✓	✓
Full Materials and Cuttings List	✗	✓
Additional Illustrations	✗	✓
Additional Blueprints	✗	✓
Tools List	✗	✓
Fastening Elements List	✗	✓
Technical Support	✗	✓

BUY NOW

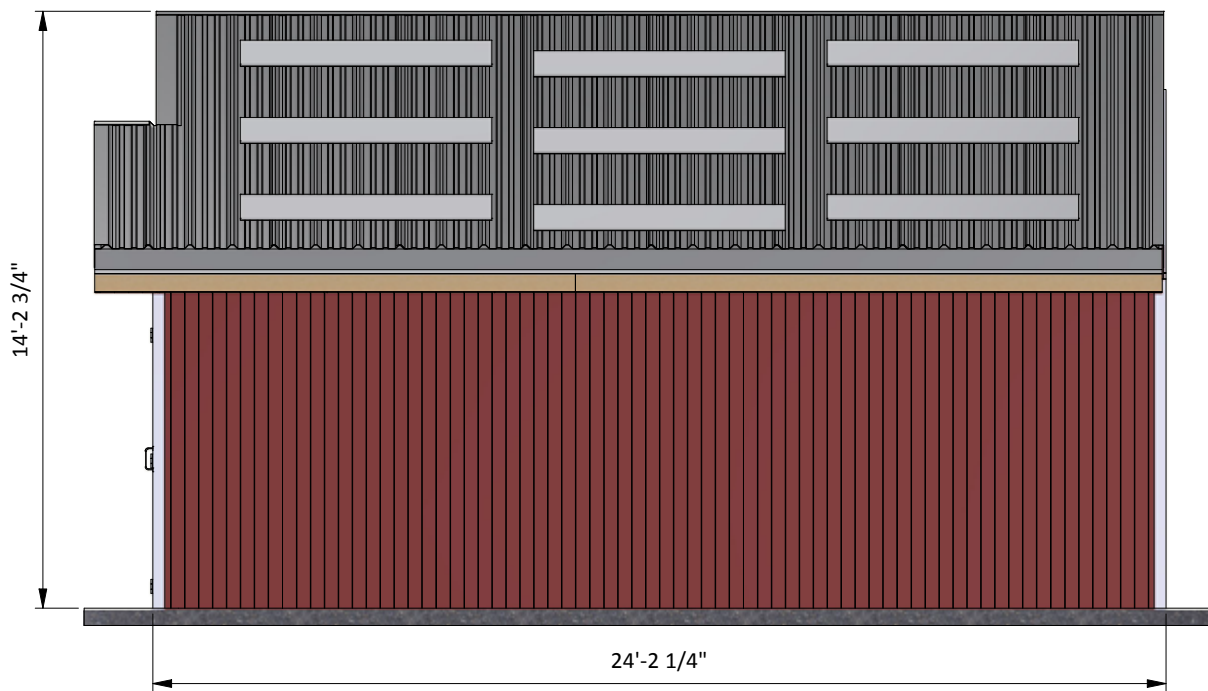
24'x24' Garage shopping list

Item	Unit	Qty	Size
Lumber (1 x 4)	pcs	16	8'
Lumber (1 x 4)	pcs	2	10'
Lumber (1 x 4)	pcs	2	12'
Lumber (2 x 2)	pcs	1	6'
Lumber (2 x 2)	pcs	1'	8'
Lumber (2 x 4)	pcs	1	6'
Lumber (2 x 4)	pcs	3	8'
Lumber (2 x 6)	pcs	2	6'
Lumber (2 x 6)	pcs	110	8'
Lumber (2 x 6)	pcs	13	10'
Lumber (2 x 6)	pcs	33	12'
LVL (2x12)	pcs	10	12'

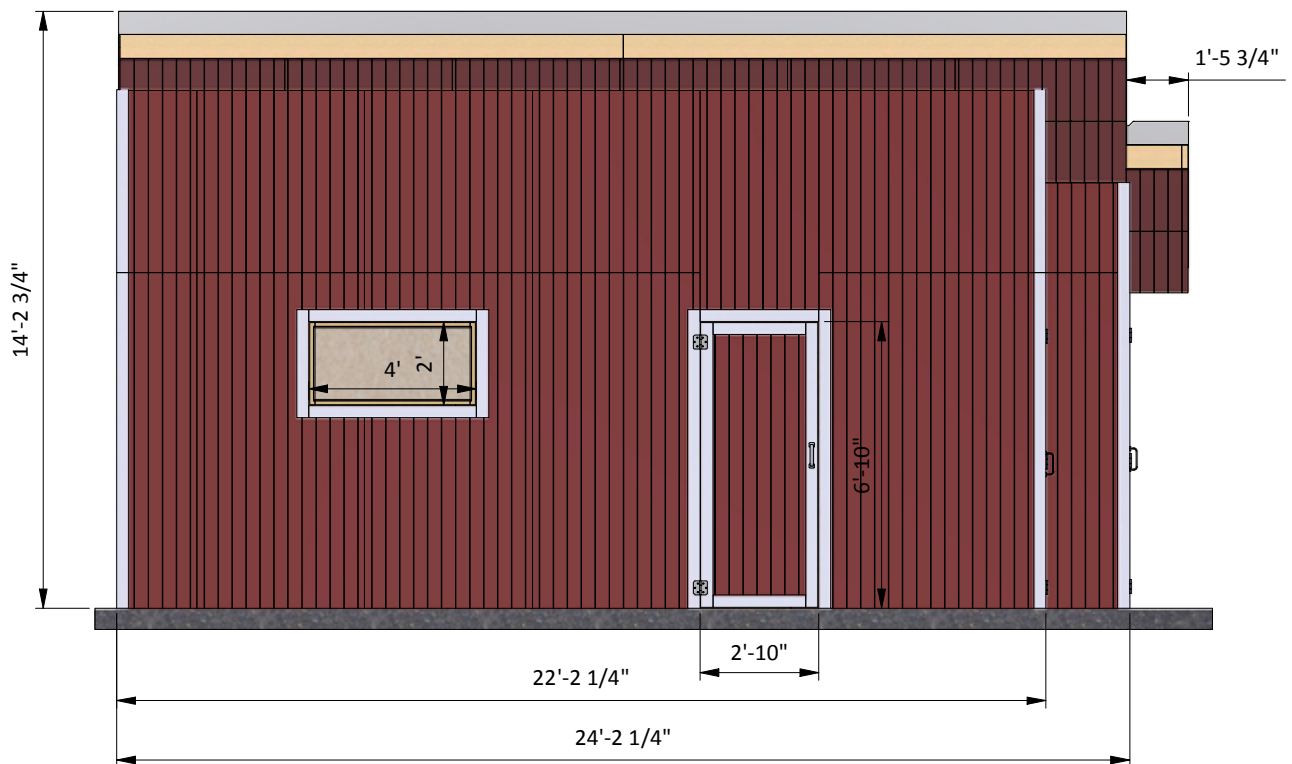
Size & Dimensions



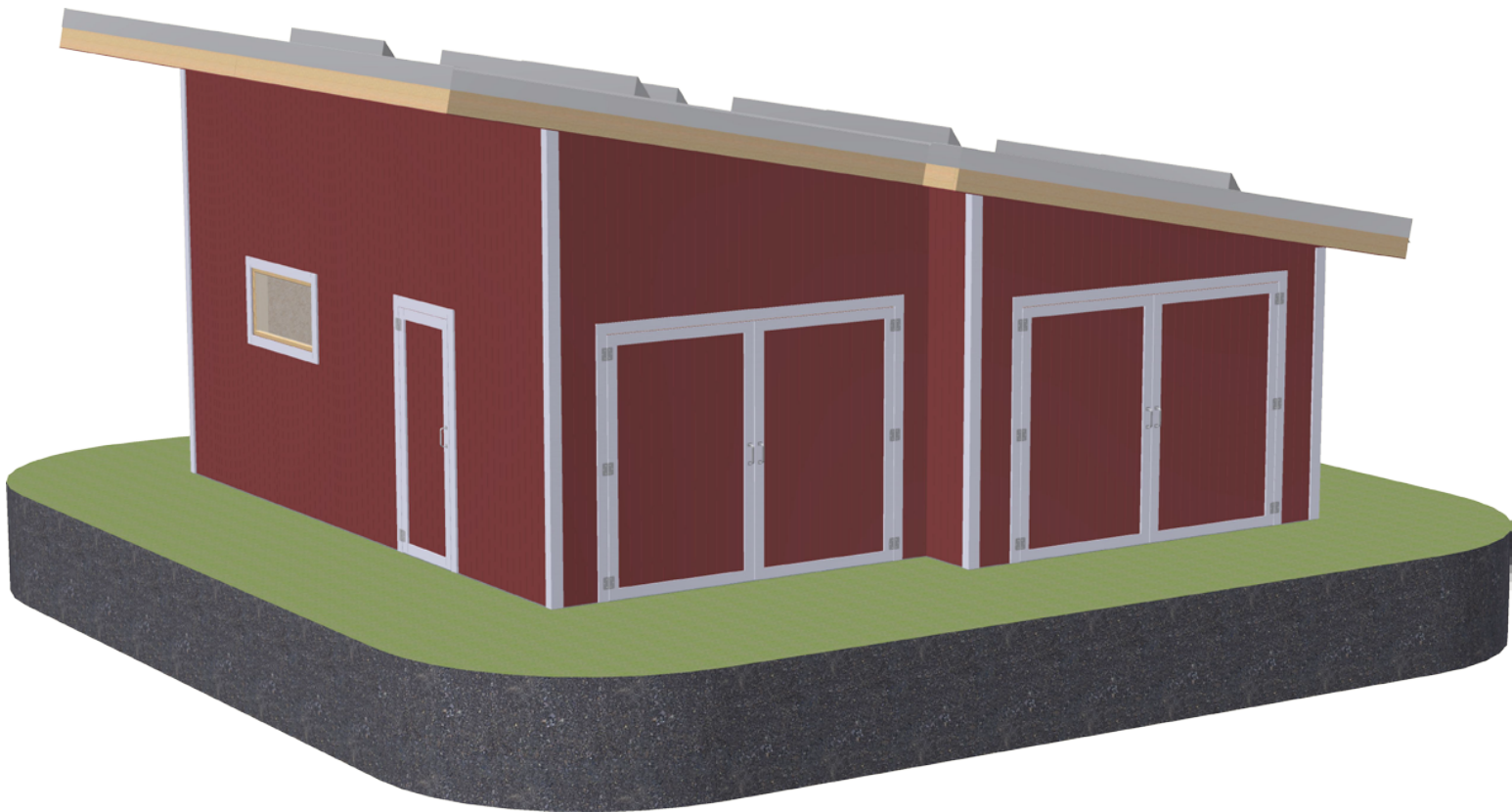
right



left



Exterior view



STEP 1

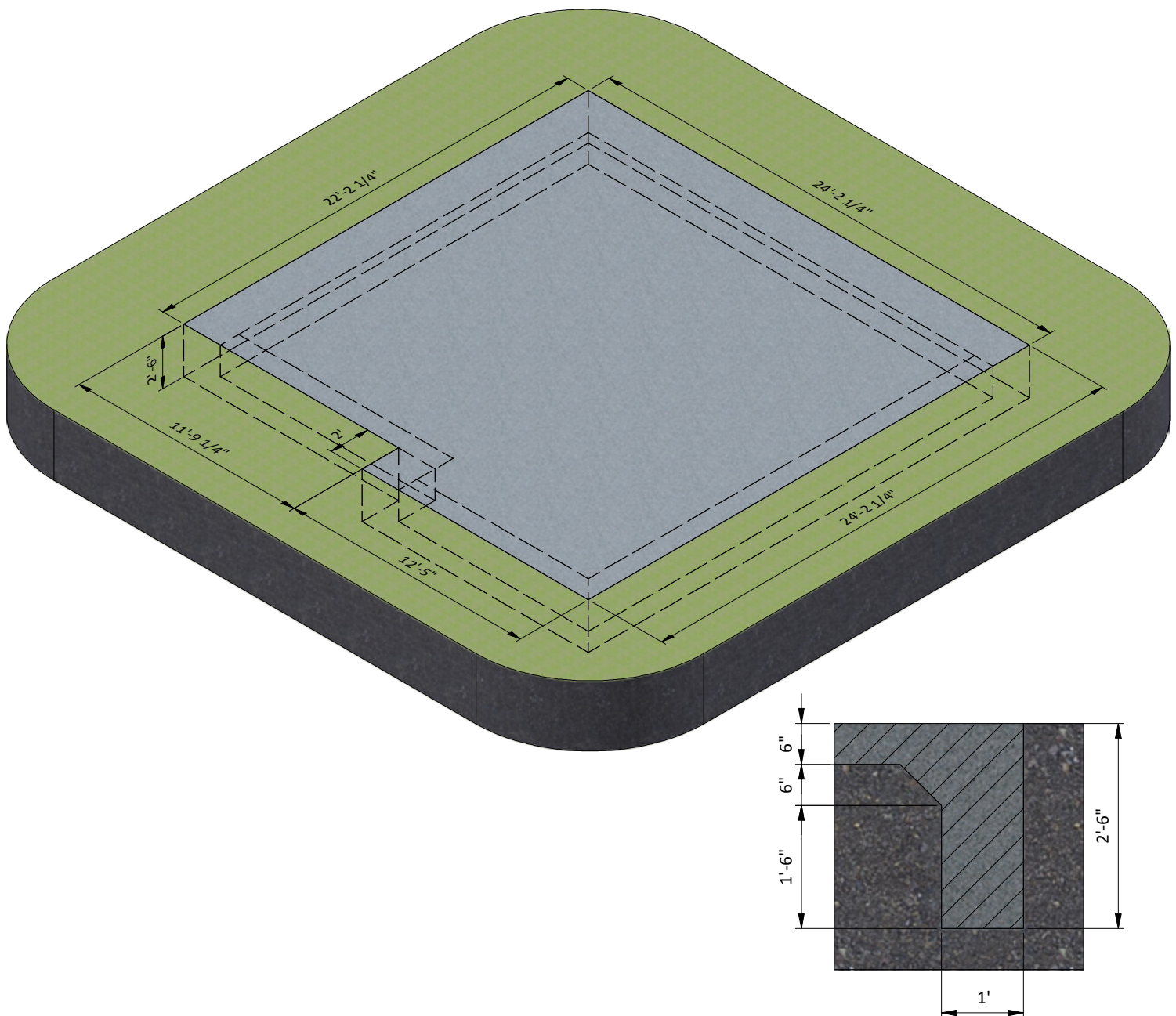
Foundation Preparation

1.1 Clear the area where you want to build the garage and layout for the foundation. Use the illustration below as a guide.

1.2 For the foundation, dig the trenches at least 1' wide and 2' deep (use your local frost depth requirement if it's need to be deeper). Take off 6 inches of soil in the middle.

1.3 To reinforce the concrete slab, place number 4 reinforcement at 16 inch spacing and tie with binding wire at the intersection points of the resulting reinforcement mesh.

1.4 Fill the trenches to ground level with concrete and let cure, or harden. Since curing times vary between brands, read the packaging for recommended curing times.



STEP 2

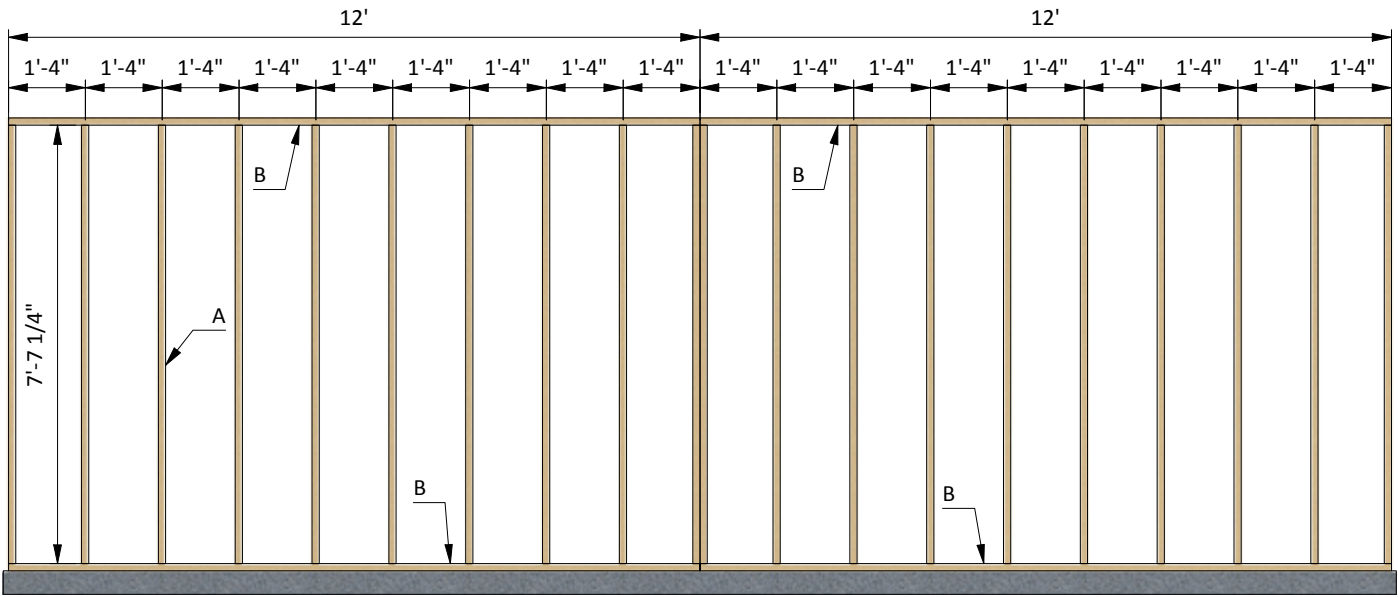
Assemble Right Wall Frame

2.1 Using 2x6 lumber, construct wall frame using the drawing below as a reference. It is divided into two parts for easy assembly. You will need to prepare beams in necessary quantity according to the cutting list below.

2.2 Connect the beams with 3" wood screws.

2.3 Using a speed square or carpenter's square, check the corners to make sure they are 90°.

Pos	Descriptio	Material	Dimension	Qty
A	Stud	2x6	7'-7 1/4"	20
B	Top/bottom beam	2x6	12'	4



STEP 3

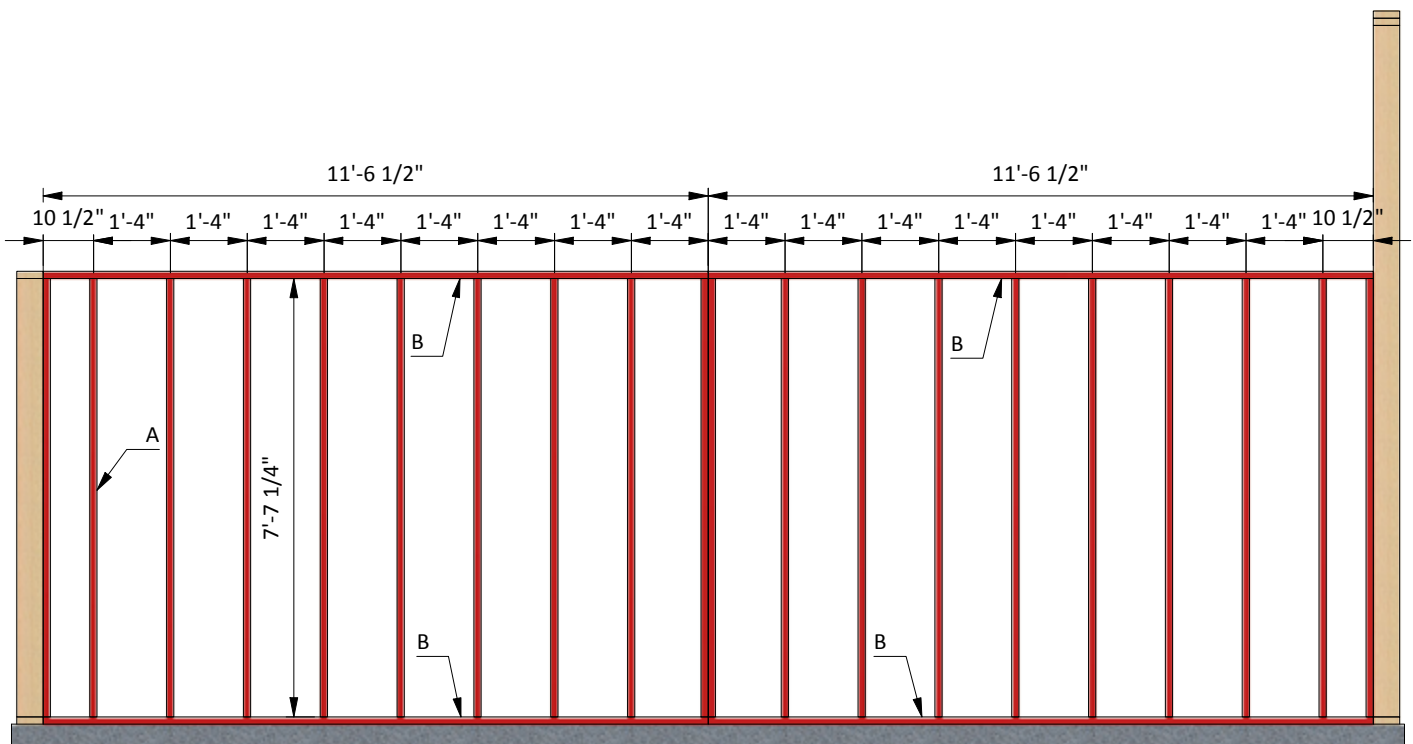
Assemble Back Wall Frame

3.1 Using 2x6 lumber, construct back wall frame using the drawing below as a reference. You will need to prepare beams in necessary quantity according to the cutting list below.

3.2 Connect the beams with 3" wood screws.

3.3 Using a speed square or carpenter's square, check the corners to make sure they are 90°.

Pos	Descriptio	Material	Dimension	Qty
A	Stud	2x6	7'-7 1/4"	20
B	Top/bottom beam	2x6	11'-6 1/2"	4



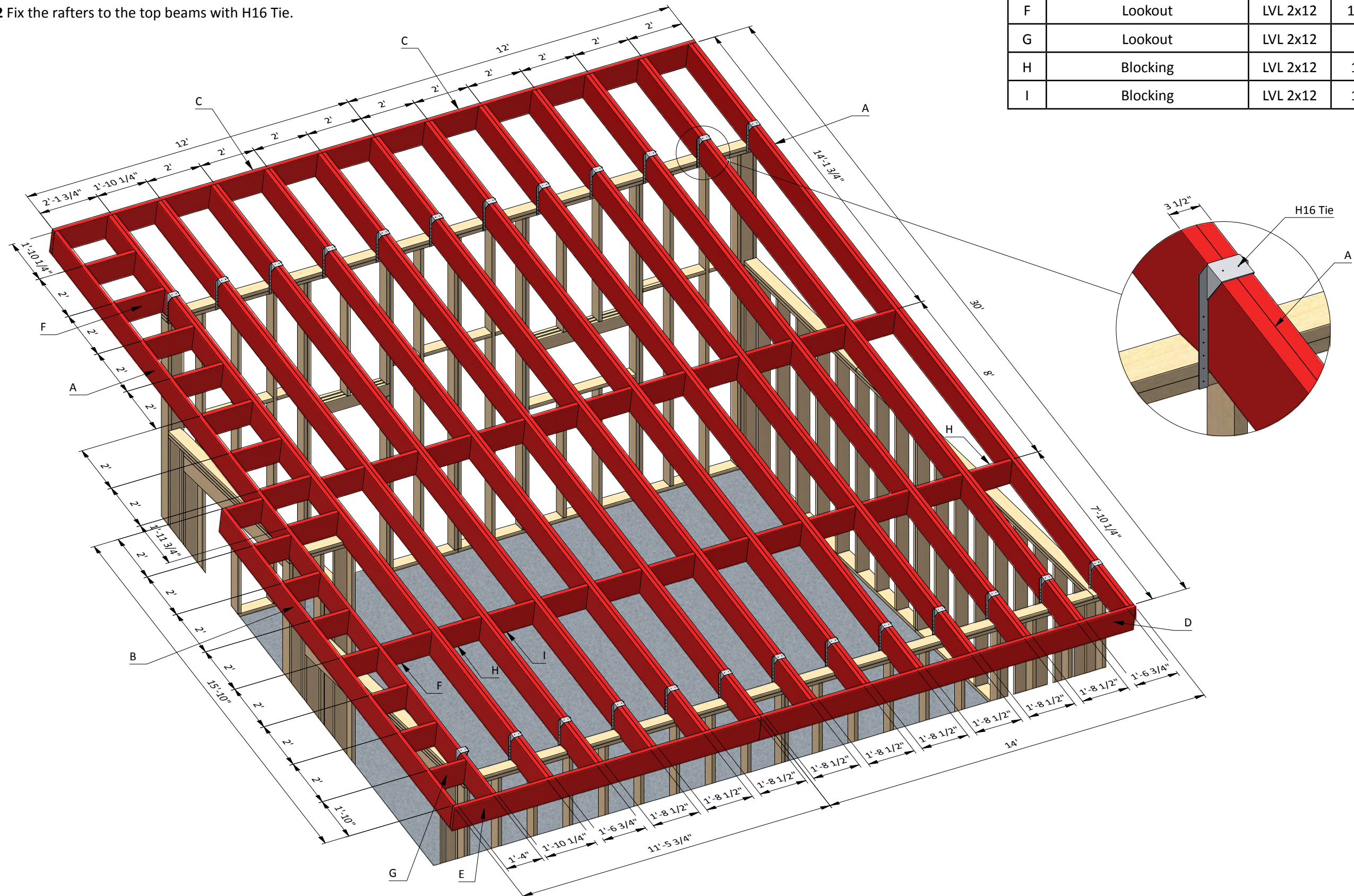
STEP 4

Assemble the Roof Frame

4.1 Using LVL 2x12 beams prepare rafters, outlooks and fascias according to the drawing and cutting list below. Connect rafters with blocking boards.

4.2 Fix the rafters to the top beams with H16 Tie.

Pos	Descriptio	Material	Dimension	Qty
A	Rafters	LVL 2x12	30'	25
B	Overhang rafter	LVL 2x12	15'-10"	1
C	Fascia	LVL 2x12	12'	2
D	Fascia	LVL 2x12	14'	1
E	Fascia	LVL 2x12	11'-5 3/4"	1
F	Lookout	LVL 2x12	1'-10 1/4"	9
G	Lookout	LVL 2x12	1'-4"	8
H	Blocking	LVL 2x12	1'-6 3/4"	4
I	Blocking	LVL 2x12	1'-8 1/2"	18



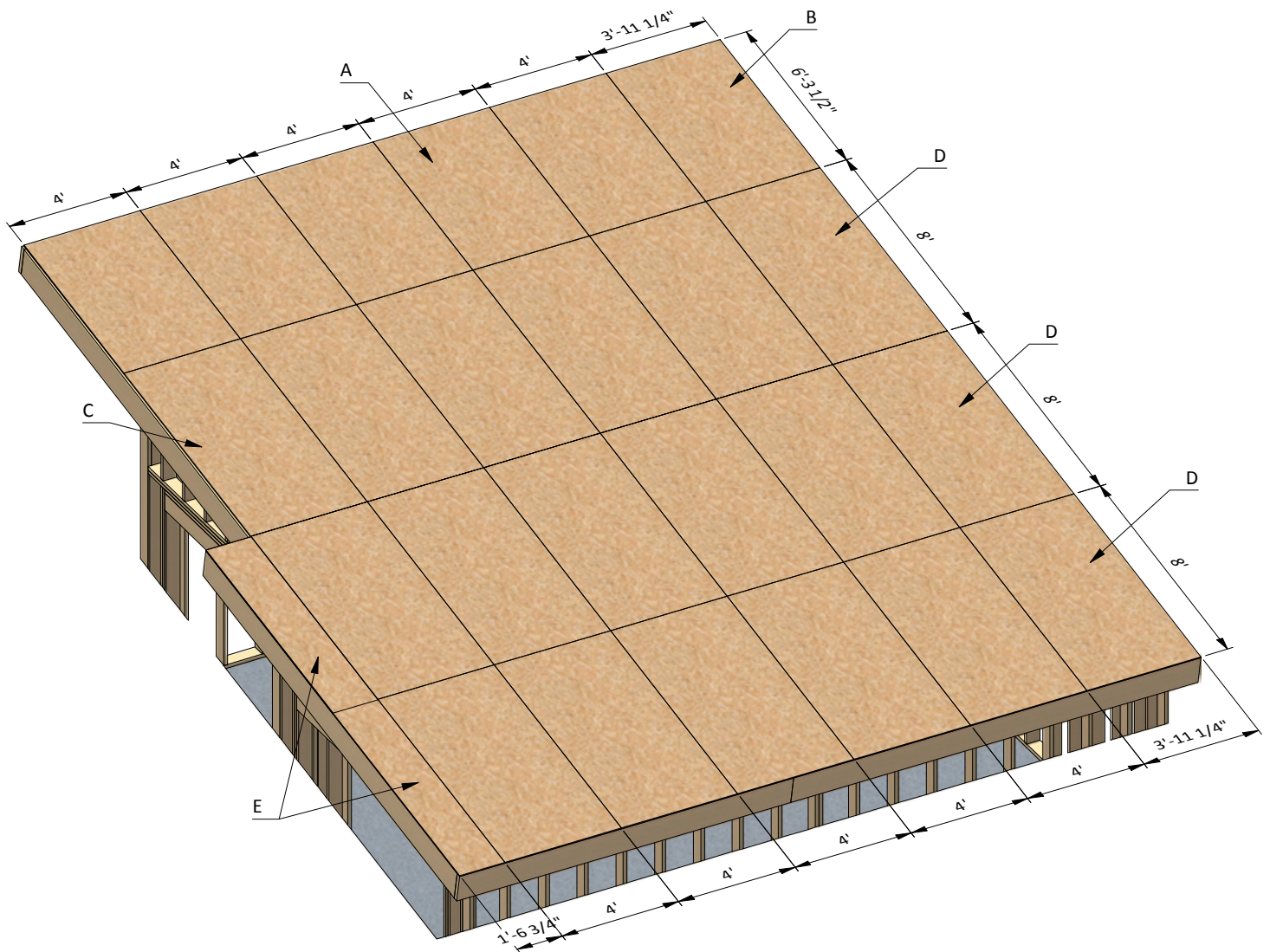
STEP 5

Install OSB for the Roof

5.1 Cut sheets of 1/2" OSB for the roof sheathing using the drawing below as a guide. You will need to prepare sheets in necessary quantity according to the cutting list below.

5.2 Secure the OSB with 2" wood screws.

Pos	Descriptio	Material	Dimension	Qty
A	Roof sheathing	1/2" OSB	4' x 6'-3 1/2"	5
B	Roof sheathing	1/2" OSB	3'-11 1/4" x 6'-3 1/2"	1
C	Roof sheathing	1/2" OSB	4' x 8'	15
D	Roof sheathing	1/2" OSB	3'-11 1/4" x 8'	3
E	Roof sheathing	1/2" OSB	1'-6 3/4" x 8'	2



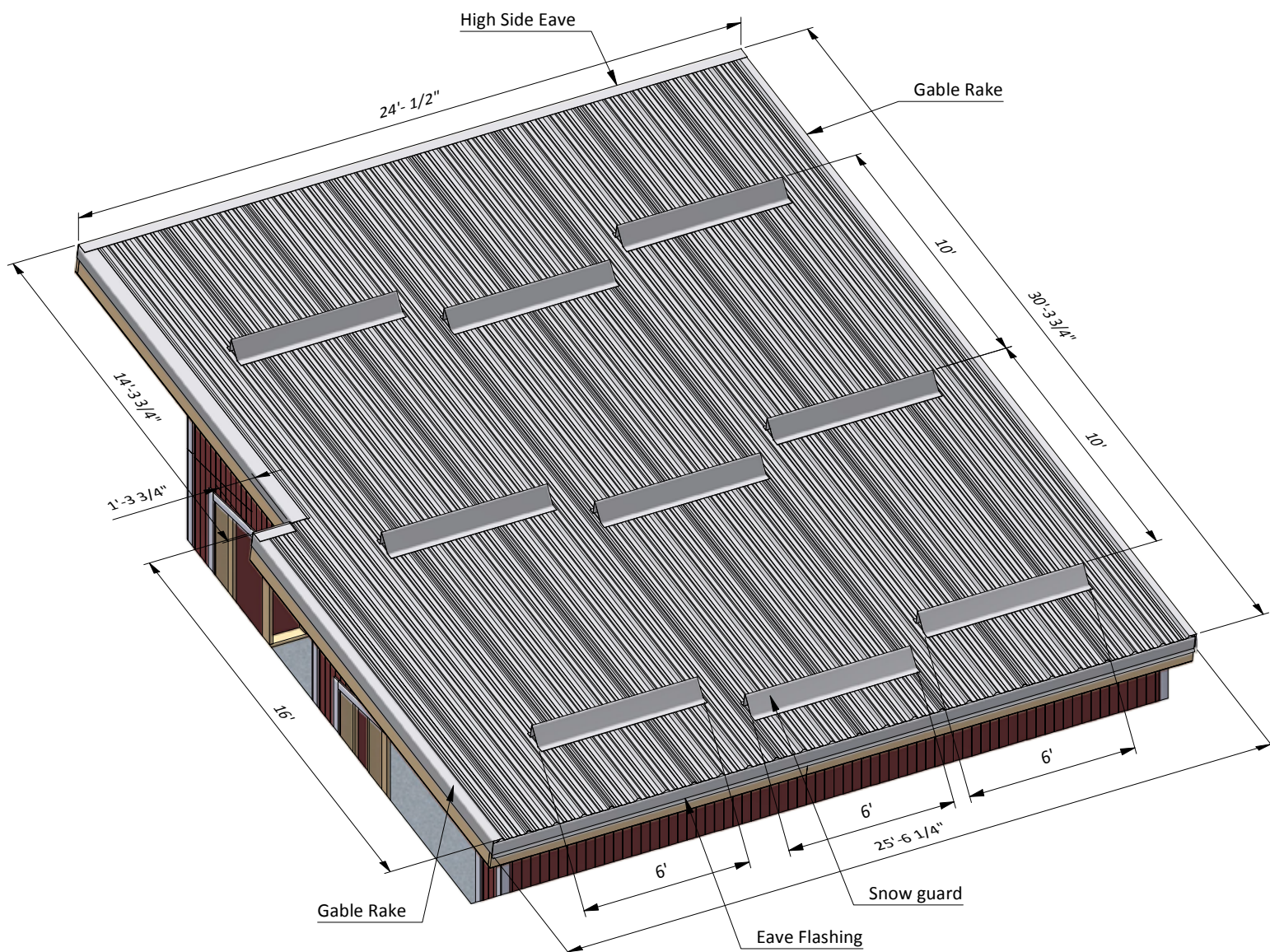
STEP 6

Garage Roof Sheathing Installation

6.1 Cover the OSB roof plane with 30 Felt Roofing Underlayment. Assemble the corrugated metal roof panels, you will need 750 square feet.

6.2 Install eave flashings and gable rakes to cover the roof edges according to the nodes below.

6.3 Secure all elements with 9 x 1-1/2" and 9 x 2 1/2" screws.



STEP 7

Assemble and Install Garage Front Doors

You will need to assemble two mirrored double doors.

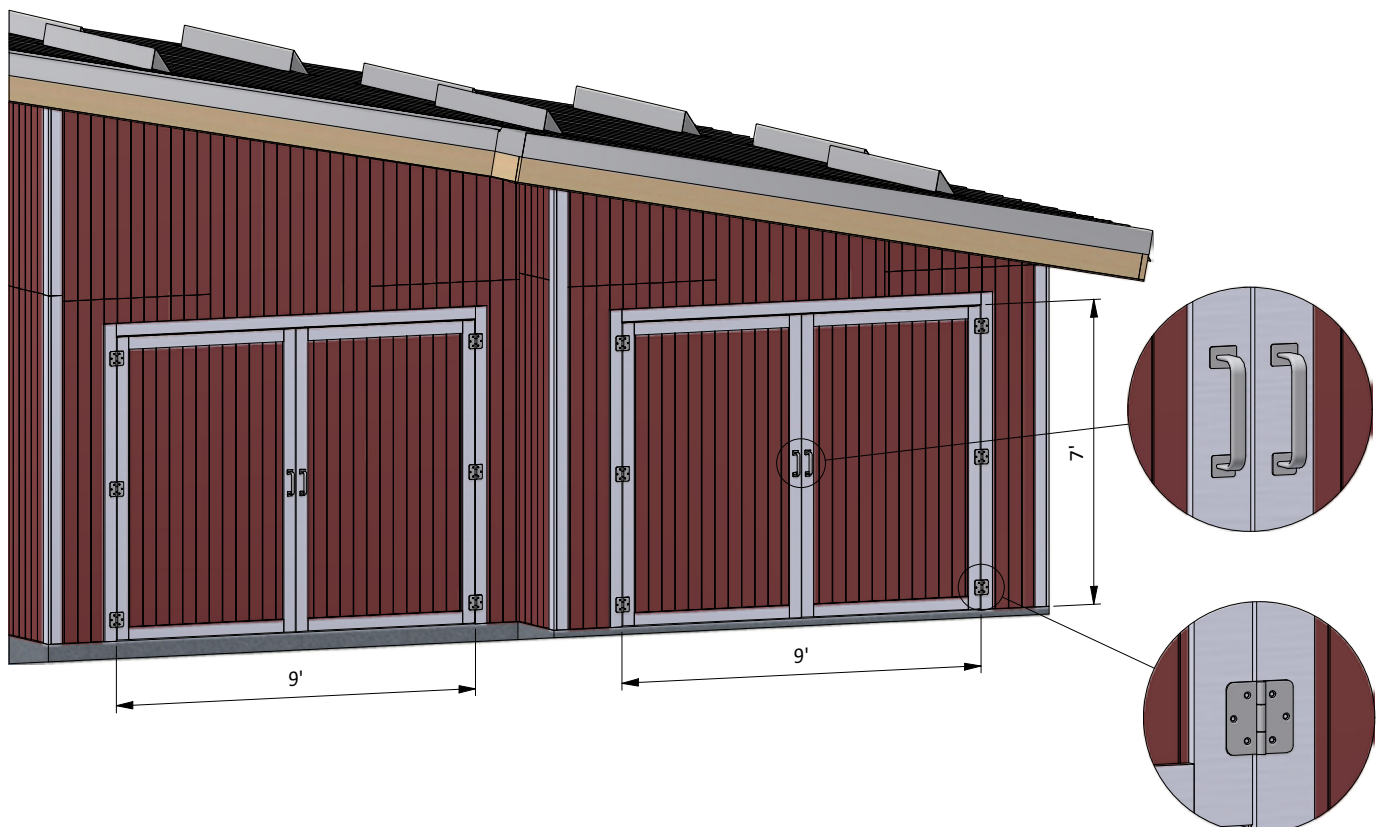
7.1 Build the door frame using 2x4 lumber. You will need two boards cut to 6'-11 1/2" that will be the vertical girts, two boards cut to 3'-10 3/4" that will be the horizontal girts and one board cut to 7'-5 1/2" that will be the cross brace.

7.2 Prepare the 11/32" plywood siding for outer sheathing. You will need to cut one 4' x 6'-11 1/2" sheet and one 5 3/4" x 6'-11 1/2" for the door according to the drawing.

7.3 Using 1x4 lumber, prepare trims and install with 2" wood screws to the walls. You will need to prepare boards in necessary quantity according to the cutting list below

7.4 Install six 4" door hinges using 1" wood screws for each double door. Finish the door installation by attaching two 6" door pulls.

Pos	Descriptio	Material	Dimension	Qty
A	Girt	2x4	6'-11 1/2"	8
B	Girt	2x4	3'-10 3/4"	8
C	Cross brace	2x4	7'-5 1/2"	4
D	Door sheathing	11/32" plywood	4' x 6'-11 1/2"	4
E	Door sheathing	11/32" plywood	5 3/4" x 6'-11 1/2"	4
F	Door trim	1x4	3'-10 3/4"	8
G	Door trim	1x4	6'-11 1/2"	8



STEP 8

Assemble and Install Garage Side Door

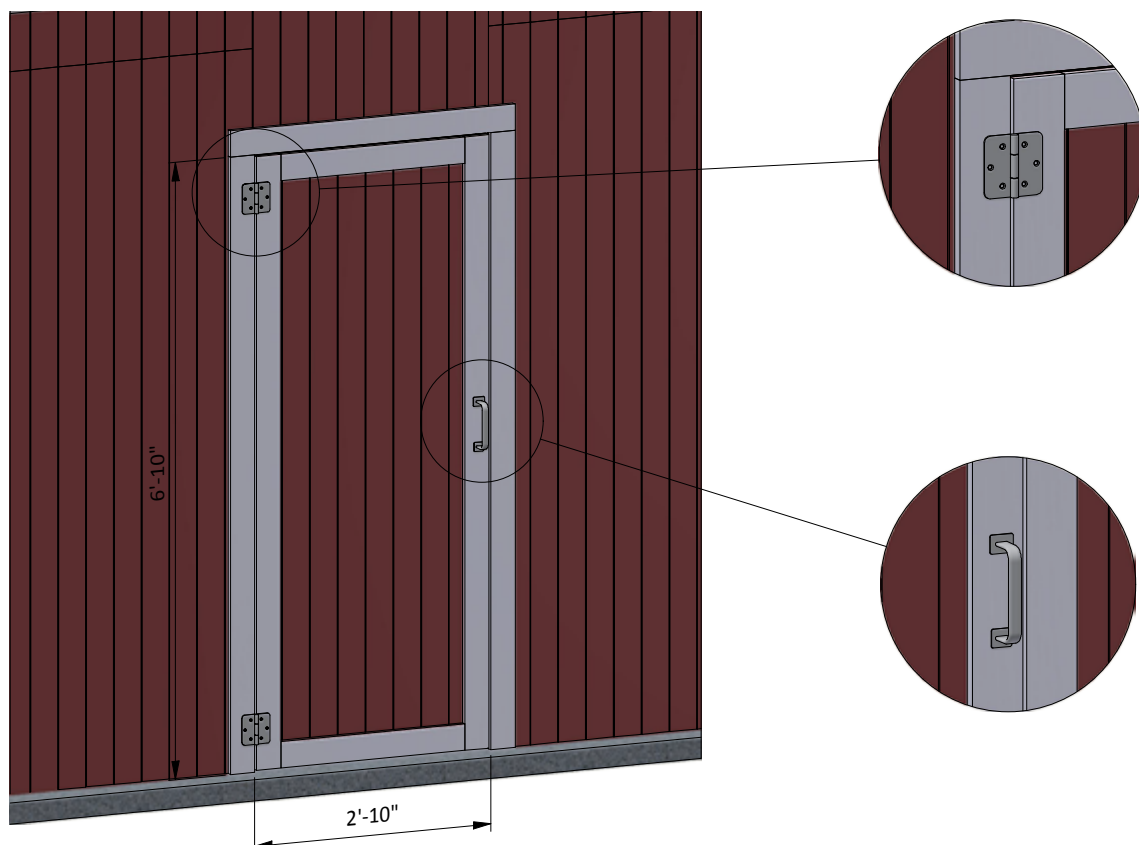
8.1 Build the door frame using 2x4 lumber. You will need two boards cut to 6'-9 1/2" that will be the vertical girts, two boards cut to 2'-2 1/2" that will be the horizontal girts and one board cut to 6'-7" that will be the cross brace.

8.2 Prepare the 11/32" plywood siding for outer sheathing.
You will need to cut one 2'-9 1/2" x 6'-9 1/2" sheet for the door according to the drawing.

8.3 Using 1x4 lumber, prepare trims and install with 2" wood screws to the walls.
You will need to prepare boards in necessary quantity according to the cutting list below

8.4 Install two 4" door hinges using 1" wood screws.
Finish the door installation by attaching two 6" door pull.

Pos	Descriptio	Material	Dimension	Qty
A	Girt	2x4	6'-9 1/2"	2
B	Girt	2x4	2'-2 1/2"	2
C	Cross brace	2x4	6'-7"	1
D	Door sheathing	11/32" plywood	2'-9 1/2" x 6'-9 1/2"	1
E	Door trim	1x4	2'-2 1/2"	2
F	Door trim	1x4	6'-9 1/2"	2



STEP 9

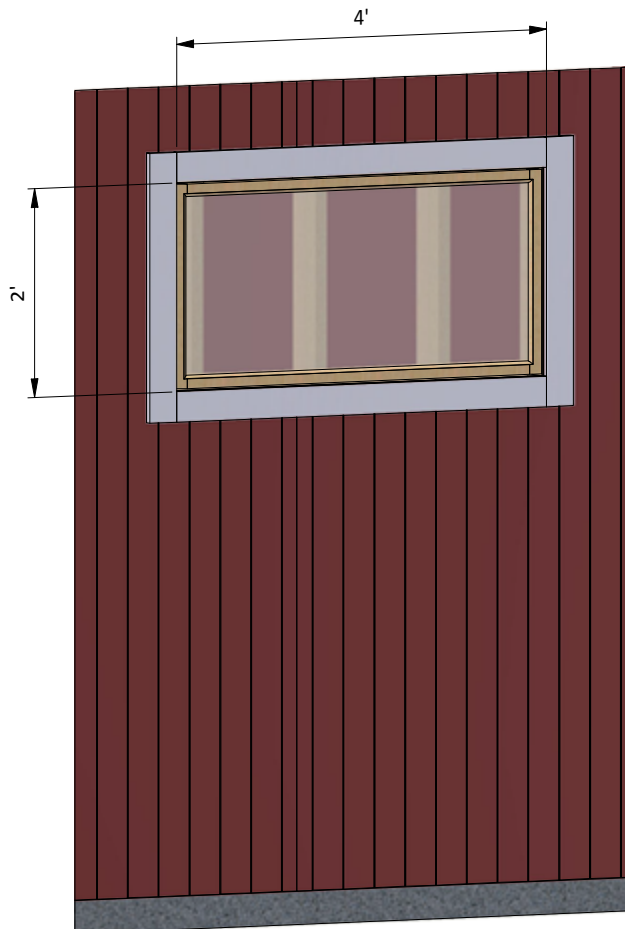
Window Installation for the Left Wall

9.1 Using 2x2 lumber, assemble the outer frame for the window as shown in the drawing below. You will need to prepare vertical and horizontal girts. Cut the recesses in each beam for splicing connection and mill a recess for the glass.

9.2 Prepare and install glass into inner frame groove and fasten it by window beading from four sides. Use 1/2" galvanized nails.

9.3 Insert window into side wall openings and connect them with 3" wood screws to the wall beams.

Pos	Descriptio	Material	Dimension	Qty
A	Vertical girts	2x2	1'-11 1/2"	2
B	Top/bottom beam	2x2	3'-11 1/2"	2
C	Glass	1/8"	1'-9 1/4" x 3'-9 1/4"	1
D	Window beading			12ft



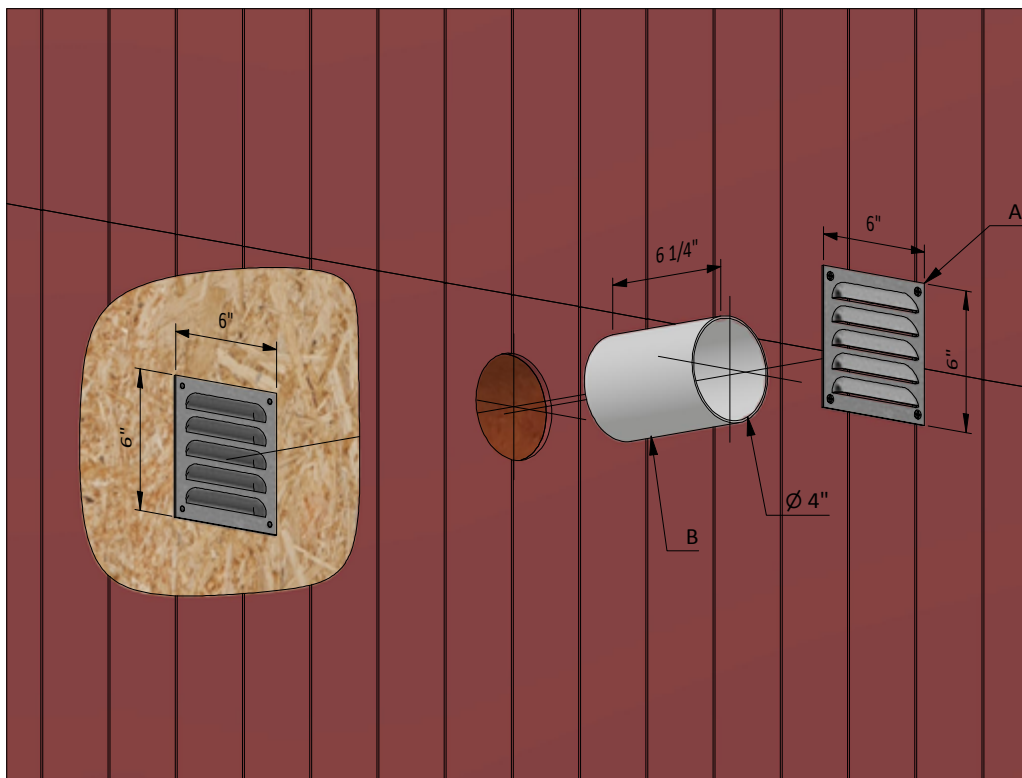
STEP 10

Install the Ventilation Louver

10.1 Insert the 4" ventilation pipe to isolate the inner space between walls.

10.2 Fix the louvers to the outer and inner walls, completely overlaying the opening.

Pos	Descriptio	Material	Dimension	Qty
A	Ventil tion lou er	26 Gauge galvanized steel	6" x 6"	8
B	Ventil tion pip	4" pipe	4 1/4"	4



STEP 11

Final Touches

Now that your garage is all done, you are ready to decorate it any way you want using your favorite paint, stain, or preservative.



Compare our Free vs. Premium plan

This perfectly designed plan will guide you through the entire process of building your very own shed for any backyard or garden.



Check out the benefits you would get with our **premium edition**:

Features	Free plan	Premium edition
Steps count	11	17
Illustrations for Each Step	✓	✓
Print Ready	✓	✓
Step By Step Instructions	✓	✓
Full Materials and Cuttings List	✗	✓
Additional Illustrations	✗	✓
Additional Blueprints	✗	✓
Tools List	✗	✓
Fastening Elements List	✗	✓
Technical Support	✗	✓

BUY NOW



For more great **HOW-TO** plans please visit: <https://shedplans.org>

Copyright

The text and illustrations that appear here are the exclusive property of shedplans.org and are protected by federal copyright laws. The duplication, sale or distribution of any portion of these plans without prior written consent from the original designer will be subject to the appropriate penalties for copyright infringement. Sharing this plan on the web is only permitted with an indicated original source: <https://shedplans.org>