



Compare our Free vs. Premium plan

This perfectly designed plan will guide you through the entire process of building your very own shed for any backyard or garden.



Check out the benefits you would get with our premium edition:

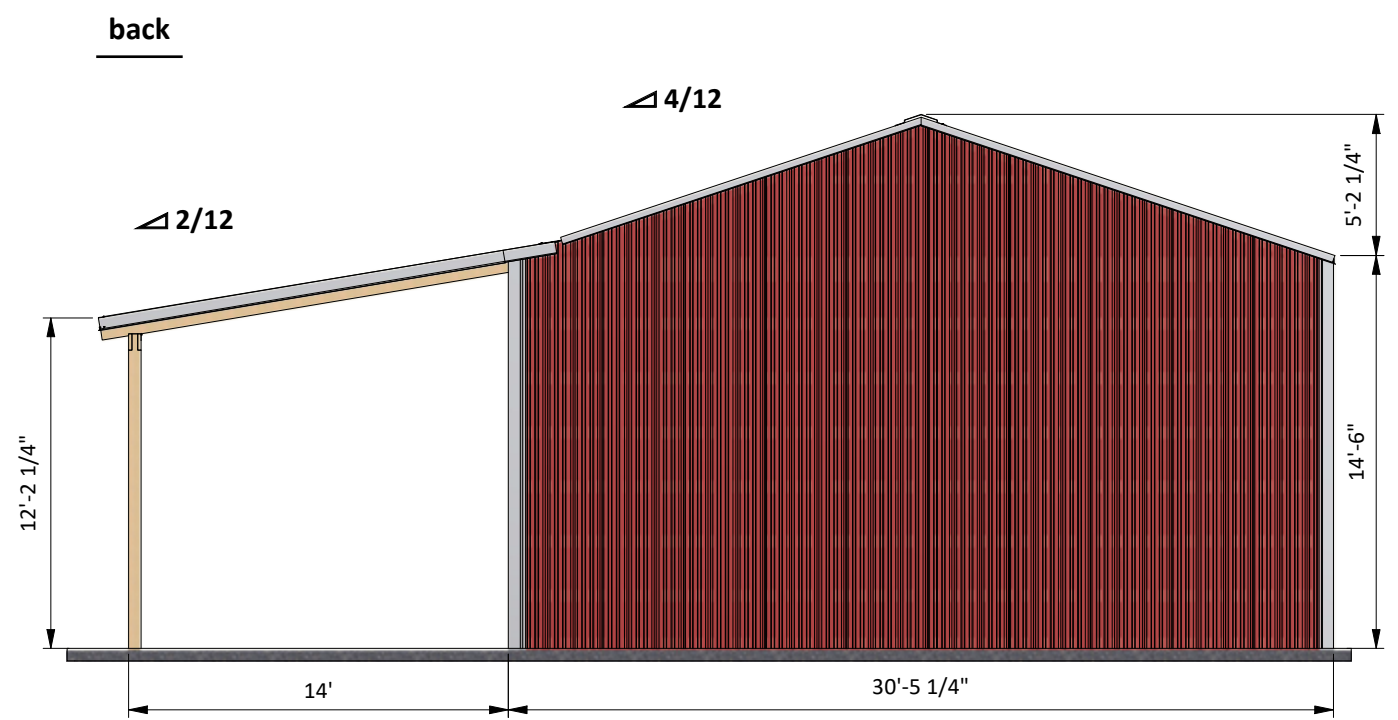
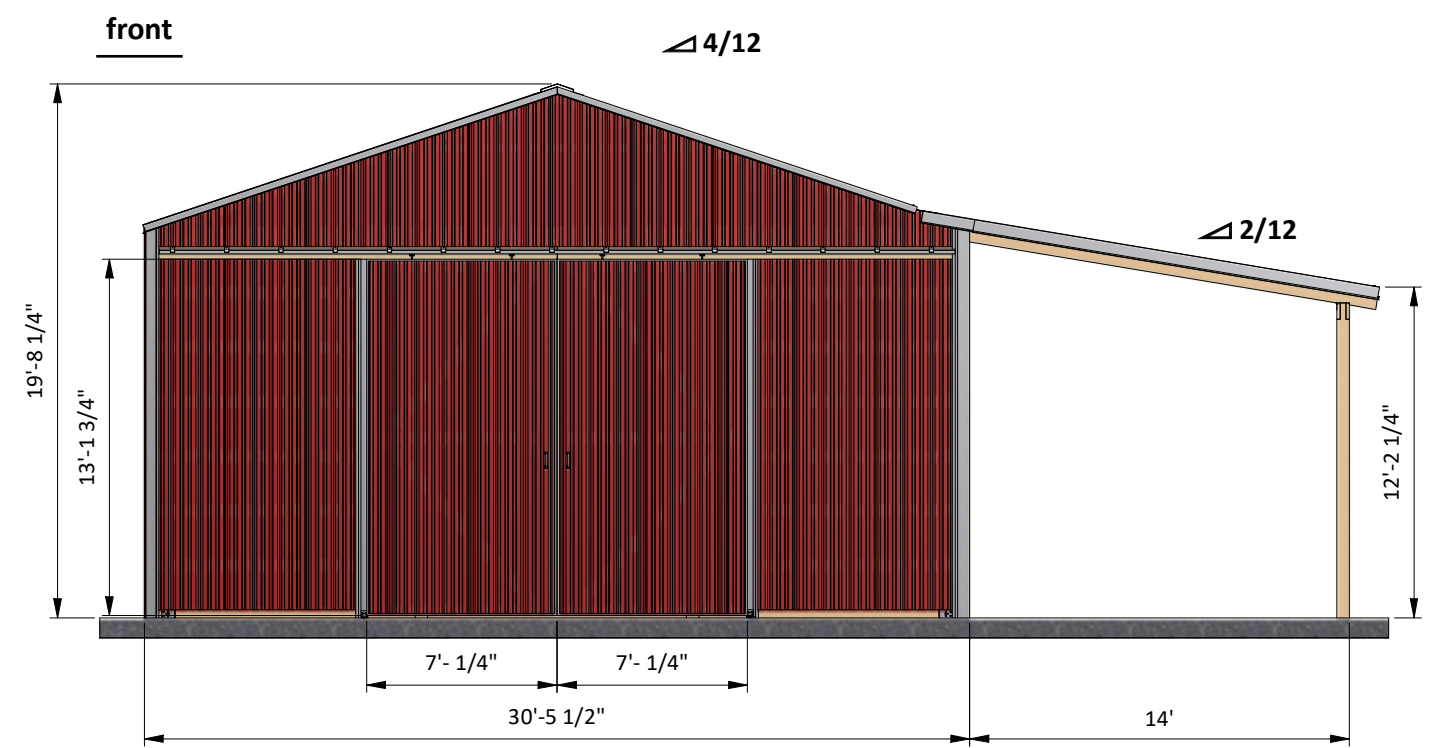
Features	Free plan	Premium edition
Steps count	8	9
Illustrations for Each Step Print	✓	✓
Ready	✓	✓
Step By Step Instructions Full	✓	✓
Materials and Cuttings List	✗	✓
Additional Illustrations	✗	✓
Additional Blueprints	✗	✓
Tools List	✗	✓
Fastening Elements List Technical	✗	✓
Support	✗	✓

BUY NOW

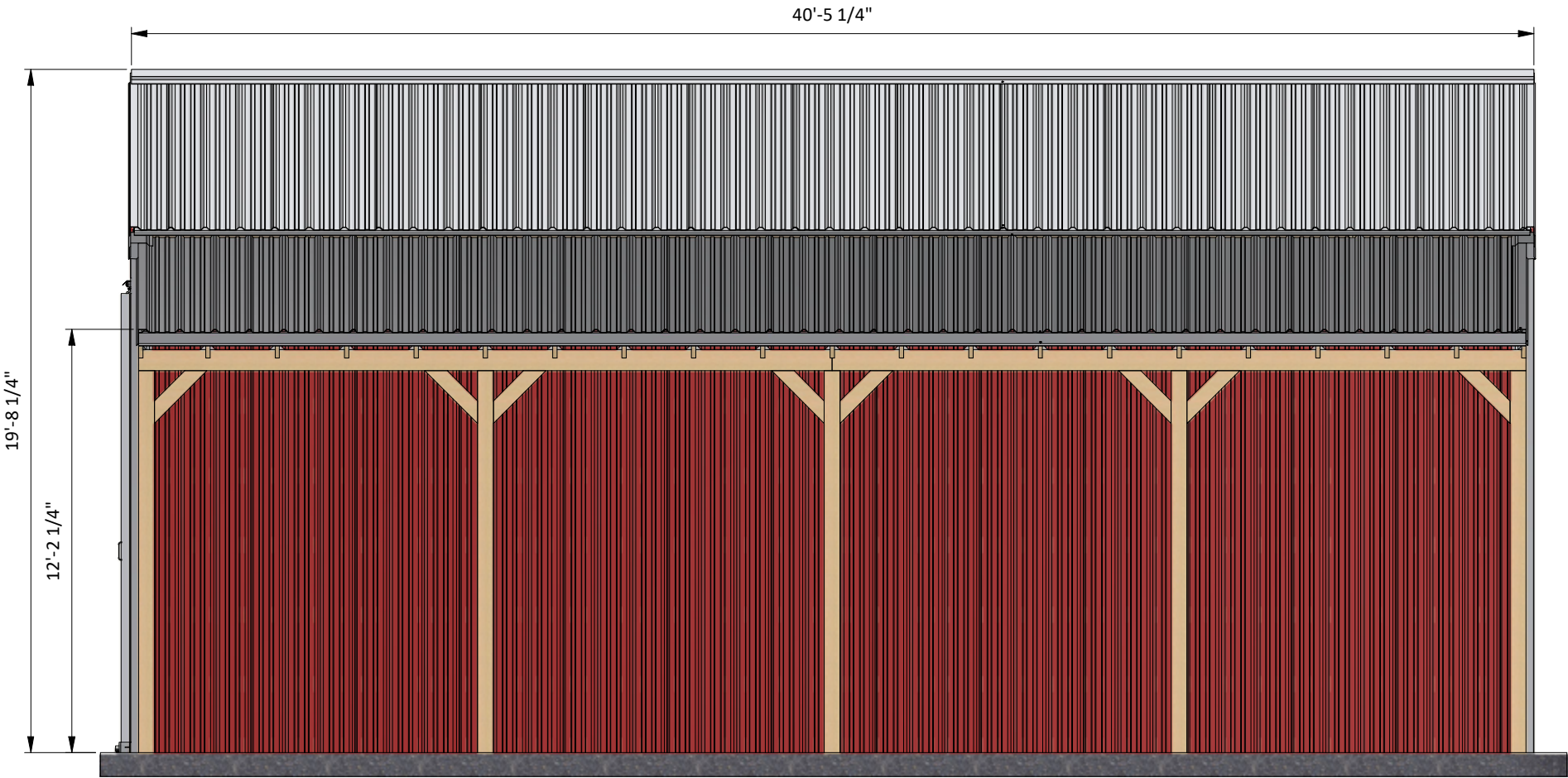
30' x 40' Pole barn shopping list

Item	Unit	Qty	Size
Lumber (2 x 10)	pcs	2	8'
Lumber (2 x 10)	pcs	1	14'
Lumber (2 x 10)	pcs	3	16'
Lumber (2 x 4)	pcs	47	8'
Lumber (2 x 6)	pcs	40	8'
Lumber (2 x 6)	pcs	73	10'
Lumber (2 x 6)	pcs	15	12'
Lumber (2 x 6)	pcs	4	14'
Lumber (2 x 6)	pcs	38	20'
Lumber (2 x 8)	pcs	21	16'
Lumber (2 x 8)	pcs	4	20'
Lumber (6 x 6)	pcs	4	6'
Pressure Threated Lumber (6 x 6)	pcs	5	16'
Pressure Threated Lumber (6 x 6)	pcs	10	18'

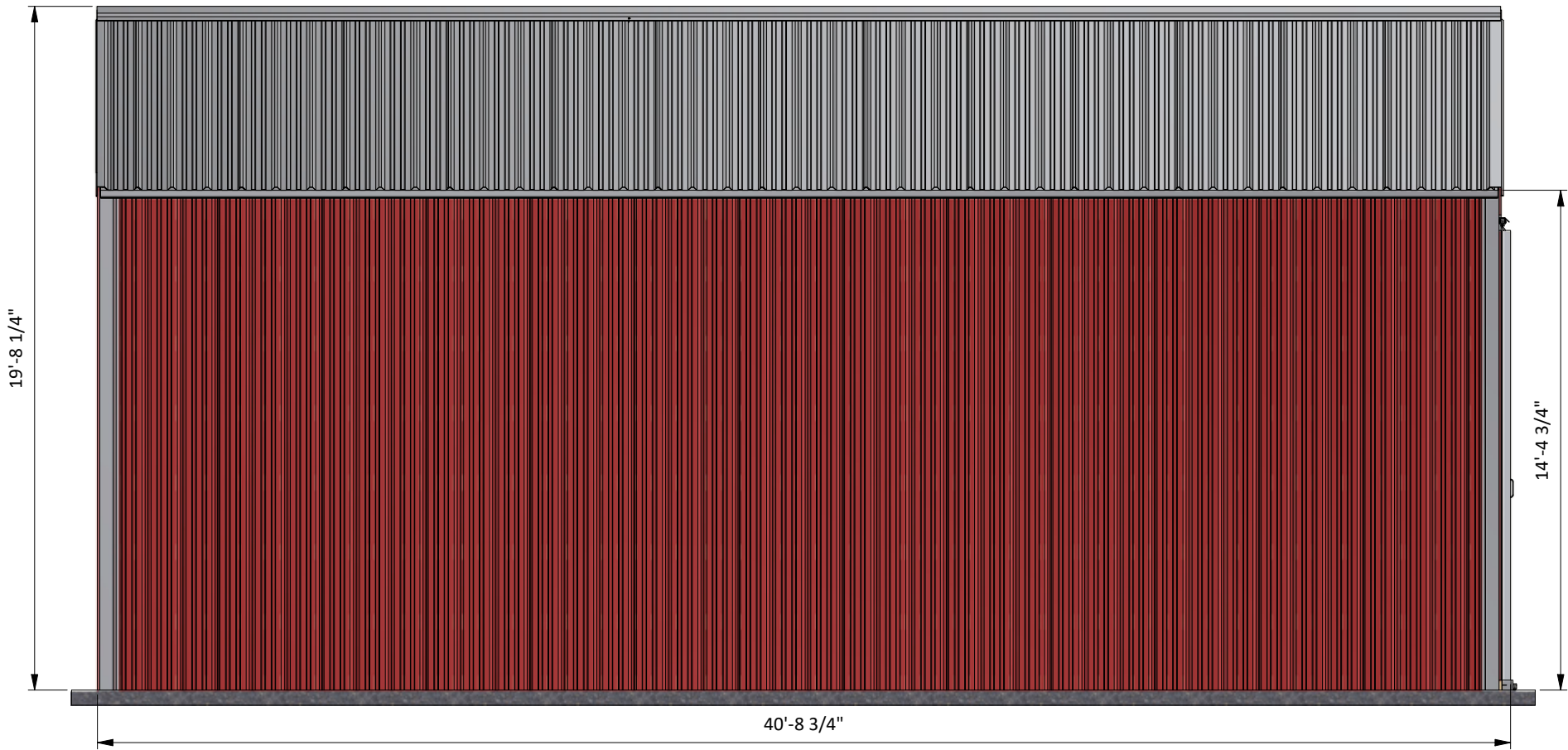
Size & Dimensions



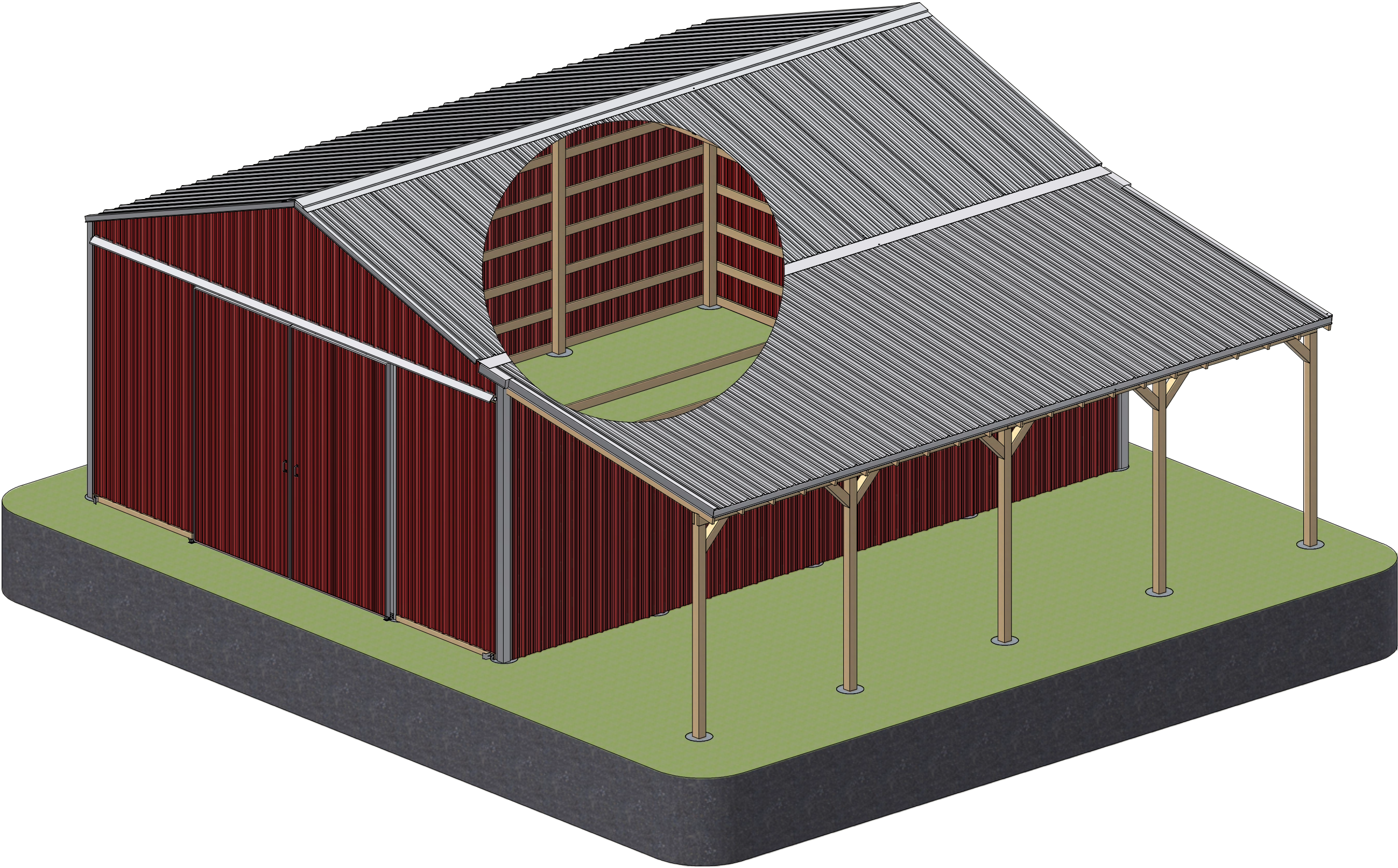
right



left



Interior view

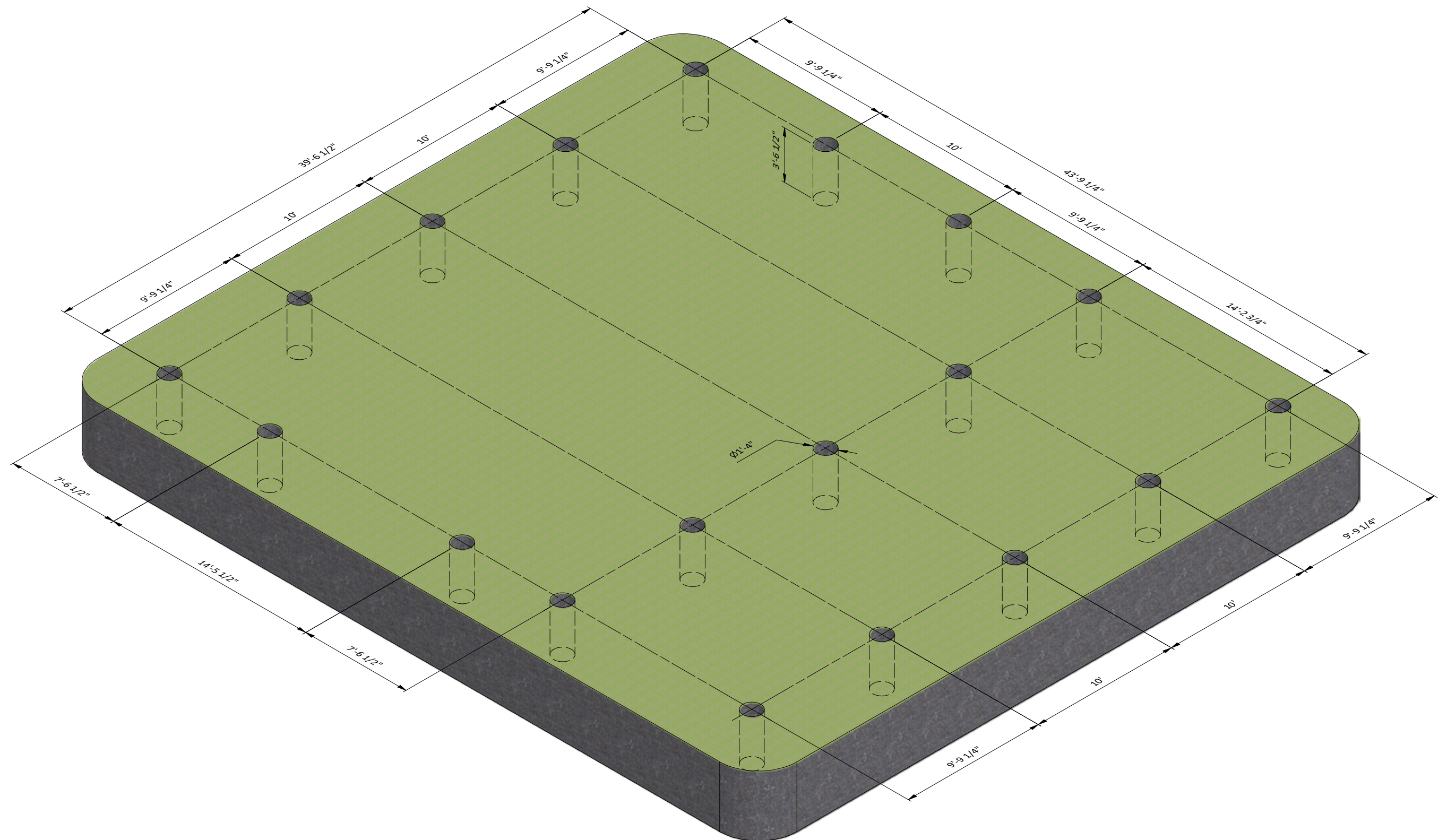


STEP 1

Foundation Preparation

1.1 Clear the area where you want to build the garage and layout for the foundation. Use the illustration below as a guide.

1.2 For the foundation, dig the pits at least 16" diameter and preliminary 4' deep (use your local frost depth requirement if it's need to be deeper).

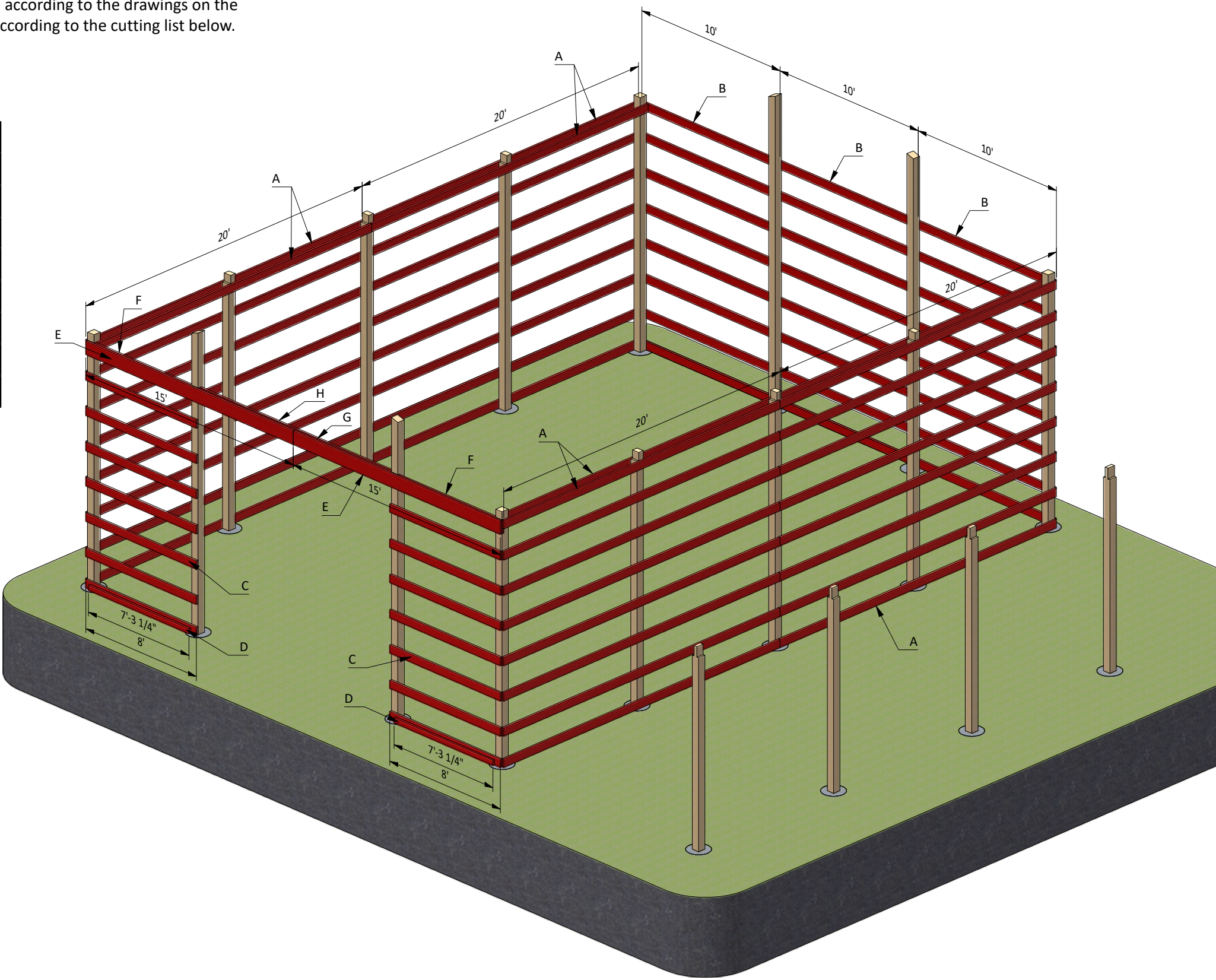


STEP 2

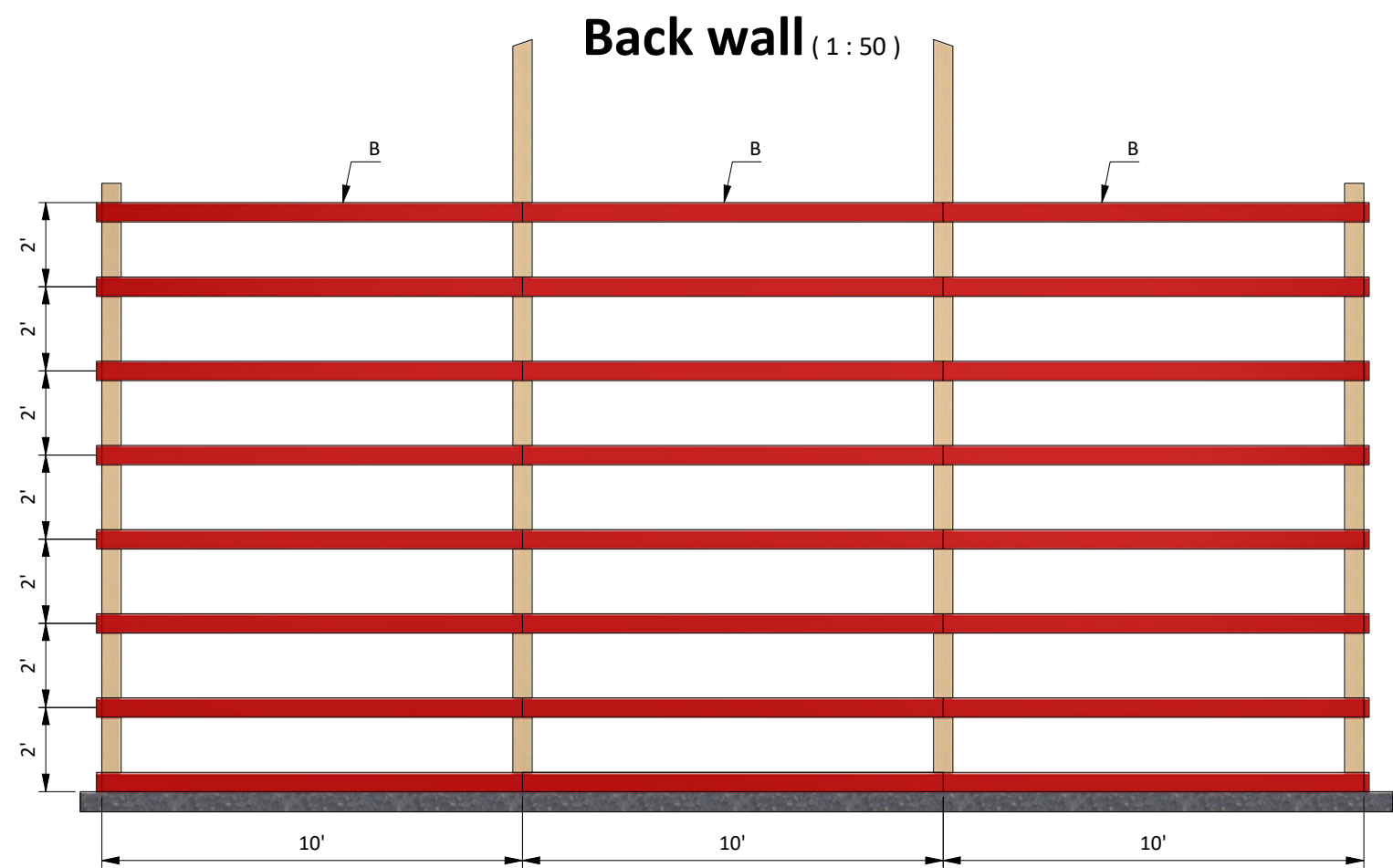
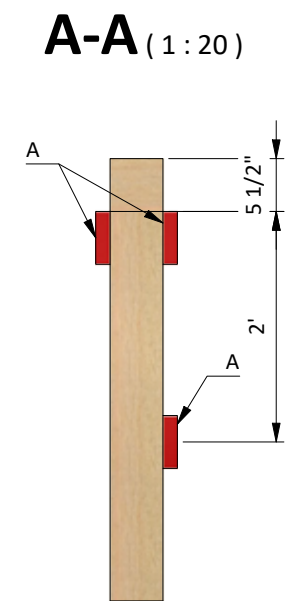
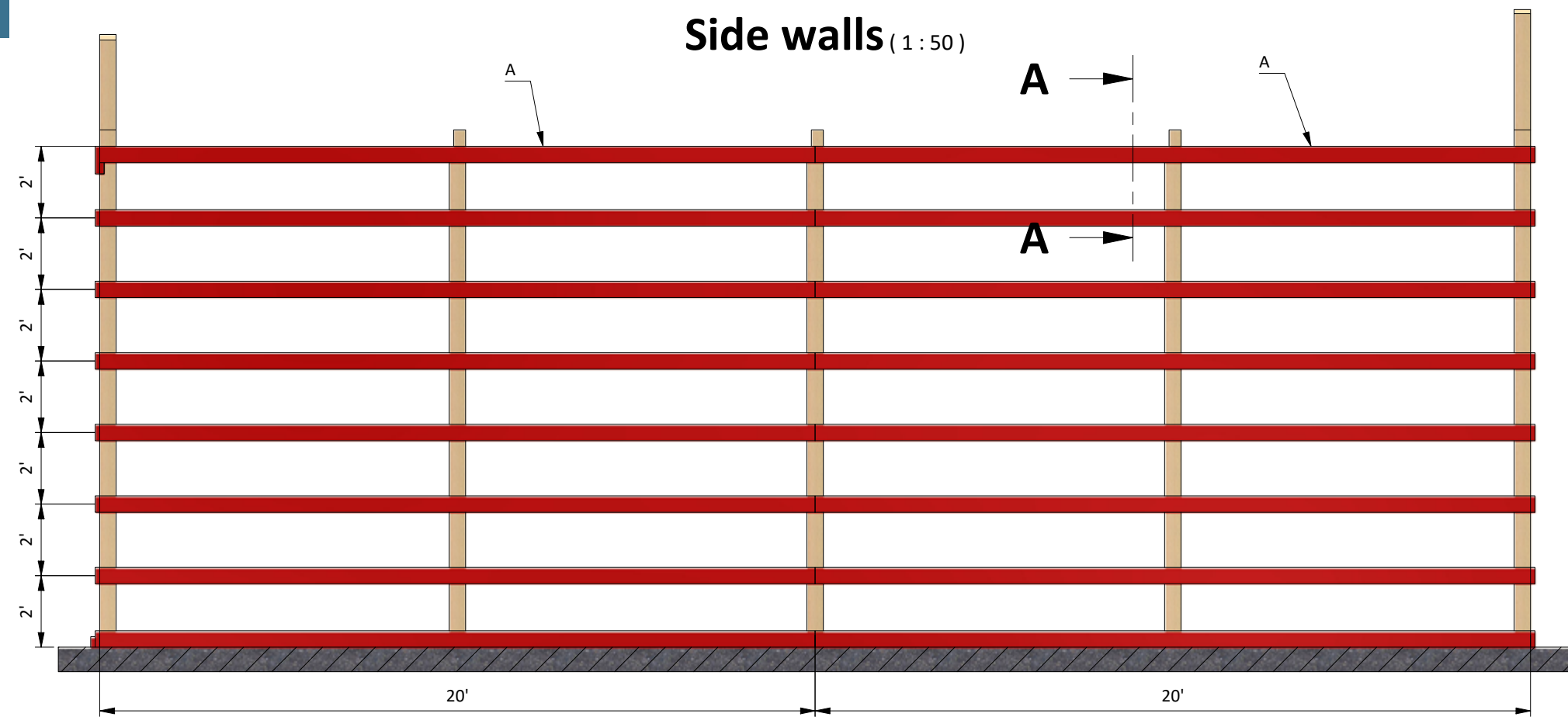
Wall Framing

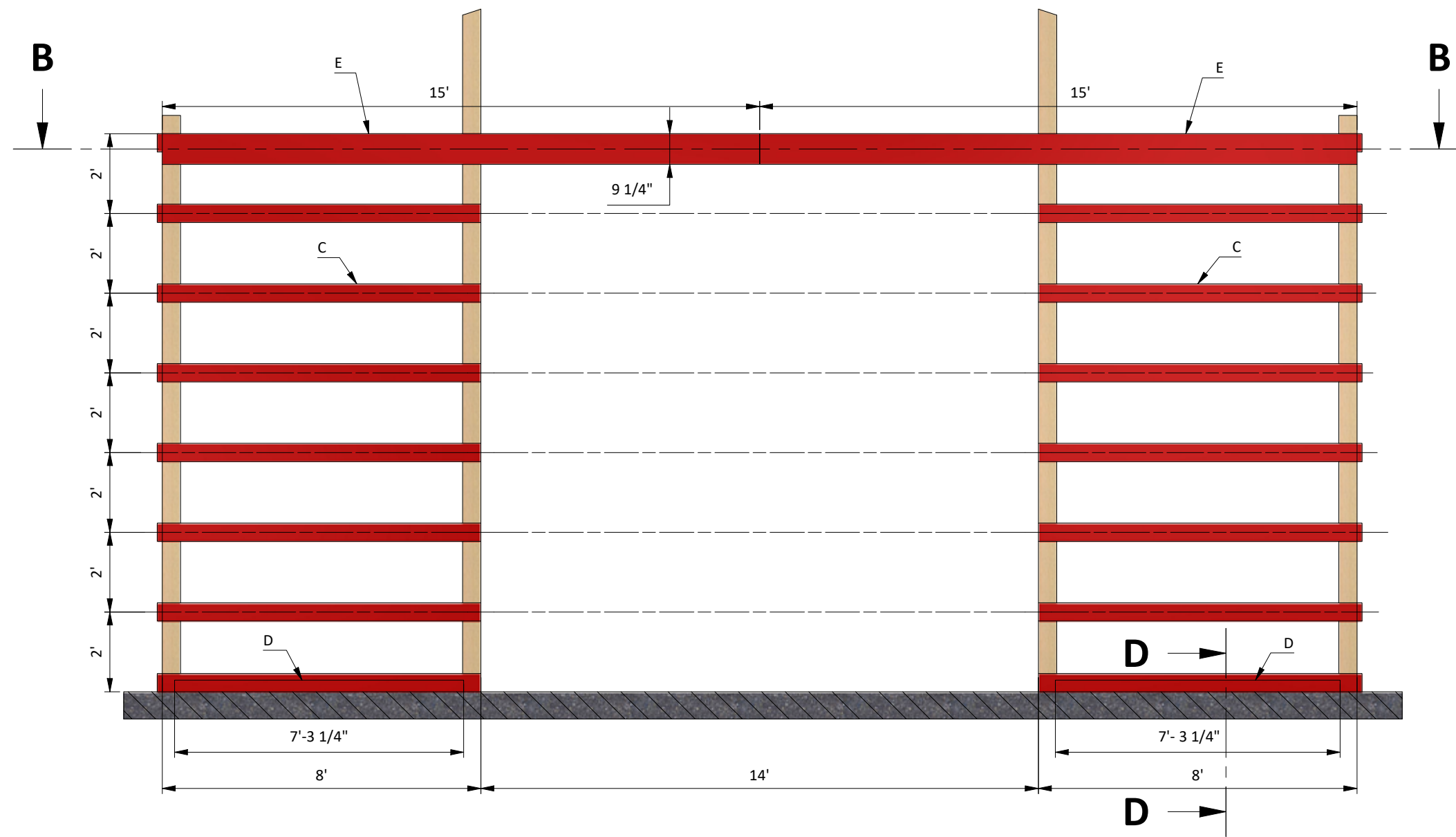
- 2.1** Using 2x4, 2x6 lumber construct wall frames using the drawing below as a reference. You will need to prepare beams in necessary quantity according to the cutting list below.
- 2.2** Using 2x10 beams construct the door header for the front wall according to the drawings on the next page. You will need to prepare beams in necessary quantity according to the cutting list below.
- 2.3** Connect the beams with #10 x 3" and 5" wood screws.

Pos	Description	Material	Dimension	Qty
A	Wall joist	2x6	20'	36
B	Wall joist	2x6	10'	24
C	Wall joist	2x6	8'	14
D	Wall joist	2x4	7'- 3 1/4"	2
E	Door header	2x10	15'	2
F	Door header	2x10	7'-9 1/4"	2
G	Door header	2x10	14'-5 1/2"	1
H	Door header	2x10	14'	1



STEP 3



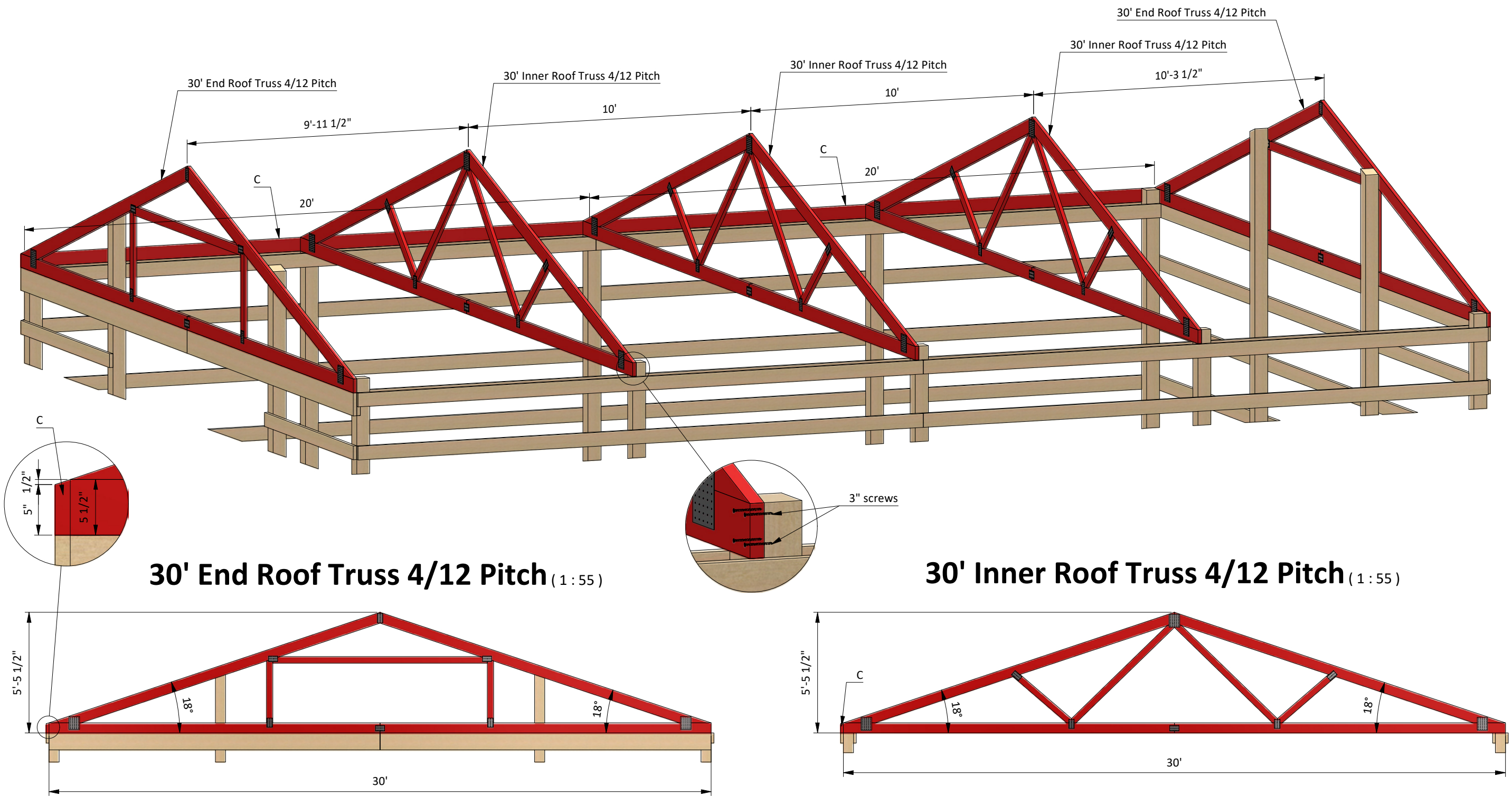


STEP 4

Assemble the Roof Frame

4.1 Lift onto the roof and install the trusses according to the diagram below. Connect them to the posts with #10 x 3" wood screws. If necessary use temporary joist for the fixation in vertical position.

Pos	Description	Material	Dimension	Qty
A	End Roof Truss 4/12 Pitch	-	30'	2
B	Inner Roof Truss 4/12 Pitch	-	30'	3
C	Fascia	2x6	20'	2



STEP 5

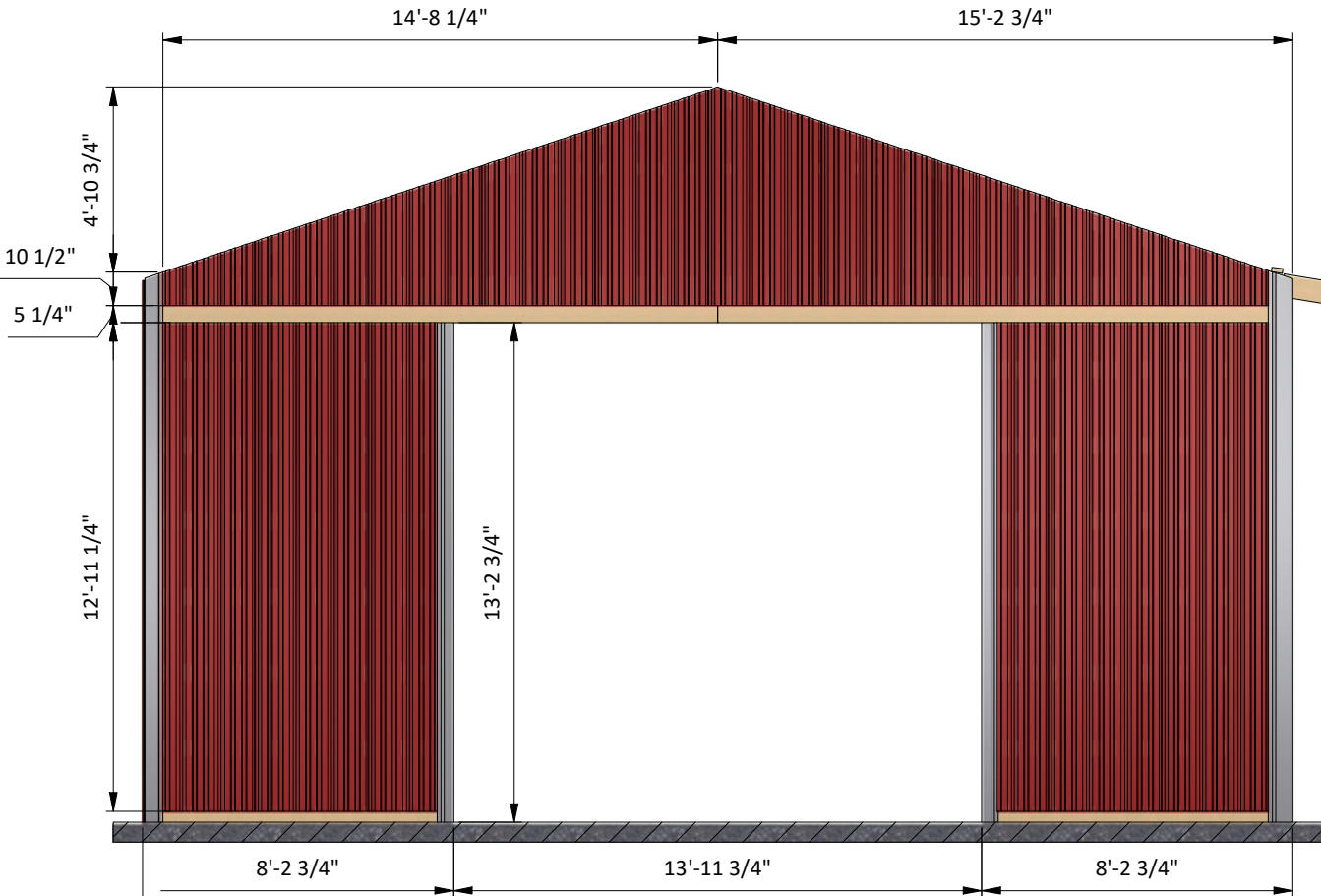
Wall Sheathing Installation

- 5.1 Install the corrugated metal wall panels to the wall frames, you will need 2000 square feet. Leave the free space on the front wall for the door hangers.
- 5.2 Cover the corners and door openings with metal trims.
- 5.3 Secure all elements with #9 x 1-1/2" and #9 x 2 1/2" screws.

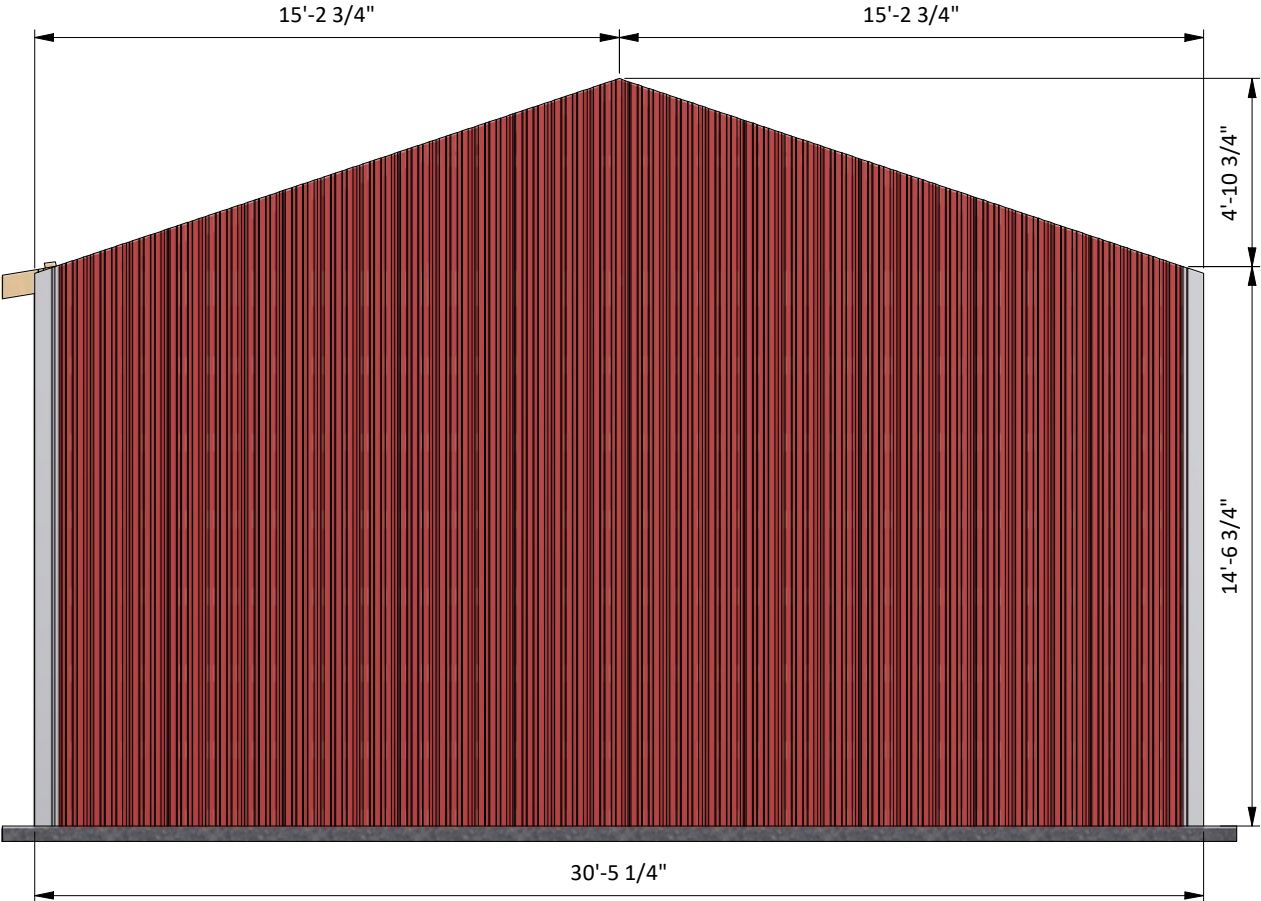
Side walls (1 : 60)



Front wall (1 : 60)



Back wall (1 : 60)



STEP 6

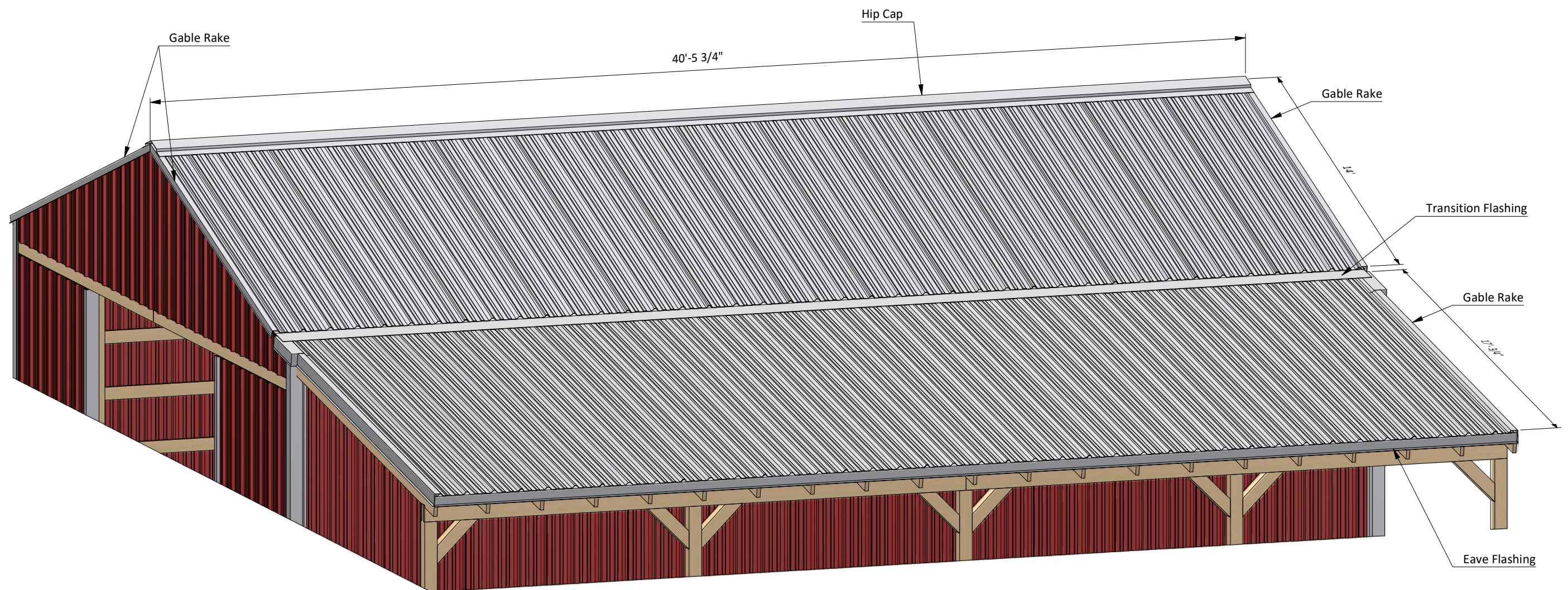
Roof Sheathing Installation

6.1 Assemble the corrugated metal roof panels, you will need 2100 square feet.

6.2 Fit the eaves flashing to cover the fascias. Install metal panels for the awning. Install transition flashing on the edge of the awning. Install metal panels on the barn roof. Cover the side edges with gable raking. Finally, install the Hip Cap on the top ridge to finish the assembly. See the nodes below for installation details.

6.3 Finalize the installation process with trims for the corners and door opening.

6.4 Secure all elements with #9 x 1-1/2" and #9 x 2 1/2" screws.



STEP 7

Assemble and Install Barn Front Door

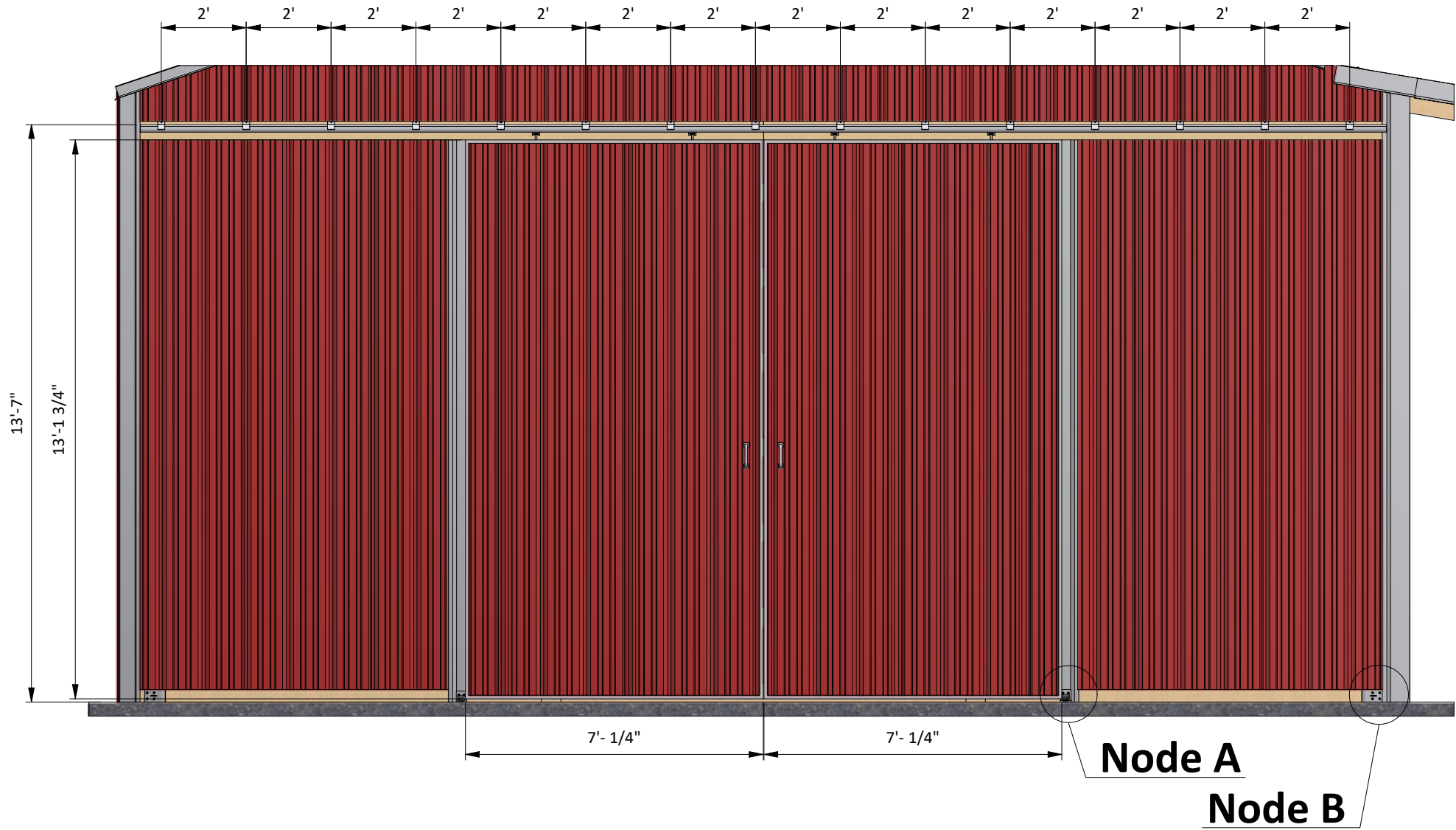
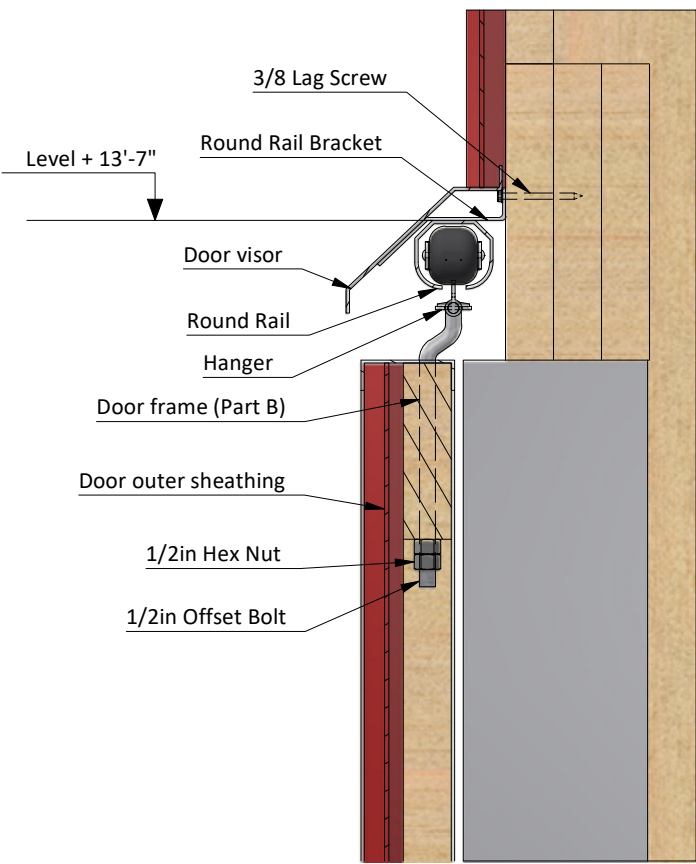
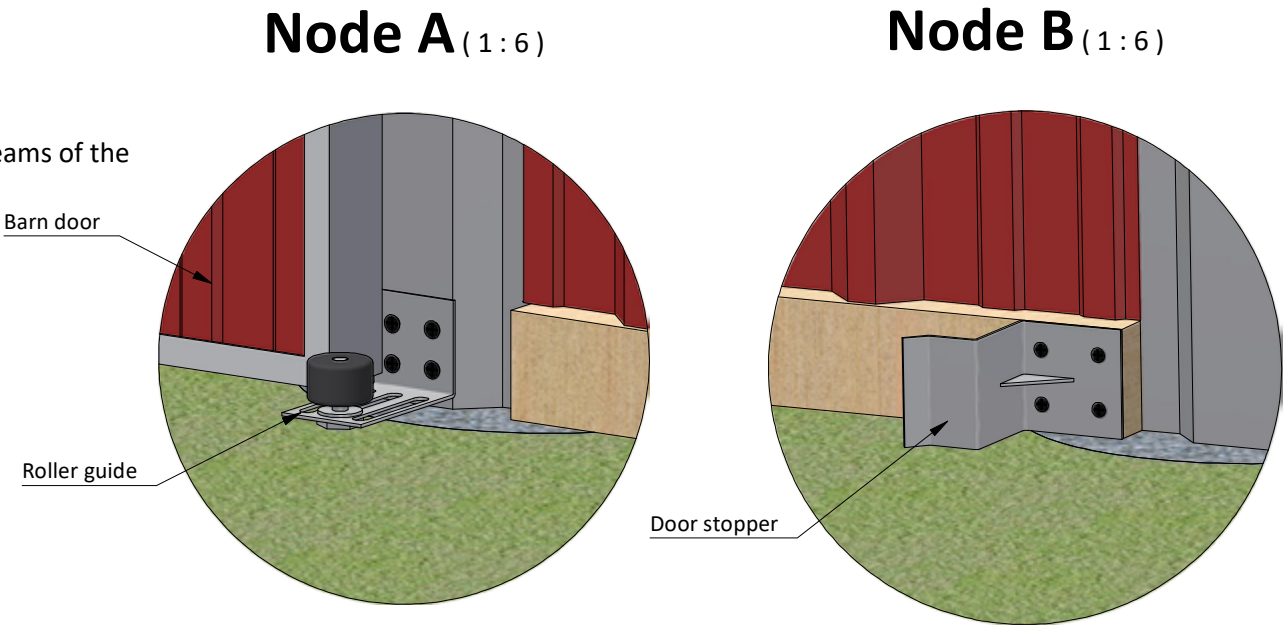
7.1 Build the door frame using 2x6 lumber. For each half door you will need two boards cut to 13'-1 3/4" that will be the vertical girts, three boards cut to 7' that will be the horizontal girts and two boards cut to 8'-5 1/2" that will be the cross braces.

7.2 Assemble the corrugated metal roof panels, you will need 100 square feet. Cover the edges with metal trims.

7.3 Install the Round Rail on the front wall with the help of Rail Brackets. Drill the openings for the hangers in the top beams of the door frame and install three Hangers for each half door. Lift the doors and insert Hangers into Round rails.

7.4 Finish the door installation by attaching door visor along the round rail, two 6" door pulls, two roller guides and two door stoppers .

Pos	Description	Material	Dimension	Qty
A	Girt	2x6	13'-1 3/4"	4
B	Girt	2x6	7'	6
C	Cross brace	2x6	8'-5 1/2"	4
D	Door sheathing	Corrugated metal panels	200 square ft	
E	Trim	Corner trims	85 ft	



STEP 8

Final Touches

Now that your pole barn is all done, you are ready to decorate it any way you want using your favorite paint, stain, or preservative.



Compare our Free vs. Premium plan

This perfectly designed plan will guide you through the entire process of building your very own shed for any backyard or garden.



Check out the benefits you would get with our premium edition:

Features	Free plan	Premium edition
Steps count	8	9
Illustrations for Each Step Print	✓	✓
Ready	✓	✓
Step By Step Instructions Full	✓	✓
Materials and Cuttings List	✗	✓
Additional Illustrations	✗	✓
Additional Blueprints	✗	✓
Tools List	✗	✓
Fastening Elements List Technical	✗	✓
Support	✗	✓

BUY NOW



For more great **HOW-TO** plans please visit: <https://shedplans.org>

Copyright

The text and illustrations that appear here are the exclusive property of shedplans.org and are protected by federal copyright laws. The duplication, sale or distribution of any portion of these plans without prior written consent from the original designer will be subject to the appropriate penalties for copyright infringement. Sharing this plan on the web is only permitted with an indicated original source: <https://shedplans.org>