



Compare our Free vs. Premium plan

This perfectly designed plan will guide you through the entire process of building your very own shed for any backyard or garden.



Check out the benefits you would get with our premium edition:

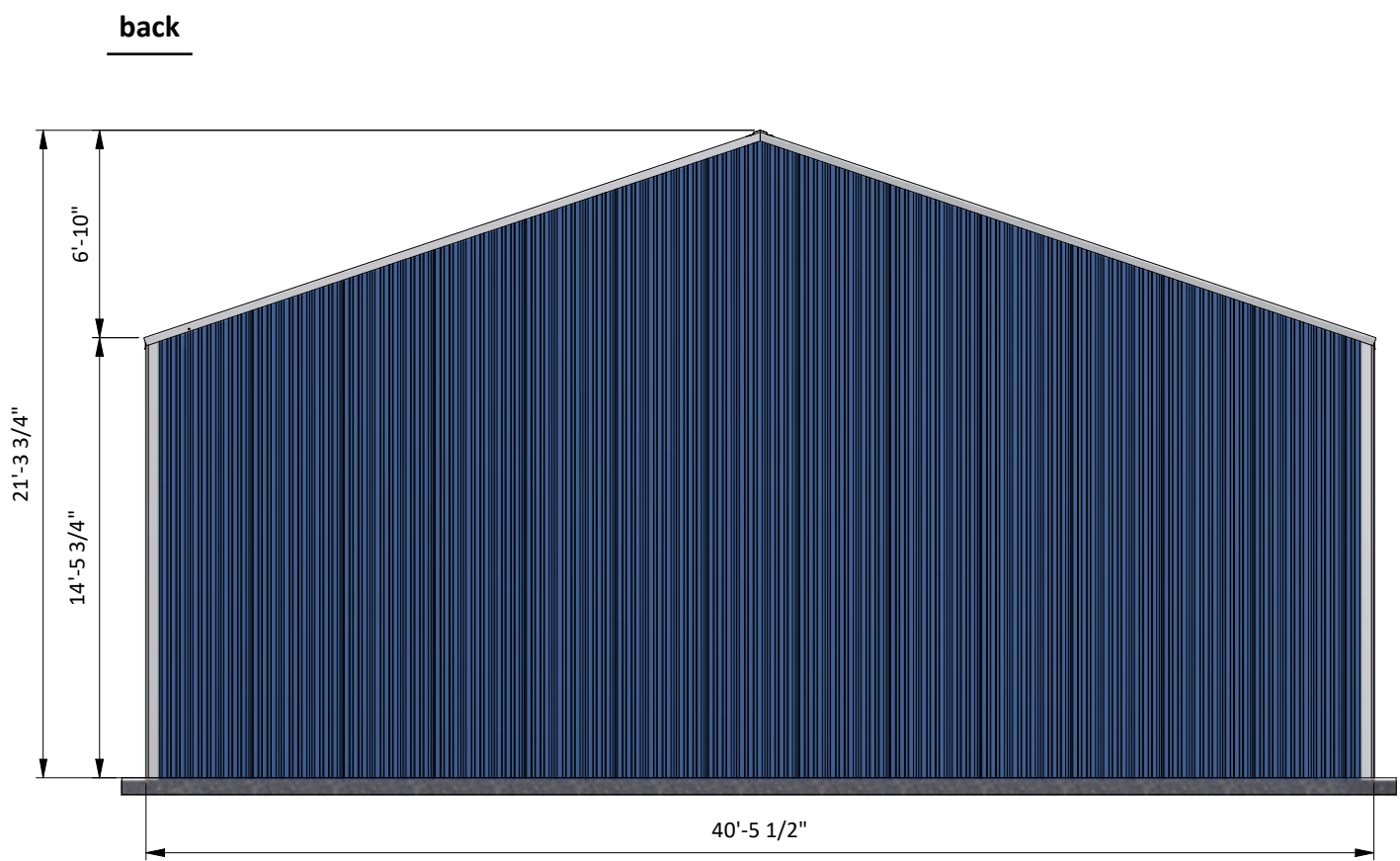
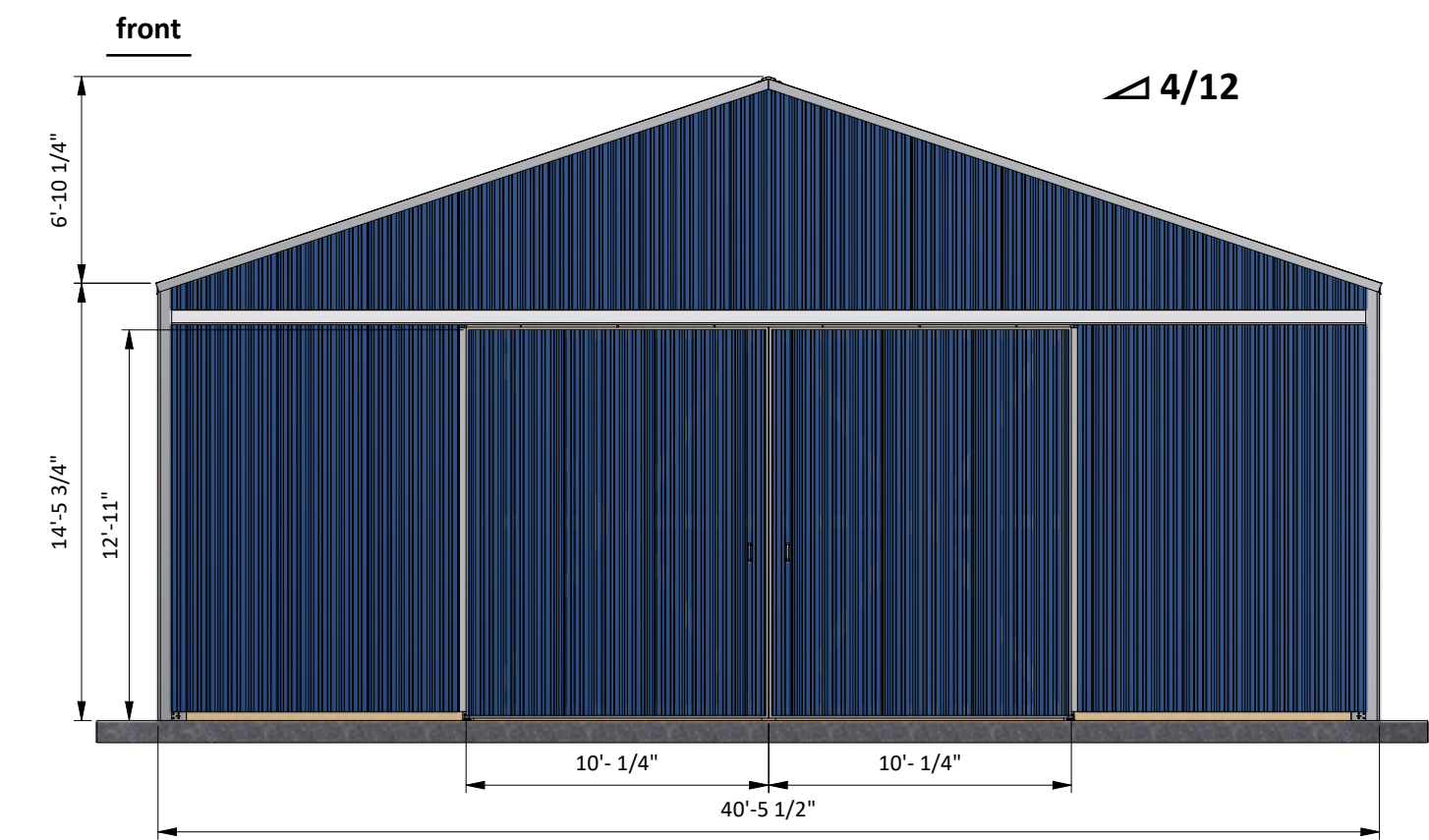
Features	Free plan	Premium edition
Steps count	8	9
Illustrations for Each Step Print	✓	✓
Ready	✓	✓
Step By Step Instructions Full	✓	✓
Materials and Cuttings List	✗	✓
Additional Illustrations	✗	✓
Additional Blueprints	✗	✓
Tools List	✗	✓
Fastening Elements List Technical	✗	✓
Support	✗	✓

BUY NOW

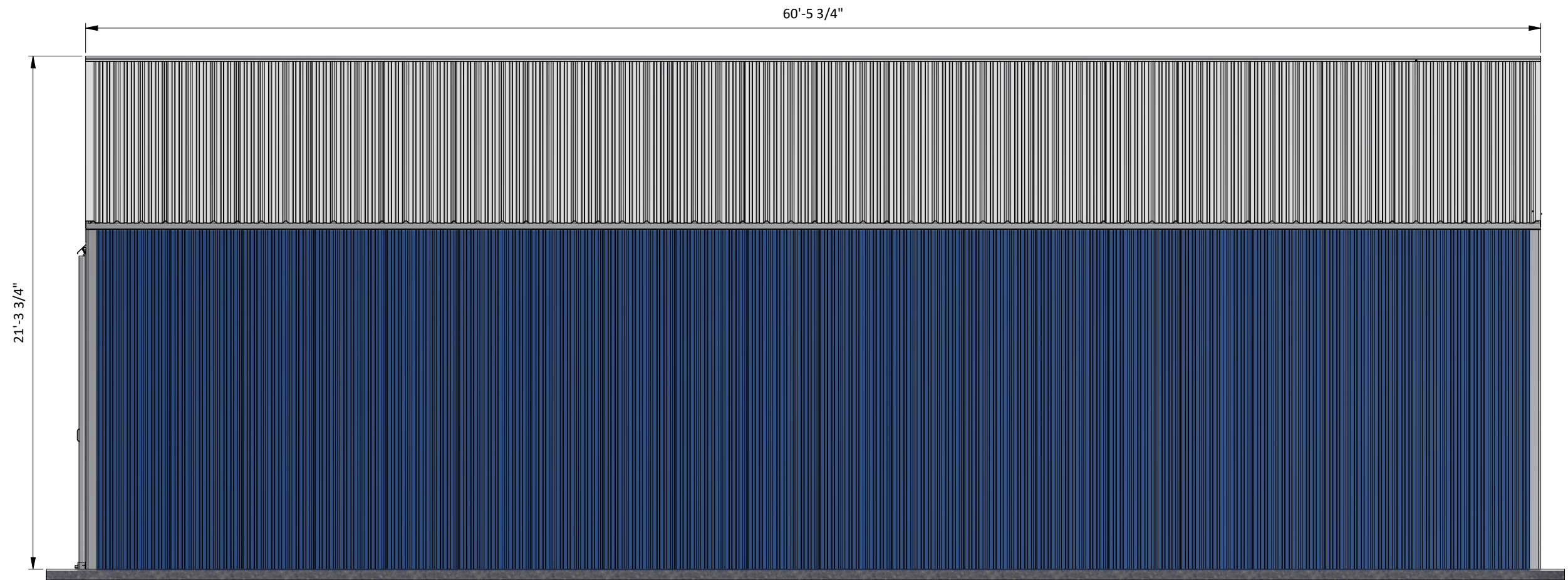
40' x 60' Pole barn shopping list

Site Preparation	Unit	Qty	Size
Concrete	cubic.yd.	3	
Corner trims	ft	190	
Corrugated metal panels	square ft	5860	
Eaves flashing	ft	125	
Gable Rake	ft	90	
Hanger	pcs	6	
Hip Cap	ft	61	
Roller guide	pcs	2	
Round rail	ft	40	
Round rail bracket	pcs	17	
Door visor	ft	40	
Door stopper	pcs	2	
End Roof Truss 4/12 Pitch	pcs	2	40'
Inner Roof Truss 4/12 Pitch	pcs	5	40'
Lumber (2 x 4)	pcs	2	10'
Lumber (2 x 6)	pcs	43	8'
Lumber (2 x 6)	pcs	126	10'
Lumber (2 x 6)	pcs	20	12'
Lumber (2 x 6)	pcs	8	14'
Lumber (2 x 6)	pcs	76	20'

Size & Dimensions



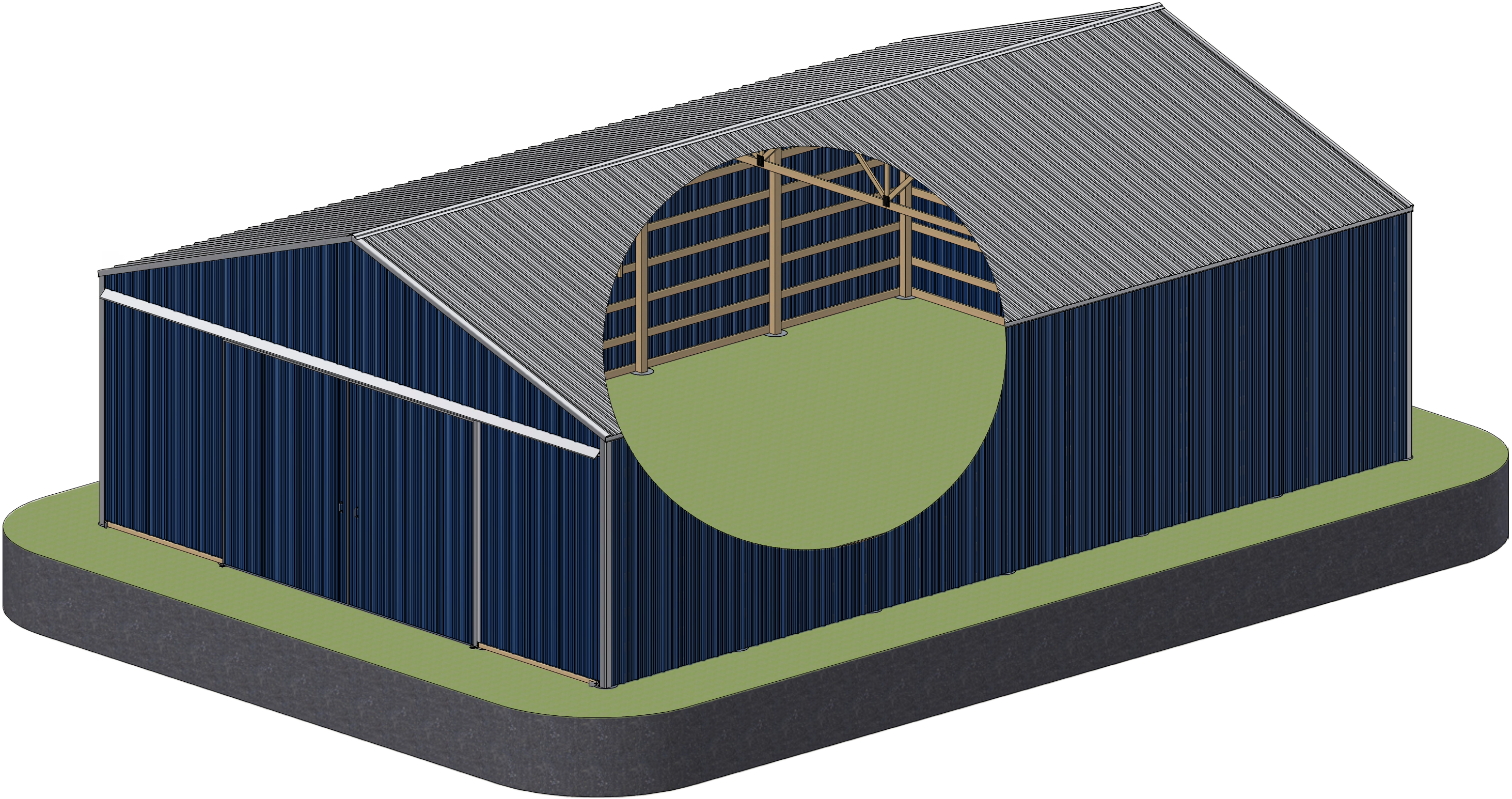
right



left



Interior view

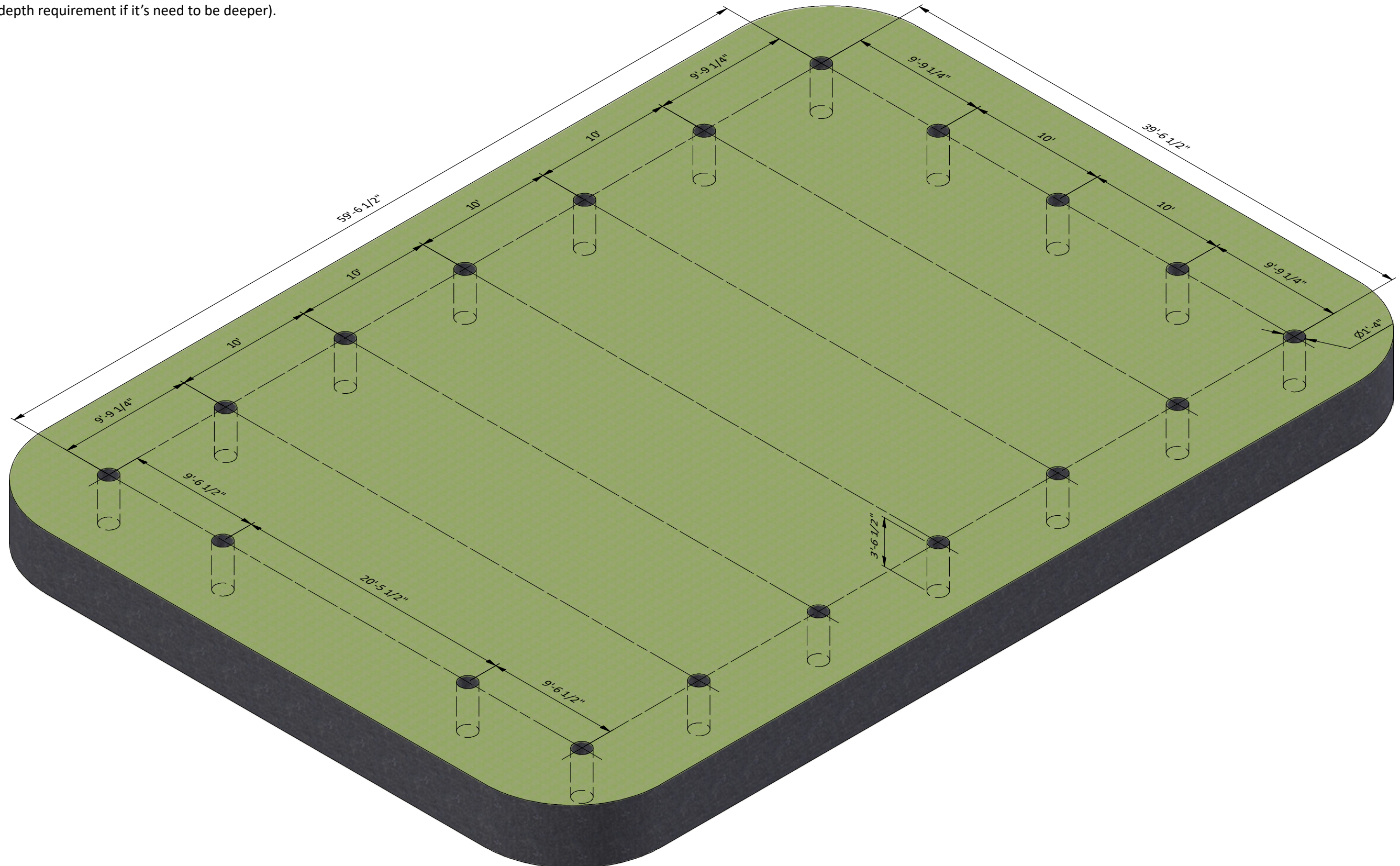


STEP 1

Foundation Preparation

1.1 Clear the area where you want to build the garage and layout for the foundation. Use the illustration below as a guide.

1.2 For the foundation, dig the pits at least 16" diameter and preliminary 4' deep (use your local frost depth requirement if it's need to be deeper).



STEP 2

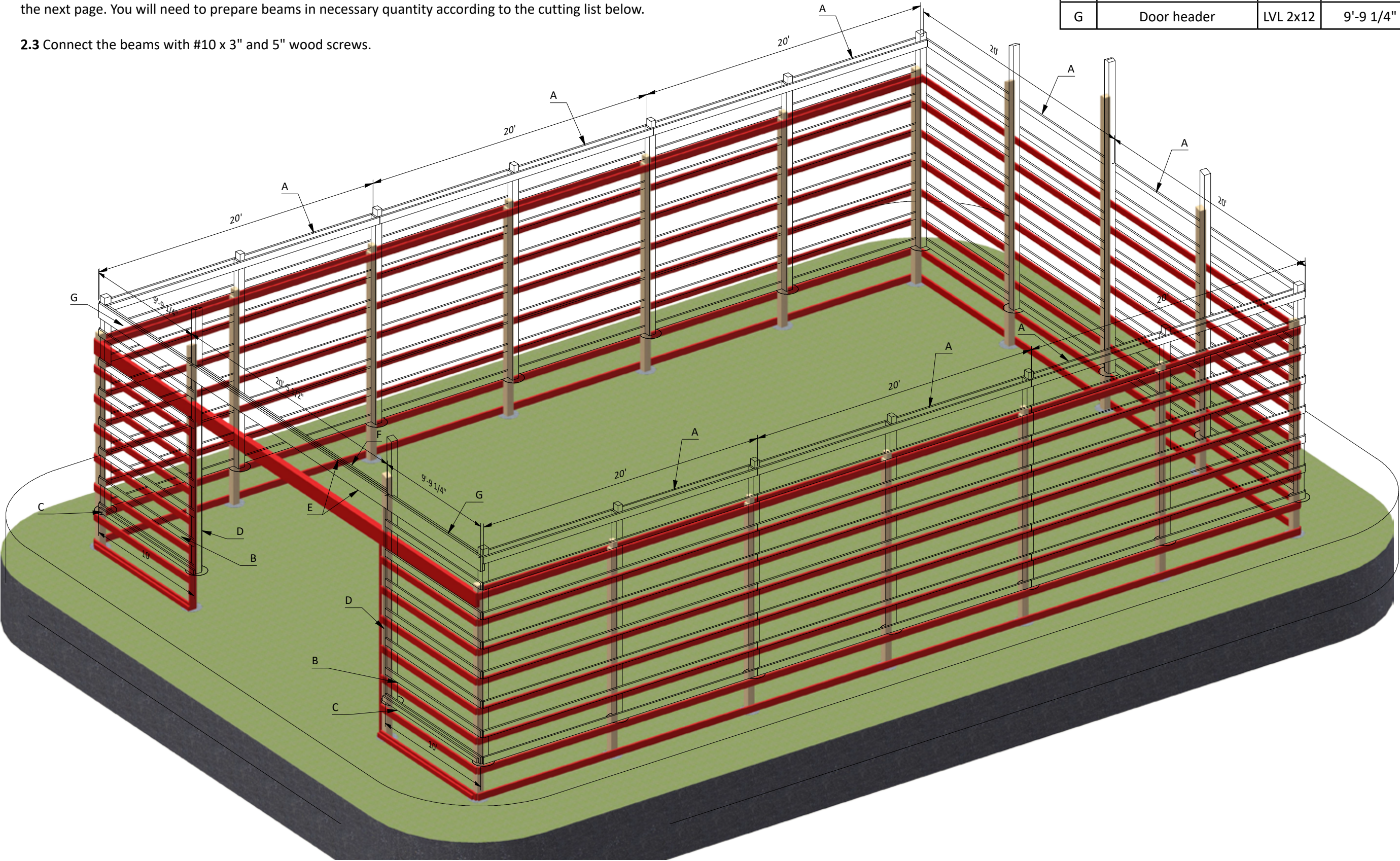
Wall Framing

2.1 Using 2x4, 2x6 lumber construct wall frames using the drawing below as a reference. You will need to prepare beams in necessary quantity according to the cutting list below.

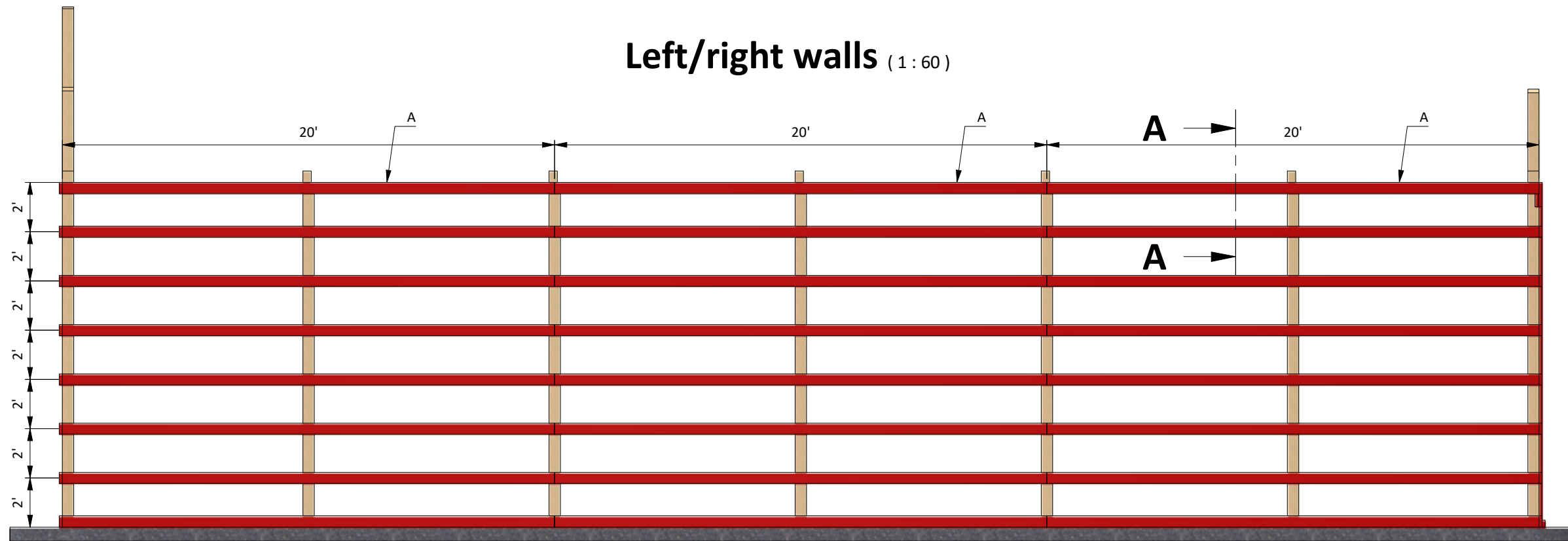
2.2 Using 2x12 LVL beams construct the door header for the front wall according to the drawings on the next page. You will need to prepare beams in necessary quantity according to the cutting list below.

2.3 Connect the beams with #10 x 3" and 5" wood screws.

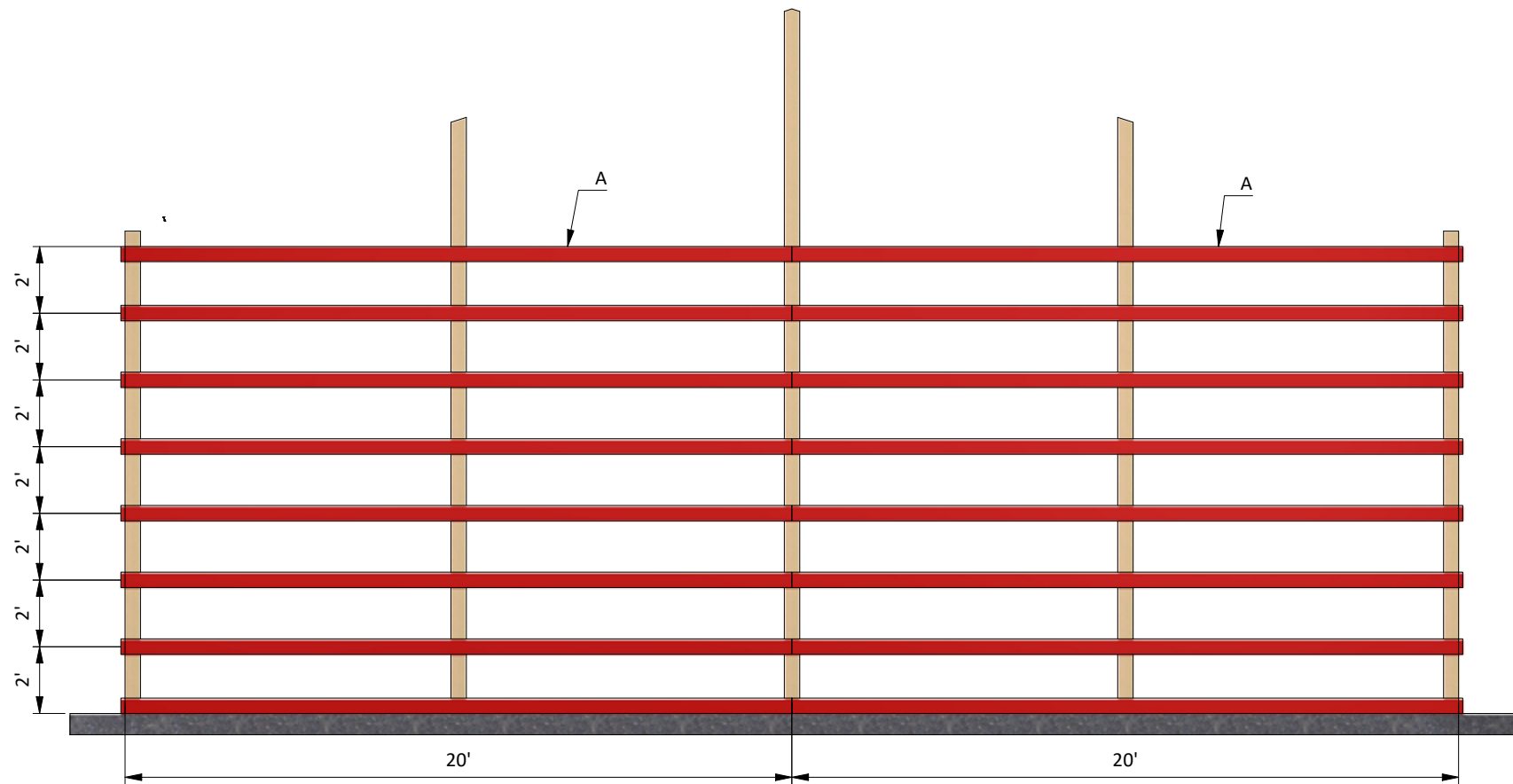
Pos	Description	Material	Dimension	Qty
A	Wall joist	2x6	20'	70
B	Wall joist	2x6	10'	14
C	Wall joist	2x4	9'-10 3/4"	2
D	Stud	2x6	13'-1/4"	2
E	Door header	LVL 2x12	20'-5 1/2"	2
F	Door header	LVL 2x12	20'	1
G	Door header	LVL 2x12	9'-9 1/4"	4



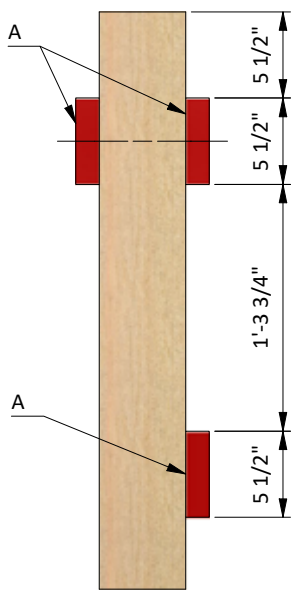
Left/right walls (1 : 60)



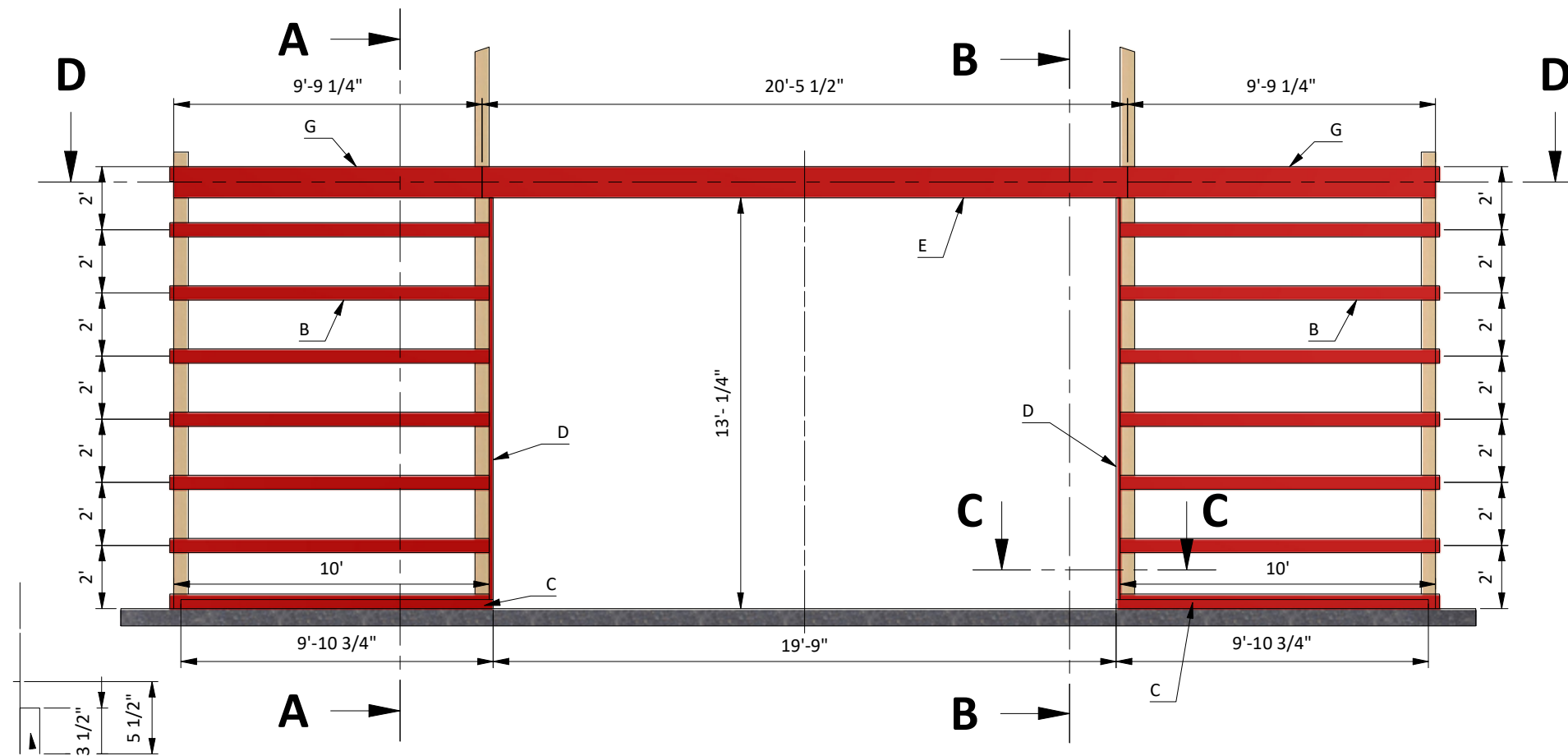
Back wall (1 : 60)



A-A (1 : 12)



STEP 3

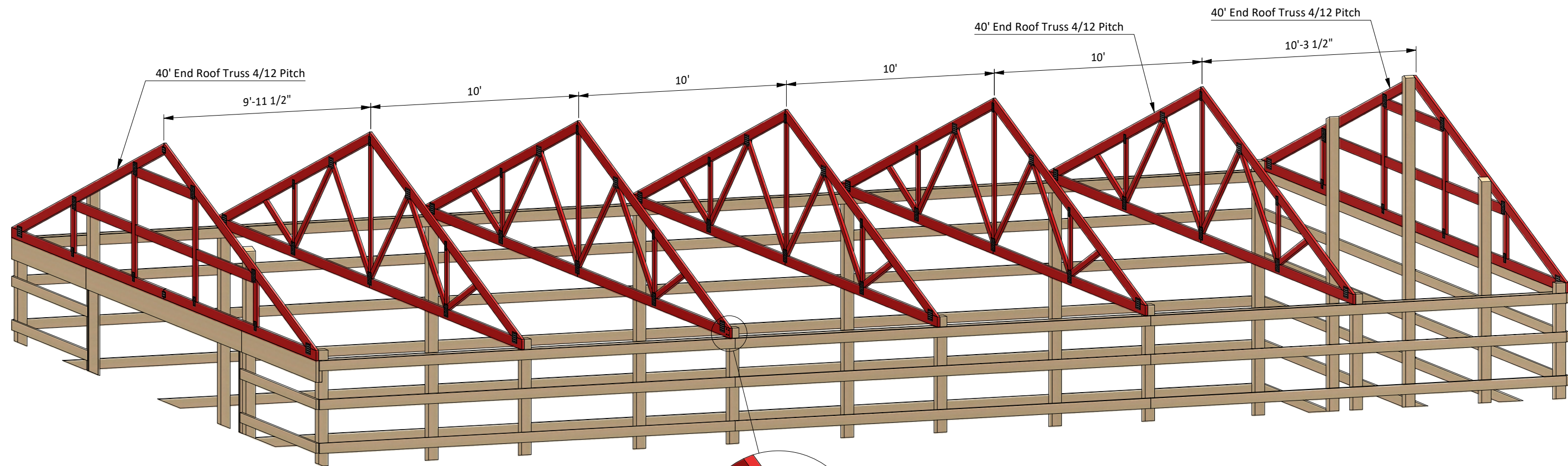


STEP 4

Assemble the Roof Frame

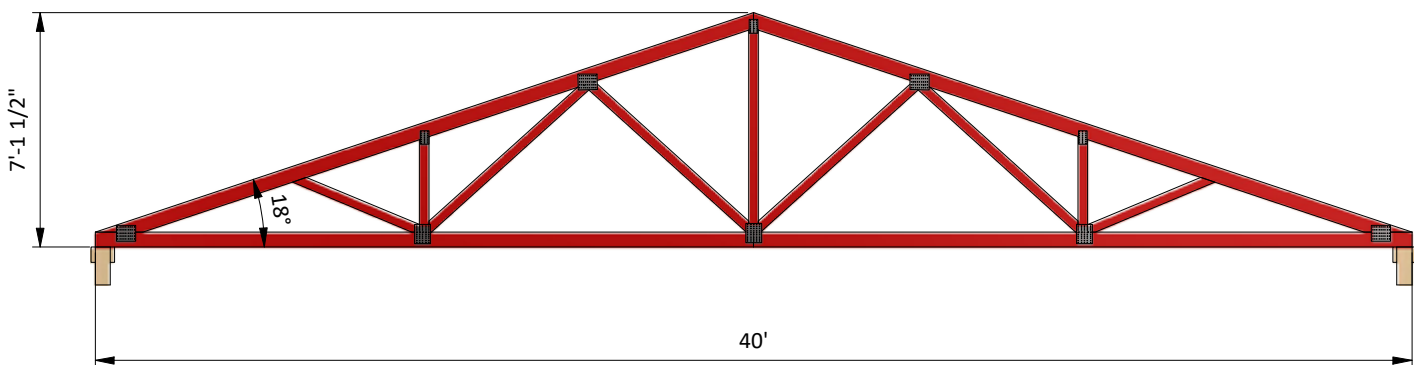
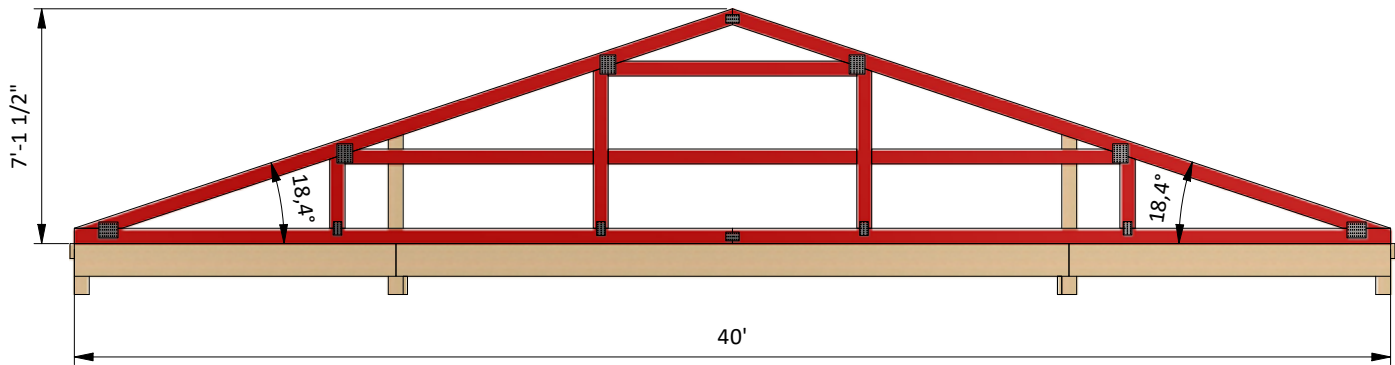
4.1 Lift onto the roof and install the trusses according to the diagram below. Connect them to the posts with #10 x 3" wood screws. If necessary use temporary joist for the fixation in vertical position.

Pos	Description	Material	Dimension	Qty
A	End Roof Truss 4/12 Pitch	-	40'	2
B	Inner Roof Truss 4/12 Pitch	-	40'	5



40' End Roof Truss 4/12 Pitch (1 : 70)

40' Inner Roof Truss 4/12 Pitch (1 : 70)



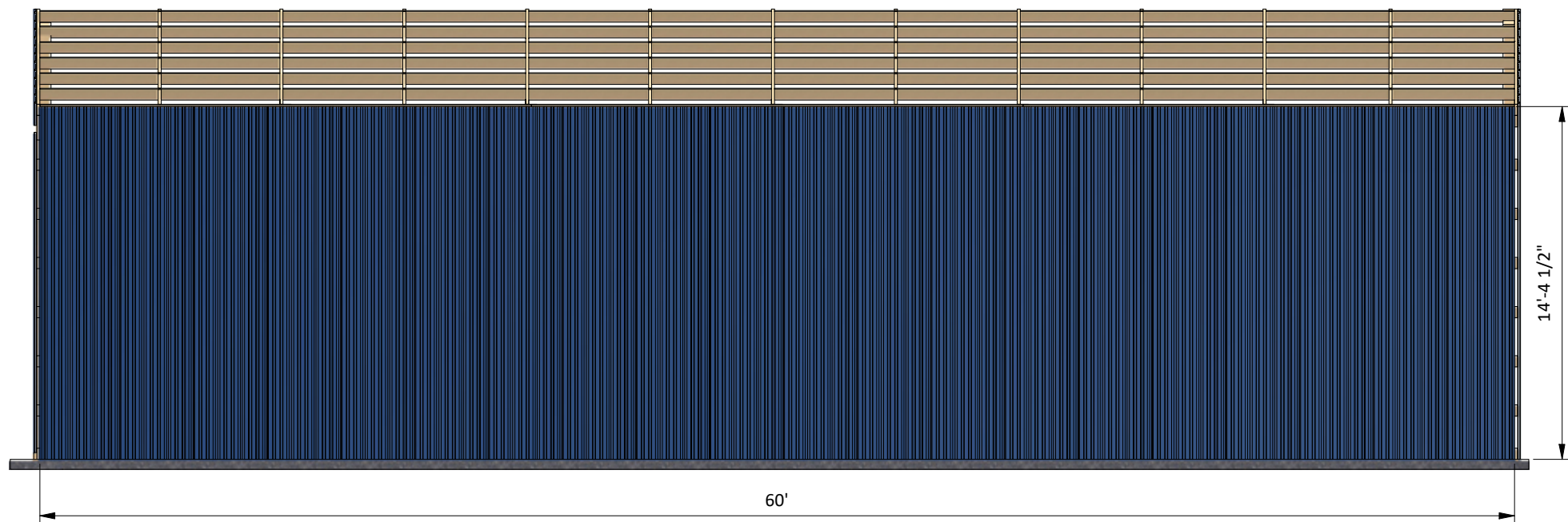
STEP 5

Wall Sheathing Installation

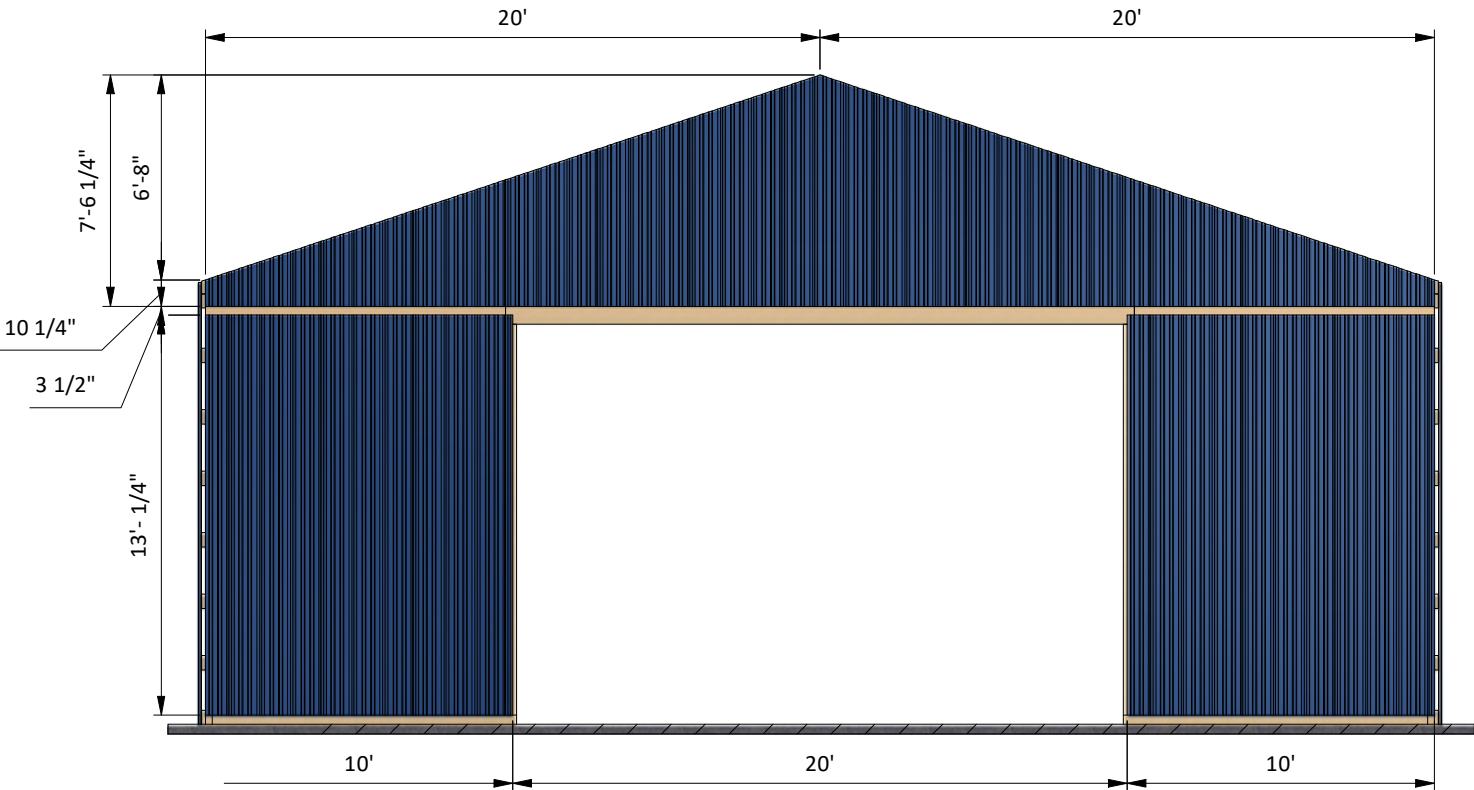
5.1 Install the corrugated metal wall panels to the wall frames, you will need 3000 square feet. Leave the free space on the front wall for the door hangers

5.2 Secure all elements with #9 x 1-1/2" and #9 x 2 1/2" screws.

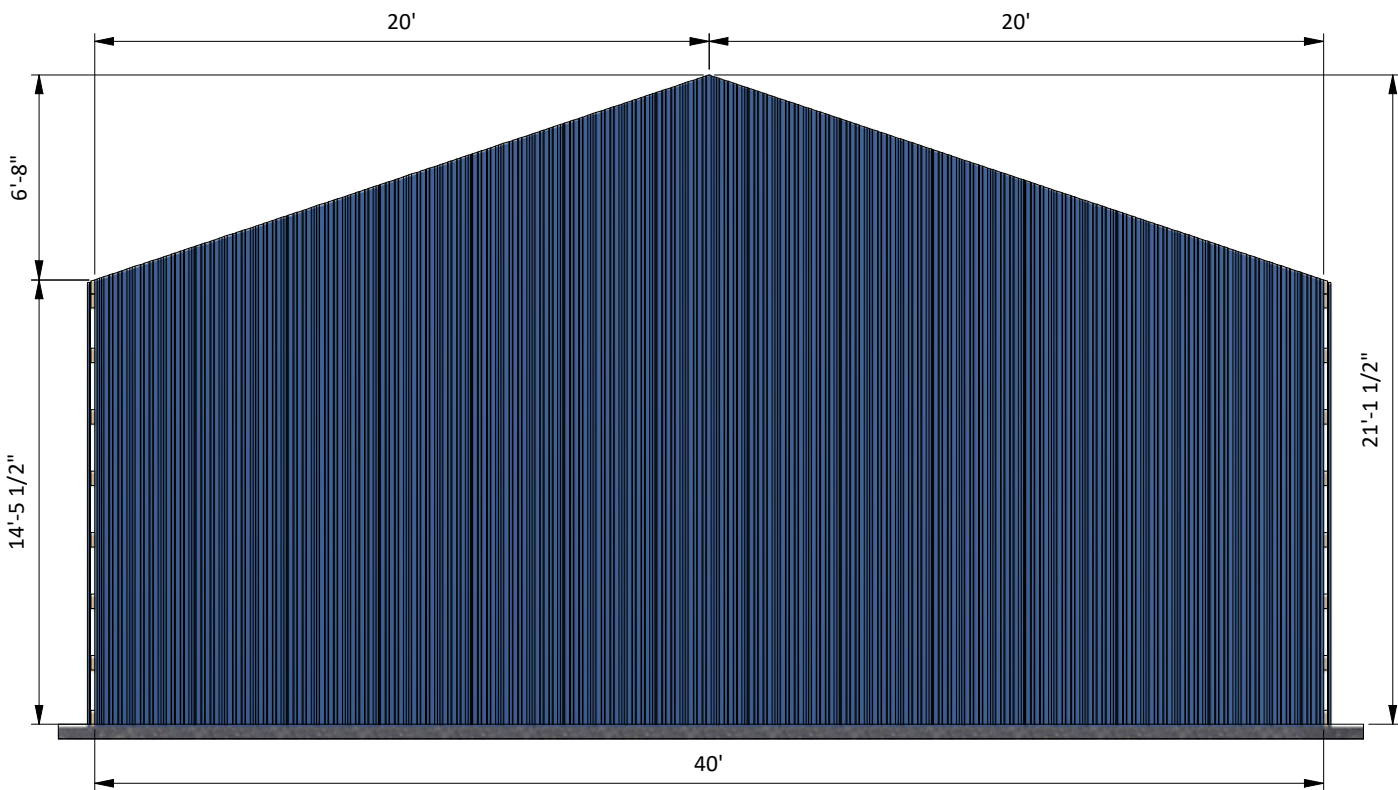
Side walls (1 : 75)



Front wall (1 : 75)



Back wall (1 : 75)



STEP 6

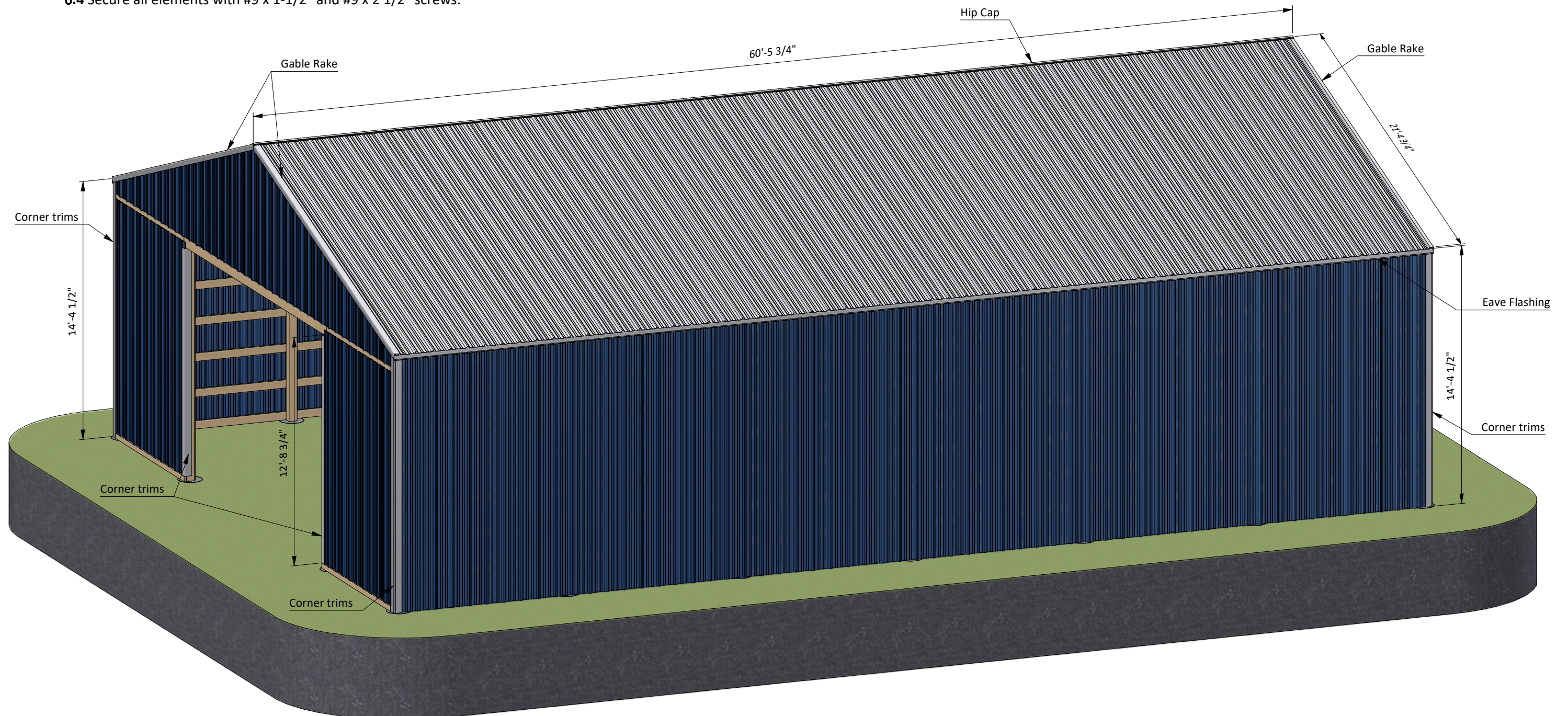
Roof Sheathing Installation

6.1 Assemble the corrugated metal roof panels, you will need 2600 square feet.

6.2 Fit the eaves flashing to cover the fascias. Install metal panels. Cover the side edges with gable raking. Finally, install the Hip Cap on the top ridge to finish the assembly. See the nodes below for installation details.

6.3 Finalize the installation process with trims for the corners and door opening.

6.4 Secure all elements with #9 x 1-1/2" and #9 x 2 1/2" screws.



STEP 7

Assemble and Install Barn Front Door

7.1 Build the door frame using 2x6 lumber. For each half door you will need three boards cut to 12'-11 1/4" that will be the vertical girts, three boards cut to 10' that will be the horizontal girts and four boards cut to 7'-2 3/4" that will be the cross braces.

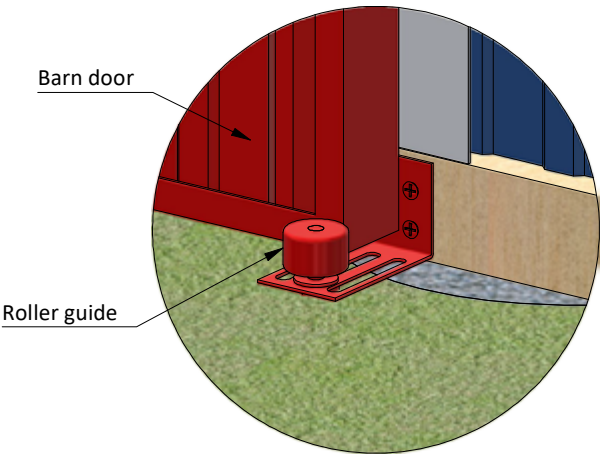
7.2 Assemble the corrugated metal roof panels, you will need 130 square feet. Cover the edges with metal trims.

7.3 Install the Round Rail on the front wall with the help of Rail Brackets. Drill the openings for the hangers in the top beams of the door frame and install three Hangers for each half door. Lift the doors and insert Hangers into Round rails.

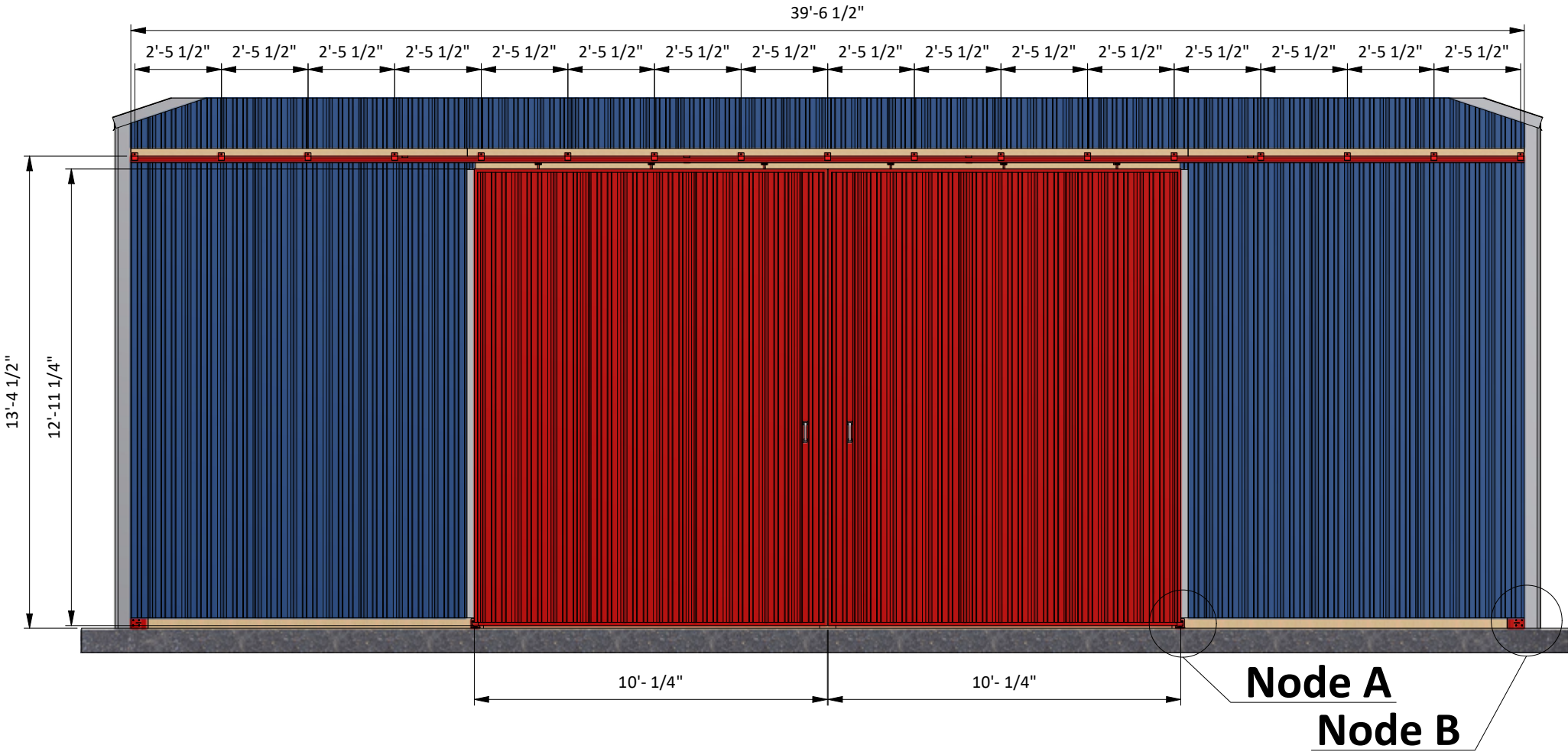
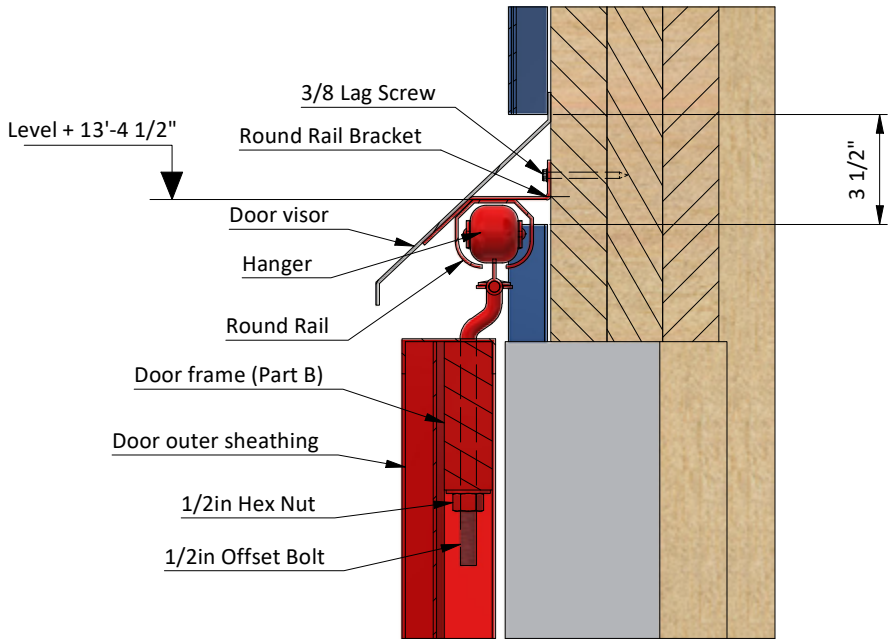
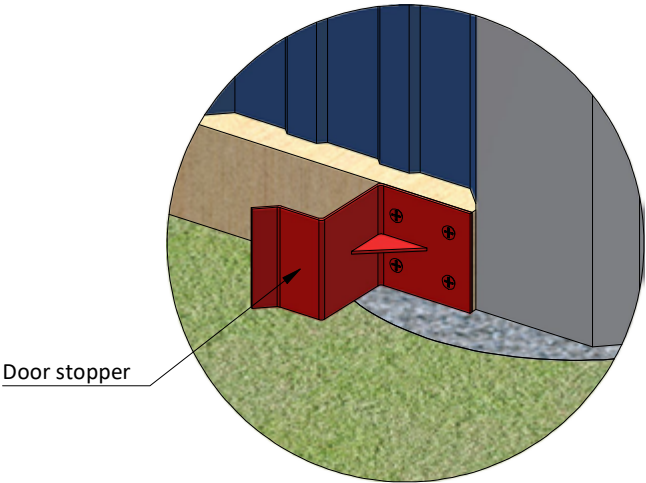
7.4 Finish the door installation by attaching door visor along the round rail, two 6" door pulls, two roller guides and two door stoppers .

Pos	Description	Material	Dimension	Qty
A	Girt	2x6	12'-11 1/4"	6
B	Girt	2x6	10'	6
C	Cross brace	2x6	7'-2 3/4"	8
D	Door sheathing	Corrugated metal panels	260 square ft	
E	Trim	Corner trims	100 ft	

Node A (1 : 6)



Node B (1 : 6)



STEP 8

Final Touches

Now that your pole barn is all done, you are ready to decorate it any way you want using your favorite paint, stain, or preservative.



Compare our Free vs. Premium plan

This perfectly designed plan will guide you through the entire process of building your very own shed for any backyard or garden.



Check out the benefits you would get with our **premium edition**:

Features	Free plan	Premium edition
Steps count	8	9
Illustrations for Each Step Print	✓	✓
Ready	✓	✓
Step By Step Instructions Full	✓	✓
Materials and Cuttings List	✗	✓
Additional Illustrations	✗	✓
Additional Blueprints	✗	✓
Tools List	✗	✓
Fastening Elements List Technical	✗	✓
Support	✗	✓

BUY NOW



For more great **HOW-TO** plans please visit: <https://shedplans.org>

Copyright

The text and illustrations that appear here are the exclusive property of shedplans.org and are protected by federal copyright laws. The duplication, sale or distribution of any portion of these plans without prior written consent from the original designer will be subject to the appropriate penalties for copyright infringement. Sharing this plan on the web is only permitted with an indicated original source: <https://shedplans.org>